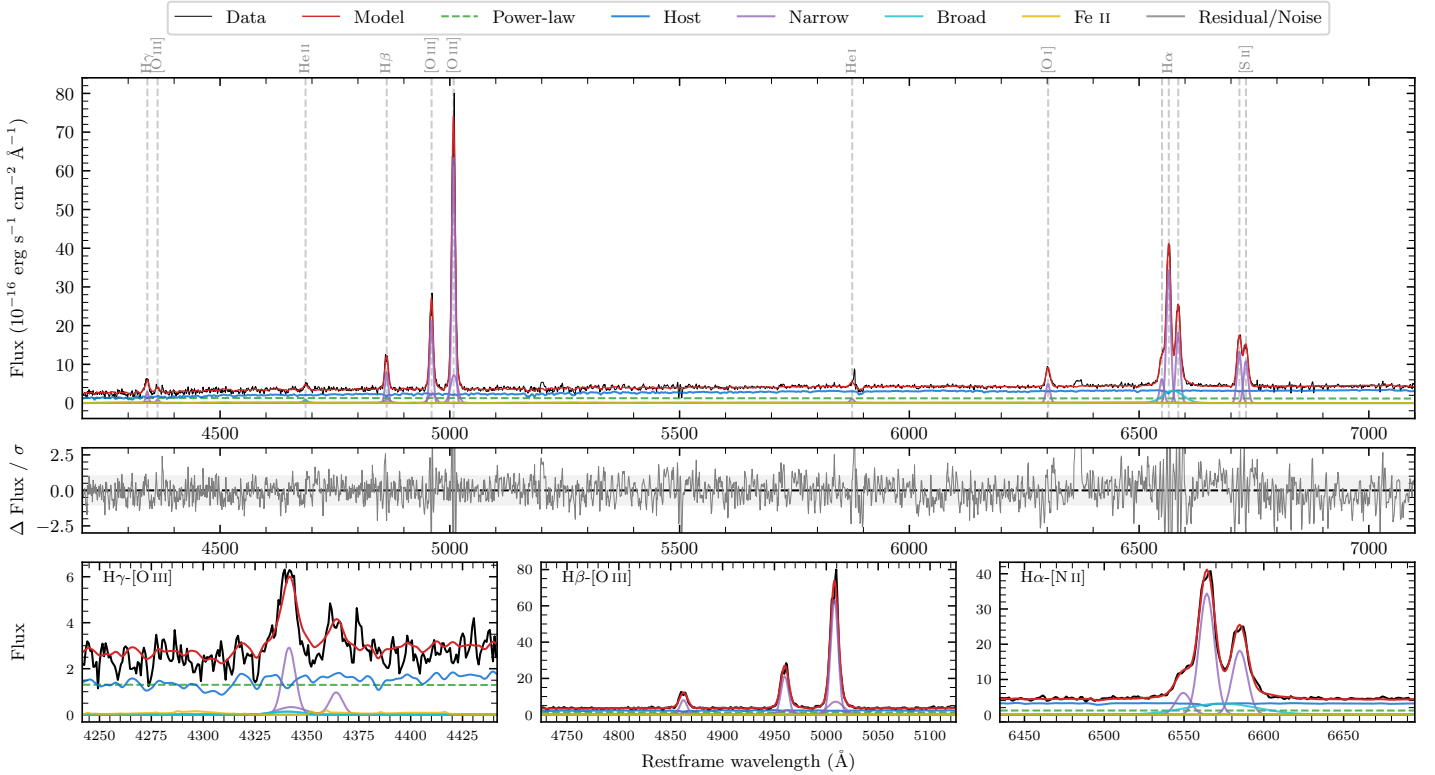
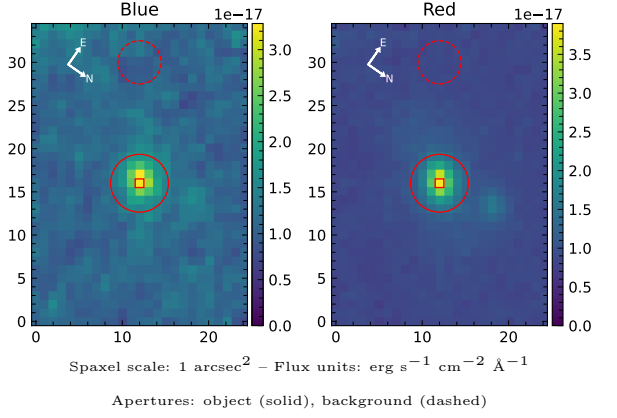


# LEDA 431158

Spectrum ID	503641452_sp1	Spectrum type	Sy 2
Alt name	g0140268-531939	Quality flag	good
$z$	0.0716	AGN reference	6dFGS
RA, Dec	25.1117, -53.3275	MW $E(B-V)$	0.024
MJD	60939.65	Power law $\alpha_\nu$	$-1.77 \pm 0.15$
SNR/ $\text{\AA}$ B/R	6.2/12.8	$\log L_{5100, \text{AGN}}$	$42.91 \pm 0.08$
Obs airmass	1.08	$\log H\beta_{\text{Br}}/[\text{O III}]$	—
SMSS ID	503641452	$\log M_{L5100}/M_\odot$	—
Neighbour	None $< 15''$	$\log M_{H\alpha}/M_\odot$	—
SMSS $\langle r_6''_{\text{ap}} \rangle$	$17.12 \pm 0.27$	$\log M_{H\beta}/M_\odot$	—
2MASS $K_{\text{ext}}$	$12.60 \pm 0.09$	$\log M_{[\text{O III}]} / M_\odot$	—



## Emission Line Measurements

Line	$\log L$ ( $\text{erg s}^{-1}$ )	FWHM ( $\text{km s}^{-1}$ )	$\sigma$ ( $\text{km s}^{-1}$ )	EW ( $\text{\AA}$ )
H $\gamma$ Narrow	$40.58 \pm 0.08$	$540 \pm 62$	$281 \pm 25$	$23.56 \pm 2.14$
<b>H<math>\gamma</math> Broad</b>	—	—	—	—
[O III] 4364	$40.01 \pm 0.19$	$511 \pm 62$	$217 \pm 25$	$6.35 \pm 1.52$
He II Narrow	$40.04 \pm 0.22$	$511 \pm 62$	$217 \pm 25$	$6.85 \pm 1.31$
<b>He II Broad</b>	<b><math>40.11 \pm 0.29</math></b>	<b><math>1178 \pm 62</math></b>	<b><math>500 \pm 25</math></b>	<b><math>8.13 \pm 2.13</math></b>
H $\beta$ Narrow	$41.07 \pm 0.02$	$540 \pm 62$	$281 \pm 25$	$74.51 \pm 1.88$
<b>H<math>\beta</math> Broad</b>	—	—	—	—
[O III] 5007	$41.98 \pm 0.01$	$540 \pm 62$	$281 \pm 25$	$608.18 \pm 2.32$
He I Narrow	$40.18 \pm 0.09$	$511 \pm 62$	$217 \pm 25$	$10.08 \pm 1.36$
<b>He I Broad</b>	<b><math>39.49 \pm 0.50</math></b>	<b><math>1445 \pm 63</math></b>	<b><math>613 \pm 25</math></b>	<b><math>2.03 \pm 1.81</math></b>
[O I] 6300	$40.88 \pm 0.02$	$511 \pm 62$	$217 \pm 25$	$50.62 \pm 1.06$
H $\alpha$ Narrow	$41.84 \pm 0.01$	$511 \pm 62$	$217 \pm 25$	$371.53 \pm 1.43$
<b>H<math>\alpha</math> Broad</b>	—	—	—	—
[N II] 6585	$41.57 \pm 0.01$	$511 \pm 62$	$217 \pm 25$	$197.07 \pm 1.36$
[S II] 6718	$41.34 \pm 0.01$	$511 \pm 62$	$217 \pm 25$	$147.42 \pm 1.23$
[S II] 6732	$41.25 \pm 0.01$	$511 \pm 62$	$217 \pm 25$	$120.30 \pm 1.23$

## Emission Summary

H $\alpha$ broad SNR	0.00
H $\beta$ broad SNR	0.00
H $\gamma$ broad SNR	0.00
AGN frac	0.37
Host frac	0.63
$\log L_{5100, \text{Host}}$	43.14
Fe II/H $\beta$	—
Fe II/[O III]	0.05

## Quality Flags

spurious_hab/hbb	1/0
15100	1
balmer	2
balmer_snr	2
hb_width	2
balmer_width	2