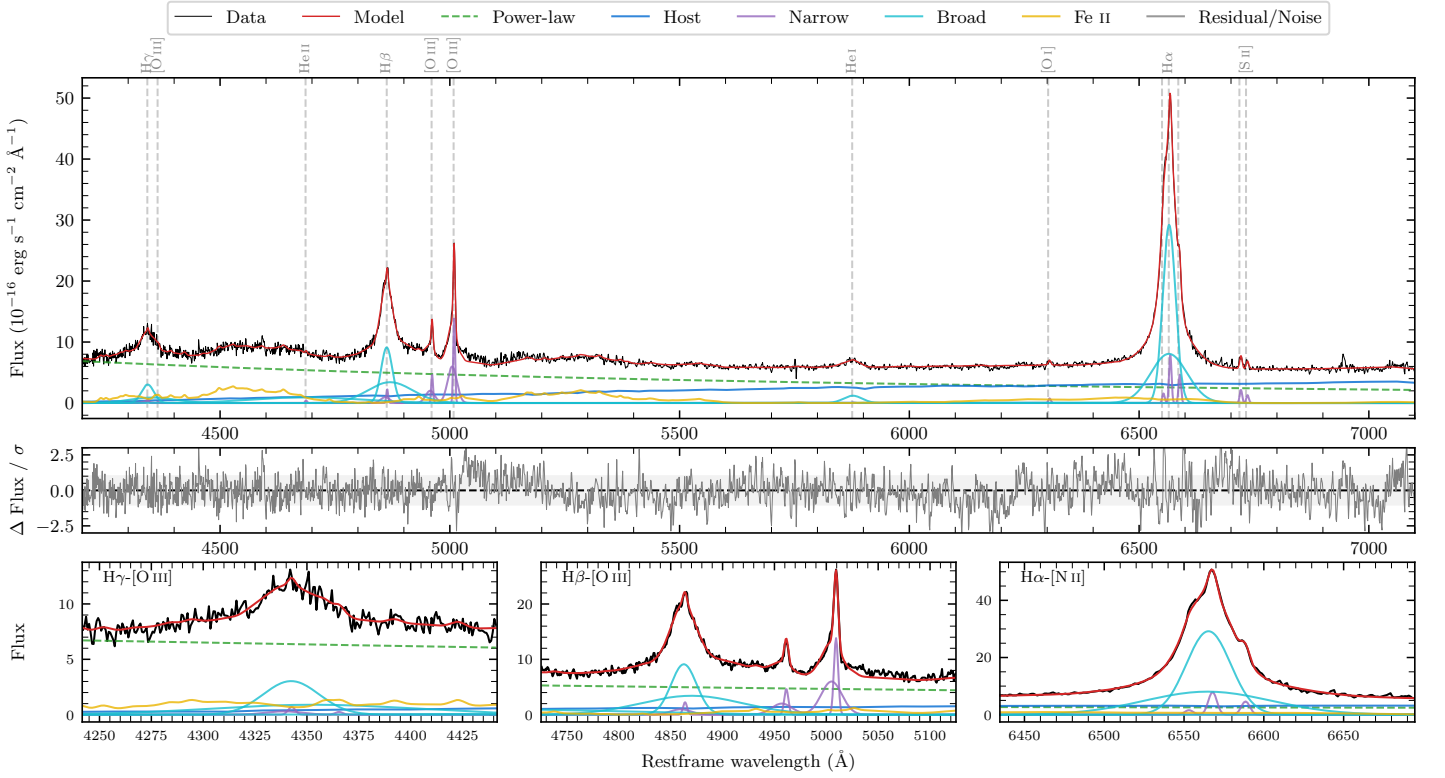
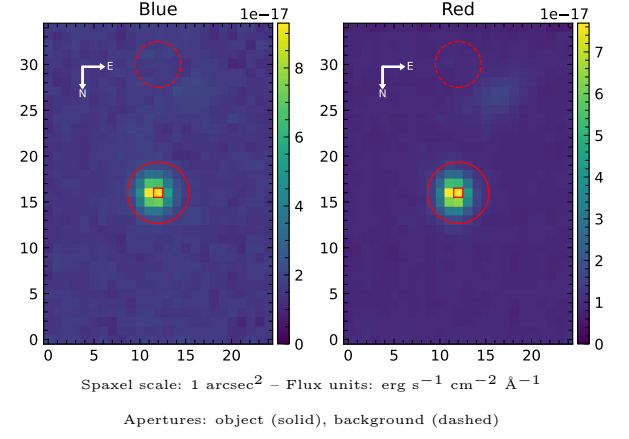


6dFGS gJ022219.4–533239

Spectrum ID	503580425_sp1	Spectrum type	Sy 1.2
Alt name	g0222194–533239	Quality flag	good
z	0.0957	AGN reference	6dFGS
RA, Dec	35.5810, –53.5442	MW $E(B - V)$	0.029
MJD	60165.76	Power law α_ν	0.21 ± 0.12
SNR/Å B/R	15.4/21.2	$\log L_{5100, \text{AGN}}$	43.72 ± 0.01
Obs airmass	1.10	$\log H\beta_{\text{Br}}/[\text{O III}]$	0.50 ± 0.01
SMSS ID	503580425	$\log M_{L5100}/M_\odot$	7.48 ± 0.02
Neighbour	11.8", 503580424	$\log M_{\text{H}\alpha}/M_\odot$	7.39 ± 0.04
SMSS $\langle r_6'' \text{ap} \rangle$	16.58 ± 0.12	$\log M_{\text{H}\beta}/M_\odot$	7.64 ± 0.02
2MASS K_{ext}	14.01 ± 0.25	$\log M_{[\text{O III}]} / M_\odot$	7.57 ± 0.02



Emission Line Measurements

Line	$\log L$ (erg s $^{-1}$)	FWHM (km s $^{-1}$)	σ (km s $^{-1}$)	EW (Å)
H γ Narrow	40.38 ± 0.27	372 ± 63	513 ± 25	1.65 ± 0.48
Hγ Broad	41.73 ± 0.03	2614 ± 149	1715 ± 99	36.97 ± 1.19
[O III] 4364	–	–	–	–
He II Narrow	39.72 ± 0.31	286 ± 63	121 ± 25	0.43 ± 0.22
He II Broad	41.84 ± 0.03	17660 ± 62	7500 ± 25	56.64 ± 2.41
H β Narrow	40.95 ± 0.10	372 ± 63	513 ± 25	7.76 ± 0.59
Hβ Broad	42.25 ± 0.01	2230 ± 55	1669 ± 33	155.24 ± 1.39
[O III] 5007	41.74 ± 0.01	372 ± 63	513 ± 25	52.02 ± 0.68
He I Narrow	39.18 ± 0.45	286 ± 63	121 ± 25	0.20 ± 0.20
He I Broad	41.18 ± 0.02	2430 ± 69	1032 ± 28	20.48 ± 0.69
[O I] 6300	40.09 ± 0.10	286 ± 63	121 ± 25	1.90 ± 0.27
H α Narrow	41.13 ± 0.02	286 ± 63	121 ± 25	22.82 ± 0.53
Hα Broad	42.66 ± 0.01	1739 ± 63	887 ± 25	781.63 ± 1.49
[N II] 6585	40.89 ± 0.02	286 ± 63	121 ± 25	13.43 ± 0.41
[S II] 6718	40.57 ± 0.04	286 ± 63	121 ± 25	6.63 ± 0.38
[S II] 6732	40.35 ± 0.05	286 ± 63	121 ± 25	4.06 ± 0.35

Emission Summary

H α broad SNR	71.52
H β broad SNR	23.99
H γ broad SNR	7.51
AGN frac	0.75
Host frac	0.25
$\log L_{5100, \text{Host}}$	43.24
Fe II/H β	0.79
Fe II/[O III]	2.50

Quality Flags

spurious_hab/hbb	0/0
15100	0
balmer	0
balmer_snr	0
hb_width	2
balmer_width	0