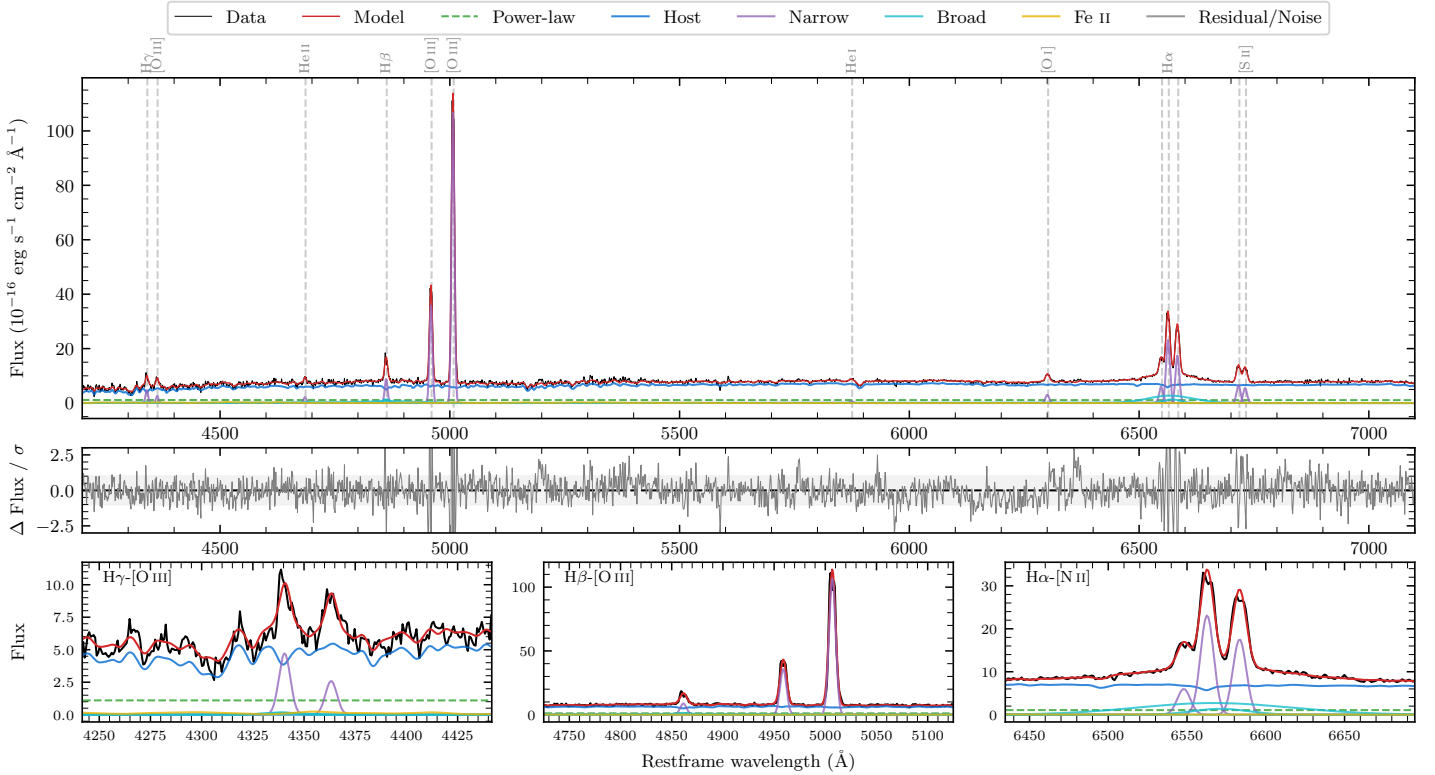
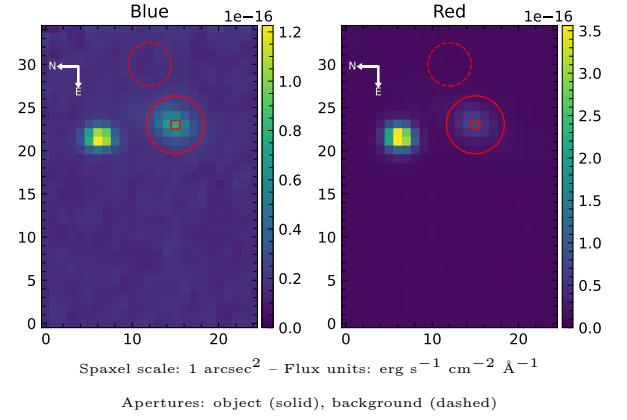


LEDA 994749

Spectrum ID	5035485_sp1	Spectrum type	Sy 1.8
Alt name	g2143549-090811	Quality flag	good
z	0.0552	AGN reference	6dFGS
RA, Dec	325.9787, -9.1363	MW $E(B - V)$	0.039
MJD	60524.59	Power law α_ν	-1.93 ± 0.09
SNR/ \AA B/R	9.6/20.5	$\log L_{5100, \text{AGN}}$	42.61 ± 0.12
Obs airmass	1.11	$\log H\beta_{\text{Br}}/[\text{O III}]$	-0.76 ± 0.05
SMSS ID	5035485	$\log M_{L5100}/M_\odot$	6.74 ± 0.14
Neighbour	8.5", 5035486	$\log M_{\text{H}\alpha}/M_\odot$	7.32 ± 0.07
SMSS $\langle r_6''_{\text{ap}} \rangle$	16.33 ± 0.08	$\log M_{\text{H}\beta}/M_\odot$	6.84 ± 0.13
2MASS K_{ext}	12.58 ± 0.09	$\log M_{[\text{O III}]} / M_\odot$	7.35 ± 0.13



Emission Line Measurements

Line	$\log L$ (erg s^{-1})	FWHM (km s^{-1})	σ (km s^{-1})	EW (\AA)
H γ Narrow	40.41 ± 0.07	452 ± 62	192 ± 25	31.54 ± 2.68
Hγ Broad	—	—	—	—
[O III] 4364	40.15 ± 0.10	453 ± 62	191 ± 25	17.38 ± 2.33
He II Narrow	40.10 ± 0.10	453 ± 62	191 ± 25	15.84 ± 2.58
He II Broad	40.33 ± 0.20	5049 ± 65	2144 ± 26	26.97 ± 6.49
H β Narrow	40.73 ± 0.04	452 ± 62	192 ± 25	66.43 ± 2.29
Hβ Broad	41.06 ± 0.05	1643 ± 232	3052 ± 135	143.49 ± 9.36
[O III] 5007	41.82 ± 0.01	452 ± 62	192 ± 25	829.84 ± 2.93
He I Narrow	39.66 ± 0.16	453 ± 62	191 ± 25	5.83 ± 1.11
He I Broad	39.21 ± 0.50	1239 ± 64	526 ± 26	2.06 ± 1.76
[O I] 6300	40.37 ± 0.03	453 ± 62	191 ± 25	29.85 ± 1.11
H α Narrow	41.27 ± 0.01	453 ± 62	191 ± 25	240.00 ± 1.68
Hα Broad	41.48 ± 0.01	3672 ± 270	1723 ± 34	389.50 ± 4.43
[N II] 6585	41.16 ± 0.01	453 ± 62	191 ± 25	182.80 ± 1.52
[S II] 6718	40.74 ± 0.01	453 ± 62	191 ± 25	69.58 ± 1.24
[S II] 6732	40.67 ± 0.02	453 ± 62	191 ± 25	59.30 ± 1.22

Emission Summary

H α broad SNR	5.35
H β broad SNR	2.70
H γ broad SNR	0.54
AGN frac	0.16
Host frac	0.84
$\log L_{5100, \text{Host}}$	43.34
Fe II/H β	0.37
Fe II/[O III]	0.06

Quality Flags

spurious_hab/hbb	0/0
15100	2
balmer	1
balmer_snr	2
hb_width	2
balmer_width	2