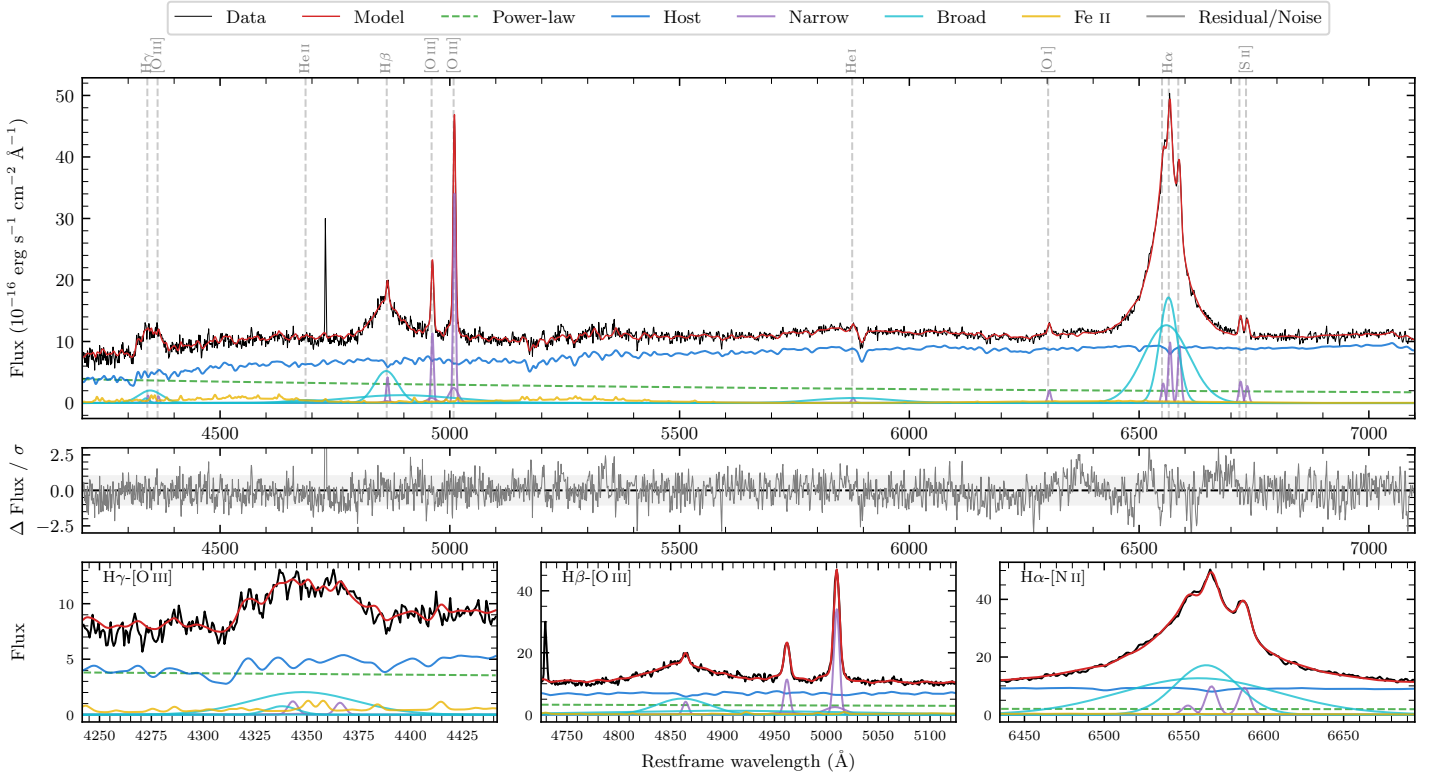
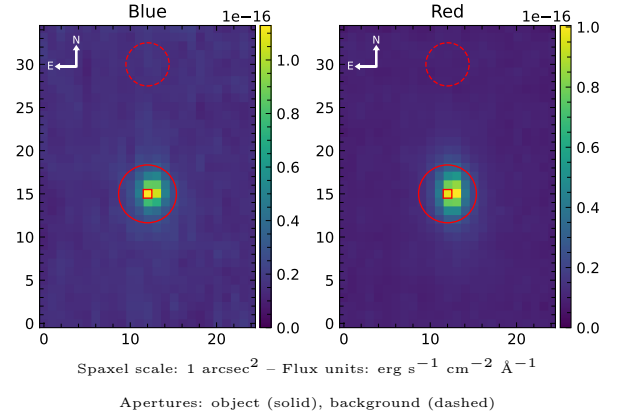


LEDA 433346

Spectrum ID	503301360_sp1	Spectrum type	Sy 1.2
Alt name	g0026407-530948	Quality flag	good
z	0.0628	AGN reference	6dFGS
RA, Dec	6.6694, -53.1633	MW $E(B - V)$	0.017
MJD	60165.75	Power law α_ν	-0.49 ± 0.29
SNR/ \AA B/R	12.6/24.4	$\log L_{5100, \text{AGN}}$	43.14 ± 0.05
Obs airmass	1.09	$\log H\beta_{\text{Br}}/[\text{O III}]$	0.38 ± 0.02
SMSS ID	503301360	$\log M_{L5100}/M_\odot$	7.80 ± 0.04
Neighbour	None $< 15''$	$\log M_{H\alpha}/M_\odot$	7.66 ± 0.03
SMSS $\langle r_6'' \text{ap} \rangle$	15.91 ± 0.10	$\log M_{H\beta}/M_\odot$	8.03 ± 0.03
2MASS K_{ext}	12.14 ± 0.07	$\log M_{[\text{O III}]} / M_\odot$	8.00 ± 0.03



Emission Line Measurements

Line	$\log L$ (erg s $^{-1}$)	FWHM (km s $^{-1}$)	σ (km s $^{-1}$)	EW (Angstrom)
H γ Narrow	39.96 ± 0.23	404 ± 63	310 ± 30	2.63 ± 1.18
Hγ Broad	41.16 ± 0.05	3320 ± 569	1417 ± 73	41.53 ± 2.21
[O III] 4364	39.81 ± 0.25	386 ± 63	164 ± 25	1.88 ± 0.64
He II Narrow	39.42 ± 0.39	386 ± 63	164 ± 25	0.86 ± 0.63
He II Broad	40.71 ± 0.12	6181 ± 129	2625 ± 54	16.64 ± 2.59
H β Narrow	40.55 ± 0.06	404 ± 63	311 ± 30	12.12 ± 1.28
Hβ Broad	41.86 ± 0.02	4268 ± 117	3555 ± 108	245.67 ± 6.06
[O III] 5007	41.47 ± 0.01	404 ± 63	311 ± 30	106.01 ± 1.45
He I Narrow	39.84 ± 0.13	386 ± 63	164 ± 25	3.16 ± 0.62
He I Broad	41.24 ± 0.04	10118 ± 183	4297 ± 77	79.10 ± 3.38
[O I] 6300	40.24 ± 0.05	386 ± 63	164 ± 25	8.80 ± 0.66
H α Narrow	40.95 ± 0.02	386 ± 63	164 ± 25	48.00 ± 1.09
Hα Broad	42.39 ± 0.01	2895 ± 69	1488 ± 25	1306.21 ± 3.18
[N II] 6585	40.93 ± 0.02	386 ± 63	164 ± 25	45.79 ± 0.99
[S II] 6718	40.51 ± 0.03	386 ± 63	164 ± 25	18.01 ± 0.76
[S II] 6732	40.41 ± 0.03	386 ± 63	164 ± 25	14.35 ± 0.77

Emission Summary

H α broad SNR	36.05
H β broad SNR	7.80
H γ broad SNR	3.27
AGN frac	0.29
Host frac	0.71
$\log L_{5100, \text{Host}}$	43.53
Fe II/H β	0.35
Fe II/[O III]	0.84

Quality Flags

spurious_hab/hbb	0/0
15100	1
balmer	0
balmer_snr	0
hb_width	2
balmer_width	0