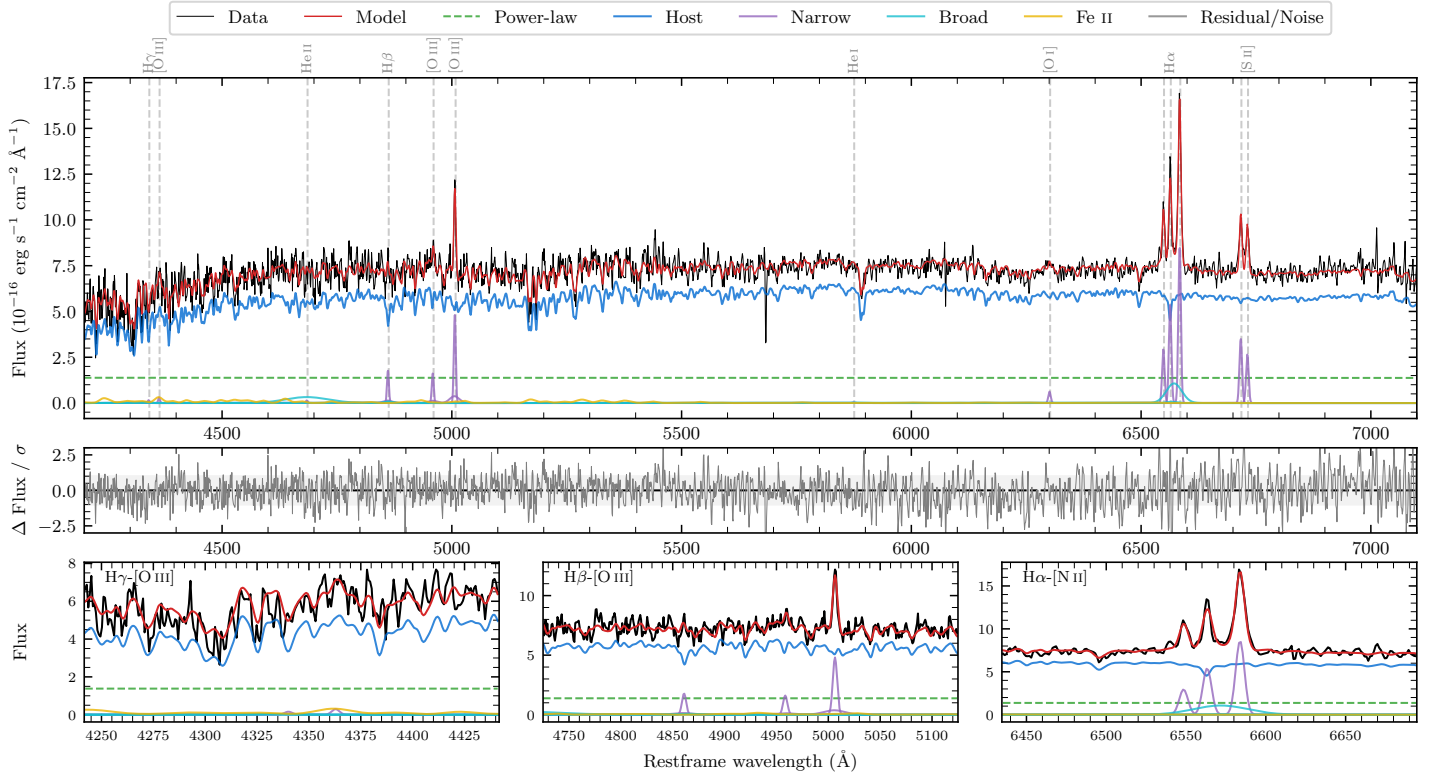
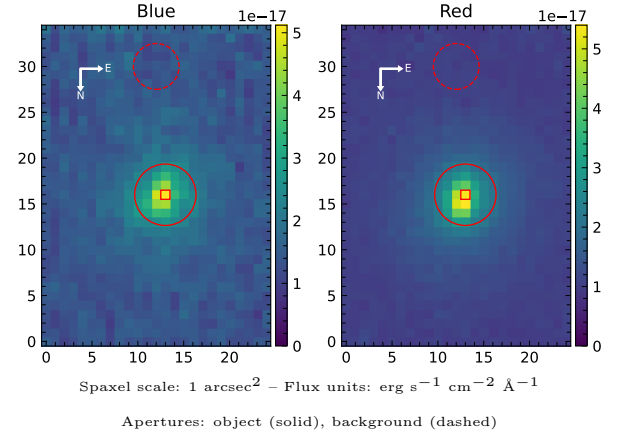


# LEDA 130513

Spectrum ID	501938471_sp1	Spectrum type	Sy 1.5+
Alt name	g0503164-470501	Quality flag	good
$z$	0.0376	AGN reference	6dFGS
RA, Dec	75.8181, -47.0837	MW $E(B - V)$	0.011
MJD	60949.75	Power law $\alpha_\nu$	$-1.99 \pm 0.01$
SNR/ $\text{\AA}$ B/R	12.2/24.9	$\log L_{5100, \text{AGN}}$	$42.37 \pm 0.03$
Obs airmass	1.04	$\log H\beta_{\text{Br}}/[\text{O III}]$	$< -0.24$
SMSS ID	501938471	$\log M_{L5100}/M_\odot$	—
Neighbour	None $< 15''$	$\log M_{\text{H}\alpha}/M_\odot$	$5.93 \pm 0.08$
SMSS $\langle r_6''_{\text{ap}} \rangle$	$16.49 \pm 0.05$	$\log M_{\text{H}\beta}/M_\odot$	—
2MASS $K_{\text{ext}}$	$12.10 \pm 0.12$	$\log M_{[\text{O III}]} / M_\odot$	—



## Emission Line Measurements

Line	$\log L$ (erg s <sup>-1</sup> )	FWHM (km s <sup>-1</sup> )	$\sigma$ (km s <sup>-1</sup> )	EW (Å)
H $\gamma$ Narrow	—	—	—	—
<b>H<math>\gamma</math> Broad</b>	—	—	—	—
[O III] 4364	—	—	—	—
He II Narrow	—	—	—	—
<b>He II Broad</b>	<b><math>40.12 \pm 0.12</math></b>	<b><math>7008 \pm 62</math></b>	<b><math>2976 \pm 25</math></b>	<b><math>28.57 \pm 4.55</math></b>
H $\beta$ Narrow	$39.63 \pm 0.11$	$311 \pm 63$	$331 \pm 63$	$9.37 \pm 1.80$
<b>H<math>\beta</math> Broad</b>	$< 39.84$	—	—	—
[O III] 5007	$40.08 \pm 0.05$	$311 \pm 63$	$331 \pm 63$	$26.06 \pm 1.83$
He I Narrow	—	—	—	—
<b>He I Broad</b>	—	—	—	—
[O I] 6300	$39.15 \pm 0.13$	$300 \pm 62$	$125 \pm 25$	$3.10 \pm 0.55$
H $\alpha$ Narrow	$40.11 \pm 0.02$	$300 \pm 62$	$125 \pm 25$	$28.08 \pm 0.55$
<b>H<math>\alpha</math> Broad</b>	<b><math>40.23 \pm 0.04</math></b>	<b><math>1789 \pm 70</math></b>	<b><math>658 \pm 25</math></b>	<b><math>35.83 \pm 1.47</math></b>
[N II] 6585	$40.31 \pm 0.01$	$300 \pm 62$	$125 \pm 25$	$44.88 \pm 0.68$
[S II] 6718	$39.93 \pm 0.02$	$300 \pm 62$	$125 \pm 25$	$18.73 \pm 0.60$
[S II] 6732	$39.81 \pm 0.03$	$300 \pm 62$	$125 \pm 25$	$14.12 \pm 0.57$

## Emission Summary

H $\alpha$ broad SNR	2.02
H $\beta$ broad SNR	0.38
H $\gamma$ broad SNR	0.00
AGN frac	0.21
Host frac	0.79
$\log L_{5100, \text{Host}}$	42.95
Fe II/H $\beta$	—
Fe II/[O III]	1.08

## Quality Flags

spurious_hab/hbb	0/0
15100	1
balmer	2
balmer_snr	2
hb_width	2
balmer_width	2