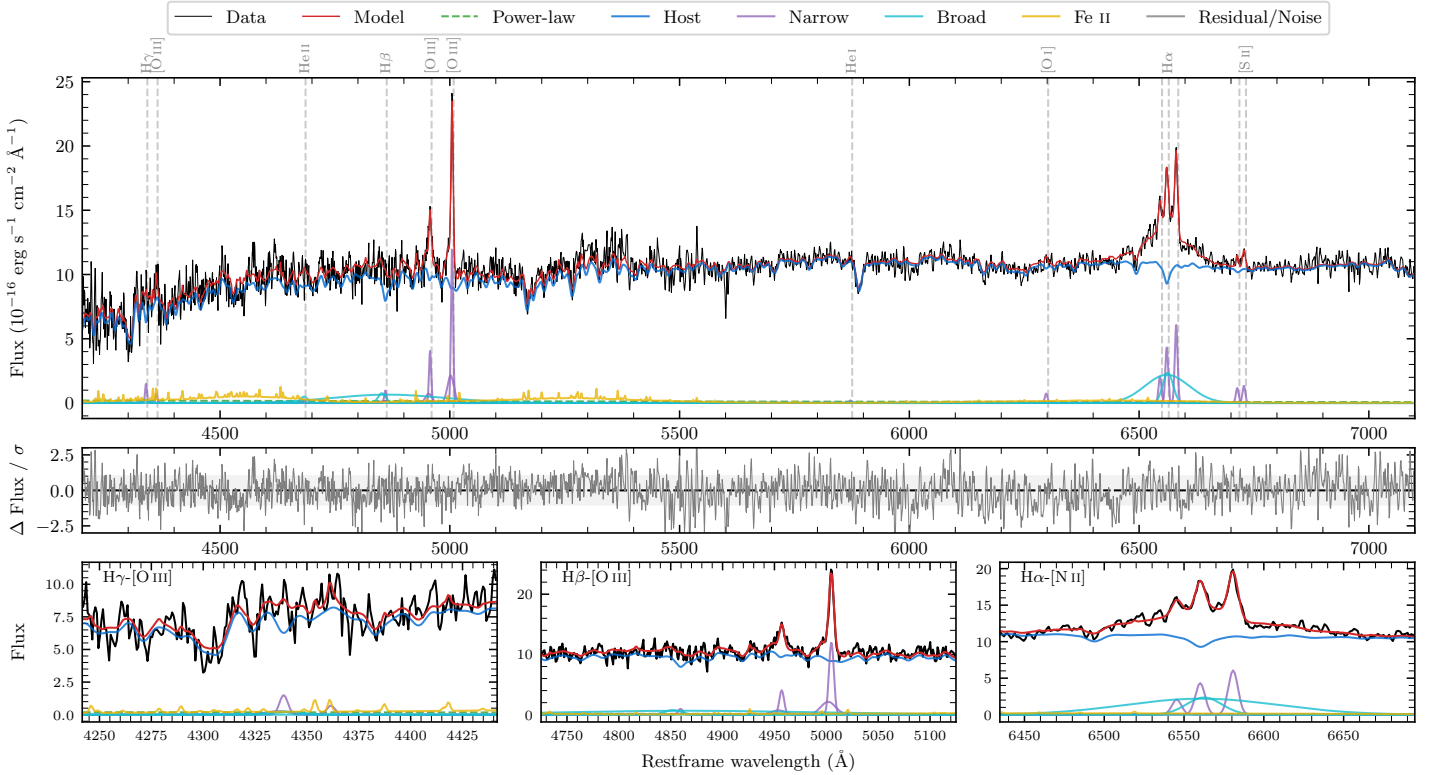
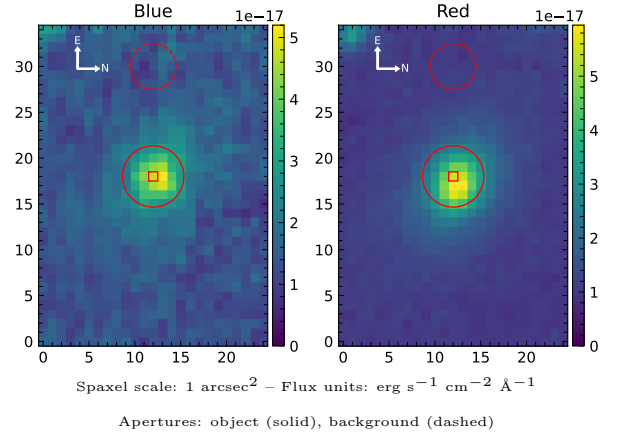


LEDA 147940

Spectrum ID	501441138_sp1	Spectrum type	Sy 1.8+
Alt name	g0546393-452030	Quality flag	good
z	0.0516	AGN reference	6dFGS
RA, Dec	86.6638, -45.3416	MW $E(B - V)$	0.044
MJD	60966.74	Power law α_ν	-0.11 ± 0.57
SNR/ \AA B/R	11.4/24.6	$\log L_{5100, \text{AGN}}$	41.63 ± 0.50
Obs airmass	1.03	$\log H\beta_{\text{Br}}/[\text{O III}]$	< -0.49
SMSS ID	501441138	$\log M_{L5100}/M_\odot$	—
Neighbour	None $< 15''$	$\log M_{\text{H}\alpha}/M_\odot$	6.73 ± 0.08
SMSS $\langle r_6''_{\text{ap}} \rangle$	15.76 ± 0.14	$\log M_{\text{H}\beta}/M_\odot$	—
2MASS K_{ext}	11.64 ± 0.07	$\log M_{[\text{O III}]} / M_\odot$	—



Emission Line Measurements

Line	$\log L$ (erg s^{-1})	FWHM (km s^{-1})	σ (km s^{-1})	EW (\AA)
H γ Narrow	39.90 ± 0.23	364 ± 63	290 ± 30	67.96 ± 23.17
Hγ Broad	—	—	—	—
[O III] 4364	39.38 ± 0.40	327 ± 63	139 ± 25	20.75 ± 13.33
He II Narrow	—	—	—	—
He II Broad	—	—	—	—
H β Narrow	39.76 ± 0.26	364 ± 63	290 ± 30	61.27 ± 23.22
Hβ Broad	< 40.38	—	—	—
[O III] 5007	40.87 ± 0.02	364 ± 63	290 ± 30	826.73 ± 25.78
He I Narrow	38.97 ± 0.43	327 ± 63	139 ± 25	14.24 ± 10.95
He I Broad	—	—	—	—
[O I] 6300	39.57 ± 0.15	327 ± 63	139 ± 25	63.73 ± 12.58
H α Narrow	40.35 ± 0.05	327 ± 63	139 ± 25	418.83 ± 18.19
Hα Broad	41.35 ± 0.02	2046 ± 169	1561 ± 29	4199.07 ± 64.51
[N II] 6585	40.50 ± 0.02	327 ± 63	139 ± 25	593.69 ± 17.30
[S II] 6718	39.79 ± 0.09	327 ± 63	139 ± 25	121.73 ± 15.21
[S II] 6732	39.85 ± 0.08	327 ± 63	139 ± 25	140.35 ± 15.25

Emission Summary

H α broad SNR	5.32
H β broad SNR	0.89
H γ broad SNR	0.00
AGN frac	0.01
Host frac	0.99
$\log L_{5100, \text{Host}}$	43.49
Fe II/H β	—
Fe II/[O III]	—

Quality Flags

spurious_hab/hbb	0/2
15100	2
balmer	2
balmer_snr	2
hb_width	2
balmer_width	2