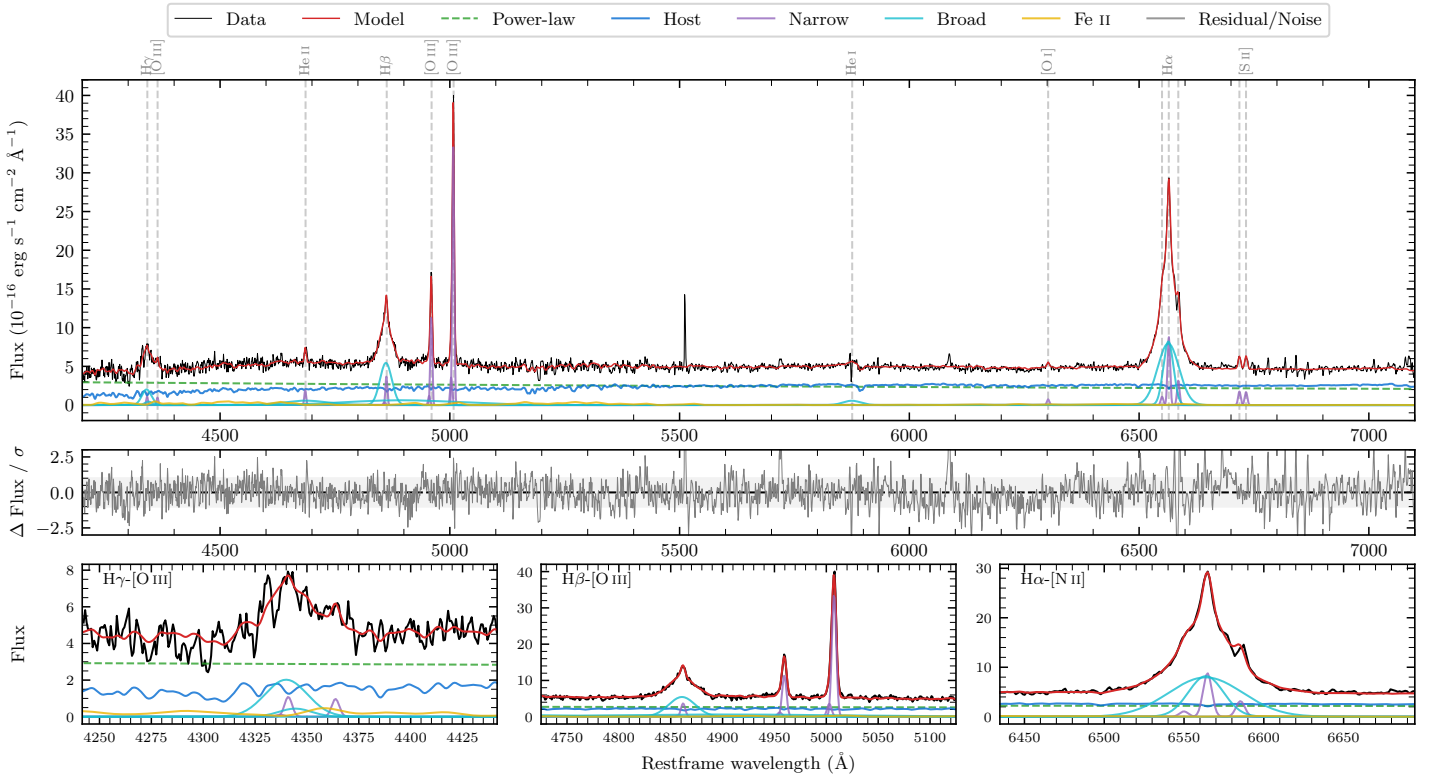
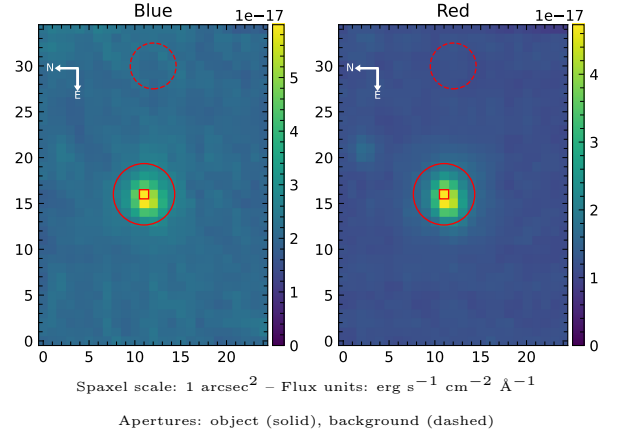


# LEDA 397822

Spectrum ID	499868516_sp1	Spectrum type	Sy 1.5
Alt name	g0315213-564250	Quality flag	good
$z$	0.0730	AGN reference	6dFGS
RA, Dec	48.8388, -56.7140	MW $E(B-V)$	0.017
MJD	60164.78	Power law $\alpha_\nu$	$-1.34 \pm 0.27$
SNR/ $\text{\AA}$ B/R	10.0/17.1	$\log L_{5100, \text{AGN}}$	$43.24 \pm 0.03$
Obs airmass	1.15	$\log H\beta_{\text{Br}}/[\text{O III}]$	$-0.05 \pm 0.17$
SMSS ID	499868516	$\log M_{L5100}/M_\odot$	$7.12 \pm 0.03$
Neighbour	9.9", 499868524	$\log M_{H\alpha}/M_\odot$	$6.93 \pm 0.04$
SMSS $\langle r_{6'' \text{ap}} \rangle$	$16.45 \pm 0.08$	$\log M_{H\beta}/M_\odot$	$7.10 \pm 0.09$
2MASS $K_{\text{ext}}$	$13.17 \pm 0.13$	$\log M_{[\text{O III}]} / M_\odot$	$7.27 \pm 0.02$



## Emission Line Measurements

Line	$\log L$ (erg s $^{-1}$ )	FWHM (km s $^{-1}$ )	$\sigma$ (km s $^{-1}$ )	EW (Å)
H $\gamma$ Narrow	$39.89 \pm 0.23$	$316 \pm 63$	$150 \pm 25$	$2.05 \pm 1.09$
<b>H<math>\gamma</math> Broad</b>	<b><math>40.93 \pm 0.05</math></b>	<b><math>1614 \pm 106</math></b>	<b><math>590 \pm 34</math></b>	<b><math>22.53 \pm 1.68</math></b>
[O III] 4364	$39.80 \pm 0.19$	$299 \pm 63$	$126 \pm 25$	$1.68 \pm 0.46$
He II Narrow	$40.13 \pm 0.07$	$299 \pm 63$	$126 \pm 25$	$3.73 \pm 0.40$
<b>He II Broad</b>	—	—	—	—
H $\beta$ Narrow	$40.47 \pm 0.05$	$316 \pm 63$	$150 \pm 25$	$8.40 \pm 0.53$
<b>H<math>\beta</math> Broad</b>	<b><math>41.39^{+0.32}_{-0.02}</math></b>	<b><math>1870 \pm 43</math></b>	<b><math>674 \pm 25</math></b>	<b><math>70.53 \pm 1.18</math></b>
[O III] 5007	$41.45 \pm 0.01$	$316 \pm 63$	$150 \pm 25$	$80.93 \pm 0.57$
He I Narrow	—	—	—	—
<b>He I Broad</b>	<b><math>40.58 \pm 0.06</math></b>	<b><math>2273 \pm 80</math></b>	<b><math>965 \pm 33</math></b>	<b><math>12.06 \pm 1.06</math></b>
[O I] 6300	$39.84 \pm 0.09$	$299 \pm 63$	$126 \pm 25$	$2.35 \pm 0.30$
H $\alpha$ Narrow	$40.93 \pm 0.02$	$299 \pm 63$	$126 \pm 25$	$29.86 \pm 0.48$
<b>H<math>\alpha</math> Broad</b>	<b><math>41.99 \pm 0.01</math></b>	<b><math>1638 \pm 66</math></b>	<b><math>732 \pm 25</math></b>	<b><math>337.31 \pm 1.14</math></b>
[N II] 6585	$40.49 \pm 0.03$	$299 \pm 63$	$126 \pm 25$	$10.79 \pm 0.44$
[S II] 6718	$40.24 \pm 0.04$	$299 \pm 63$	$126 \pm 25$	$6.18 \pm 0.35$
[S II] 6732	$40.23 \pm 0.04$	$299 \pm 63$	$126 \pm 25$	$5.95 \pm 0.34$

## Emission Summary

H $\alpha$ broad SNR	31.22
H $\beta$ broad SNR	10.53
H $\gamma$ broad SNR	4.79
AGN frac	0.56
Host frac	0.44
$\log L_{5100, \text{Host}}$	43.13
Fe II/H $\beta$	—
Fe II/[O III]	—

## Quality Flags

spurious_hab/hbb	0/1
15100	0
balmer	0
balmer_snr	0
hb_width	0
balmer_width	0