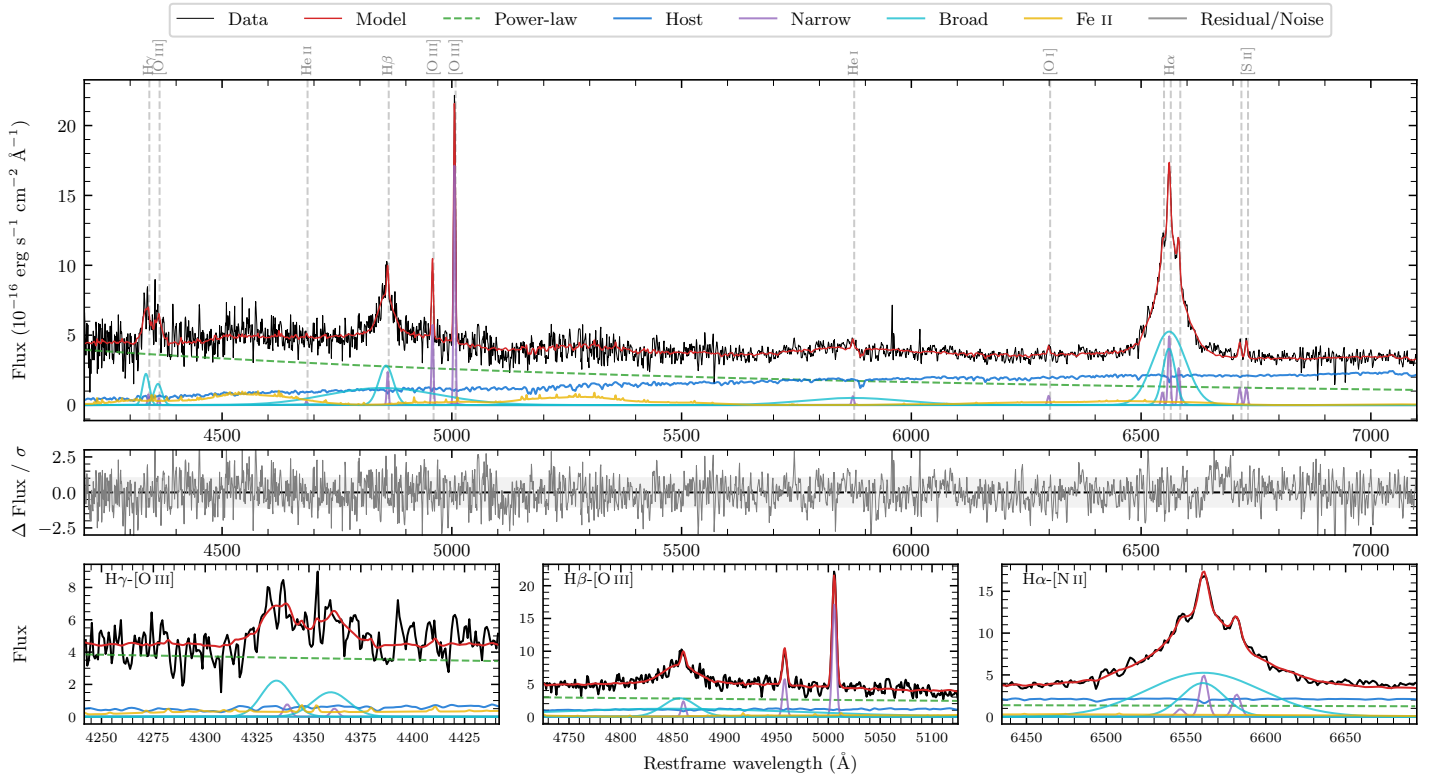
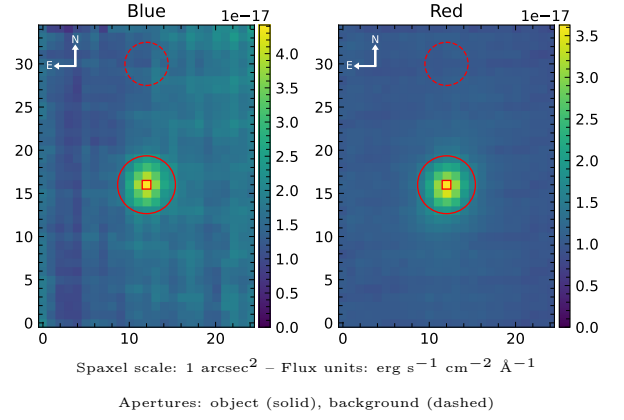


# FRL 296

Spectrum ID	499699954_sp1	Spectrum type	Sy 1.5
Alt name	g0225090-631326	Quality flag	good
$z$	0.0569	AGN reference	6dFGS
RA, Dec	36.2876, -63.2240	MW $E(B - V)$	0.020
MJD	60170.79	Power law $\alpha_\nu$	$0.47 \pm 0.03$
SNR/ $\text{\AA}$ B/R	7.6/10.8	$\log L_{5100, \text{AGN}}$	$42.99 \pm 0.01$
Obs airmass	1.18	$\log H\beta_{\text{Br}}/[\text{O III}]$	$0.11 \pm 0.33$
SMSS ID	499699954	$\log M_{L5100}/M_\odot$	$7.20 \pm 0.03$
Neighbour	None $< 15''$	$\log M_{H\alpha}/M_\odot$	$7.09 \pm 0.03$
SMSS $\langle r_6'' \text{ap} \rangle$	$15.41 \pm 0.21$	$\log M_{H\beta}/M_\odot$	$7.10 \pm 0.17$
2MASS $K_{\text{ext}}$	$11.65 \pm 0.08$	$\log M_{[\text{O III}]} / M_\odot$	$7.18 \pm 0.04$



## Emission Line Measurements

Line	$\log L$ ( $\text{erg s}^{-1}$ )	FWHM ( $\text{km s}^{-1}$ )	$\sigma$ ( $\text{km s}^{-1}$ )	EW ( $\text{\AA}$ )
H $\gamma$ Narrow	$39.46 \pm 0.31$	$283 \pm 63$	$151 \pm 36$	$1.00 \pm 0.90$
<b>H<math>\gamma</math> Broad</b>	<b><math>40.78 \pm 0.05</math></b>	—	<b><math>1012 \pm 32</math></b>	<b><math>21.41 \pm 1.15</math></b>
[O III] 4364	$39.26 \pm 0.39$	$282 \pm 63$	$119 \pm 25$	$0.64 \pm 0.39$
He II Narrow	$39.02 \pm 0.42$	$282 \pm 63$	$119 \pm 25$	$0.45 \pm 0.41$
<b>He II Broad</b>	—	—	—	—
H $\beta$ Narrow	$39.99 \pm 0.08$	$283 \pm 63$	$152 \pm 36$	$4.51 \pm 0.89$
<b>H<math>\beta</math> Broad</b>	<b><math>40.97^{+0.63}_{-0.03}</math></b>	<b><math>2324 \pm 39</math></b>	<b><math>836 \pm 25</math></b>	<b><math>43.37 \pm 1.33</math></b>
[O III] 5007	$40.86 \pm 0.01$	$283 \pm 63$	$152 \pm 36$	$36.31 \pm 1.04$
He I Narrow	$39.49 \pm 0.15$	$282 \pm 63$	$119 \pm 25$	$2.29 \pm 0.48$
<b>He I Broad</b>	<b><math>41.06 \pm 0.04</math></b>	<b><math>13066 \pm 72</math></b>	<b><math>5549 \pm 29</math></b>	<b><math>85.19 \pm 3.82</math></b>
[O I] 6300	$39.54 \pm 0.13$	$282 \pm 63$	$119 \pm 25$	$3.03 \pm 0.54$
H $\alpha$ Narrow	$40.43 \pm 0.03$	$282 \pm 63$	$119 \pm 25$	$26.04 \pm 0.84$
<b>H<math>\alpha</math> Broad</b>	<b><math>41.70 \pm 0.01</math></b>	<b><math>2412 \pm 88</math></b>	<b><math>1192 \pm 25</math></b>	<b><math>490.86 \pm 2.73</math></b>
[N II] 6585	$40.16 \pm 0.04$	$282 \pm 63$	$119 \pm 25$	$14.09 \pm 0.75$
[S II] 6718	$39.83 \pm 0.07$	$282 \pm 63$	$119 \pm 25$	$6.91 \pm 0.67$
[S II] 6732	$39.83 \pm 0.07$	$282 \pm 63$	$119 \pm 25$	$7.06 \pm 0.68$

## Emission Summary

H $\alpha$ broad SNR	15.54
H $\beta$ broad SNR	4.73
H $\gamma$ broad SNR	3.77
AGN frac	0.67
Host frac	0.33
$\log L_{5100, \text{Host}}$	42.68
Fe II/H $\beta$	—
Fe II/[O III]	—

## Quality Flags

spurious_hab/hbb	0/2
15100	2
balmer	0
balmer_snr	0
hb_width	0
balmer_width	1