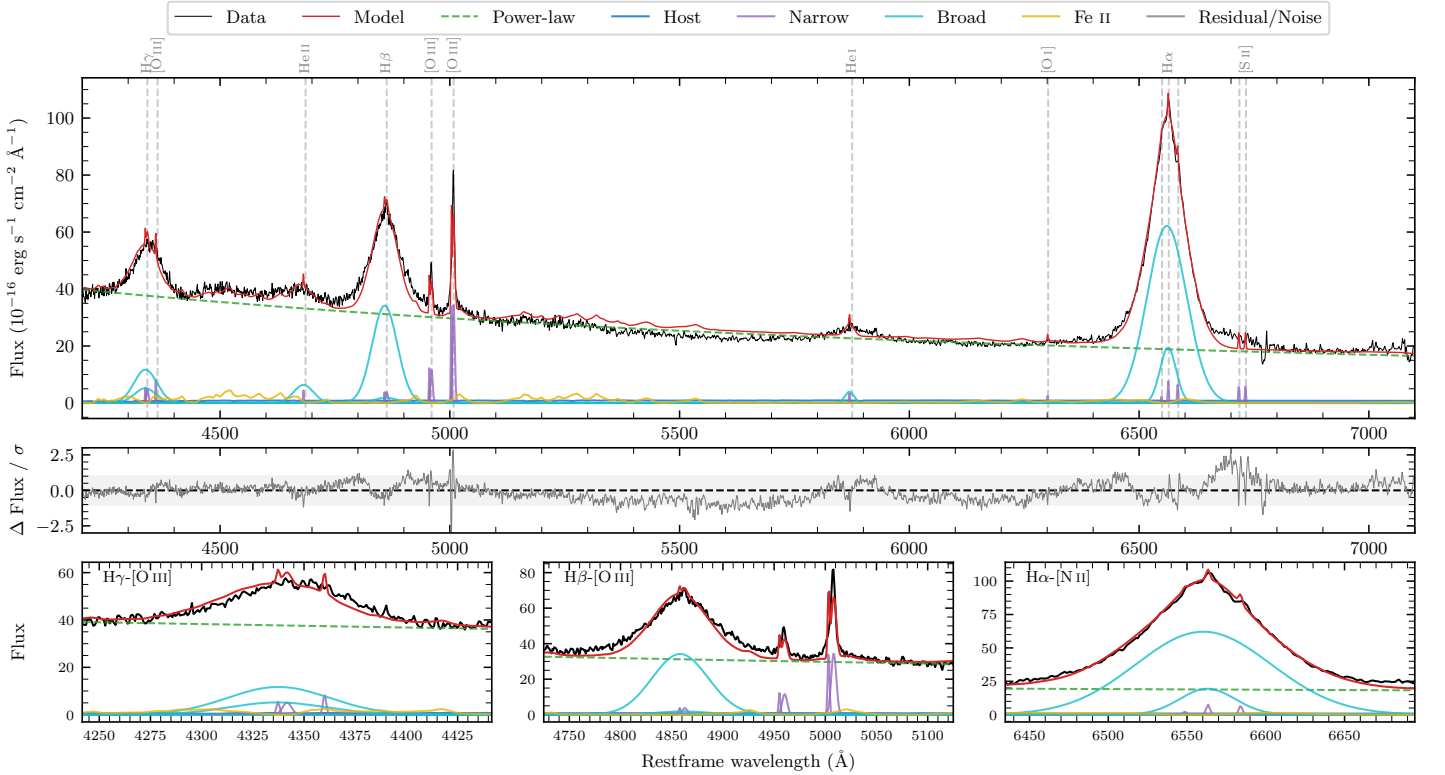
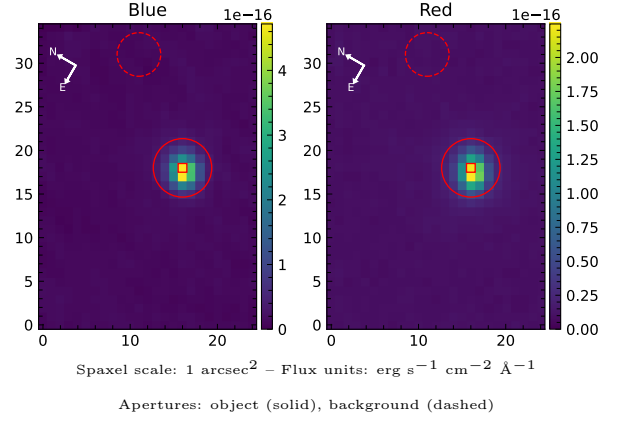


# APMBGC 081-007-020

Spectrum ID	499676875_sp1	Spectrum type	Sy 1.0
Alt name	RXS J02146-6430	Quality flag	good
$z$	0.0740	AGN reference	S+2000
RA, Dec	33.6558, -64.5014	MW $E(B-V)$	0.022
MJD	60918.72	Power law $\alpha_\nu$	$-0.33 \pm 0.06$
SNR/ $\text{\AA}$ B/R	6.8/8.8	$\log L_{5100, \text{AGN}}$	$44.29 \pm 0.01$
Obs airmass	1.19	$\log H\beta_{\text{Br}}/[\text{O III}]$	$0.91 \pm 0.04$
SMSS ID	499676875	$\log M_{L5100}/M_\odot$	$8.22 \pm 0.06$
Neighbour	14.6", 499676872	$\log M_{\text{H}\alpha}/M_\odot$	$8.29 \pm 0.05$
SMSS $\langle r_6^{\text{ap}} \rangle$	$15.41 \pm 0.12$	$\log M_{\text{H}\beta}/M_\odot$	$8.28 \pm 0.06$
2MASS $K_{\text{ext}}$	$12.11 \pm 0.05$	$\log M_{[\text{O III}]} / M_\odot$	$8.03 \pm 0.06$



## Emission Line Measurements

Line	$\log L$ ( $\text{erg s}^{-1}$ )	FWHM ( $\text{km s}^{-1}$ )	$\sigma$ ( $\text{km s}^{-1}$ )	EW ( $\text{\AA}$ )
H $\gamma$ Narrow	$40.78 \pm 0.31$	—	$194 \pm 30$	$1.10 \pm 0.42$
<b>H<math>\gamma</math> Broad</b>	<b><math>42.21 \pm 0.05</math></b>	<b><math>3967 \pm 346</math></b>	<b><math>1482 \pm 136</math></b>	<b><math>29.57 \pm 1.40</math></b>
[O III] 4364	$40.47 \pm 0.32$	$133 \pm 65$	$54 \pm 26$	$0.49 \pm 0.24$
He II Narrow	$40.21 \pm 0.38$	$133 \pm 65$	$54 \pm 26$	$0.30 \pm 0.19$
<b>He II Broad</b>	<b><math>41.69 \pm 0.08</math></b>	<b><math>3241 \pm 111</math></b>	<b><math>1376 \pm 46</math></b>	<b><math>11.11 \pm 1.21</math></b>
H $\beta$ Narrow	$40.70 \pm 0.35$	—	$194 \pm 30$	$1.09 \pm 0.45$
<b>H<math>\beta</math> Broad</b>	<b><math>42.57 \pm 0.02</math></b>	<b><math>3938 \pm 274</math></b>	<b><math>1464 \pm 105</math></b>	<b><math>84.69 \pm 1.48</math></b>
[O III] 5007	$41.67 \pm 0.03$	—	$194 \pm 30$	$10.86 \pm 0.48$
He I Narrow	$40.21 \pm 0.39$	$133 \pm 65$	$54 \pm 26$	$0.45 \pm 0.27$
<b>He I Broad</b>	<b><math>41.17 \pm 0.12</math></b>	<b><math>1193 \pm 67</math></b>	<b><math>506 \pm 27</math></b>	<b><math>4.64 \pm 0.62</math></b>
[O I] 6300	$40.09 \pm 0.31$	$133 \pm 65$	$54 \pm 26$	$0.38 \pm 0.18$
H $\alpha$ Narrow	$40.59 \pm 0.26$	$133 \pm 65$	$54 \pm 26$	$1.29 \pm 0.37$
<b>H<math>\alpha</math> Broad</b>	<b><math>43.04 \pm 0.01</math></b>	<b><math>3753 \pm 103</math></b>	<b><math>1578 \pm 39</math></b>	<b><math>429.70 \pm 1.80</math></b>
[N II] 6585	$40.52 \pm 0.30$	$133 \pm 65$	$54 \pm 26$	$1.14 \pm 0.34$
[S II] 6718	$40.46 \pm 0.24$	$133 \pm 65$	$54 \pm 26$	$1.10 \pm 0.23$
[S II] 6732	$40.46 \pm 0.21$	$133 \pm 65$	$54 \pm 26$	$1.05 \pm 0.23$

## Emission Summary

H $\alpha$ broad SNR	16.55
H $\beta$ broad SNR	7.55
H $\gamma$ broad SNR	3.51
AGN frac	0.98
Host frac	0.02
$\log L_{5100, \text{Host}}$	42.65
Fe II/H $\beta$	0.28
Fe II/[O III]	2.26

## Quality Flags

spurious_hab/hbb	0/0
15100	0
balmer	0
balmer_snr	0
hb_width	0
balmer_width	0