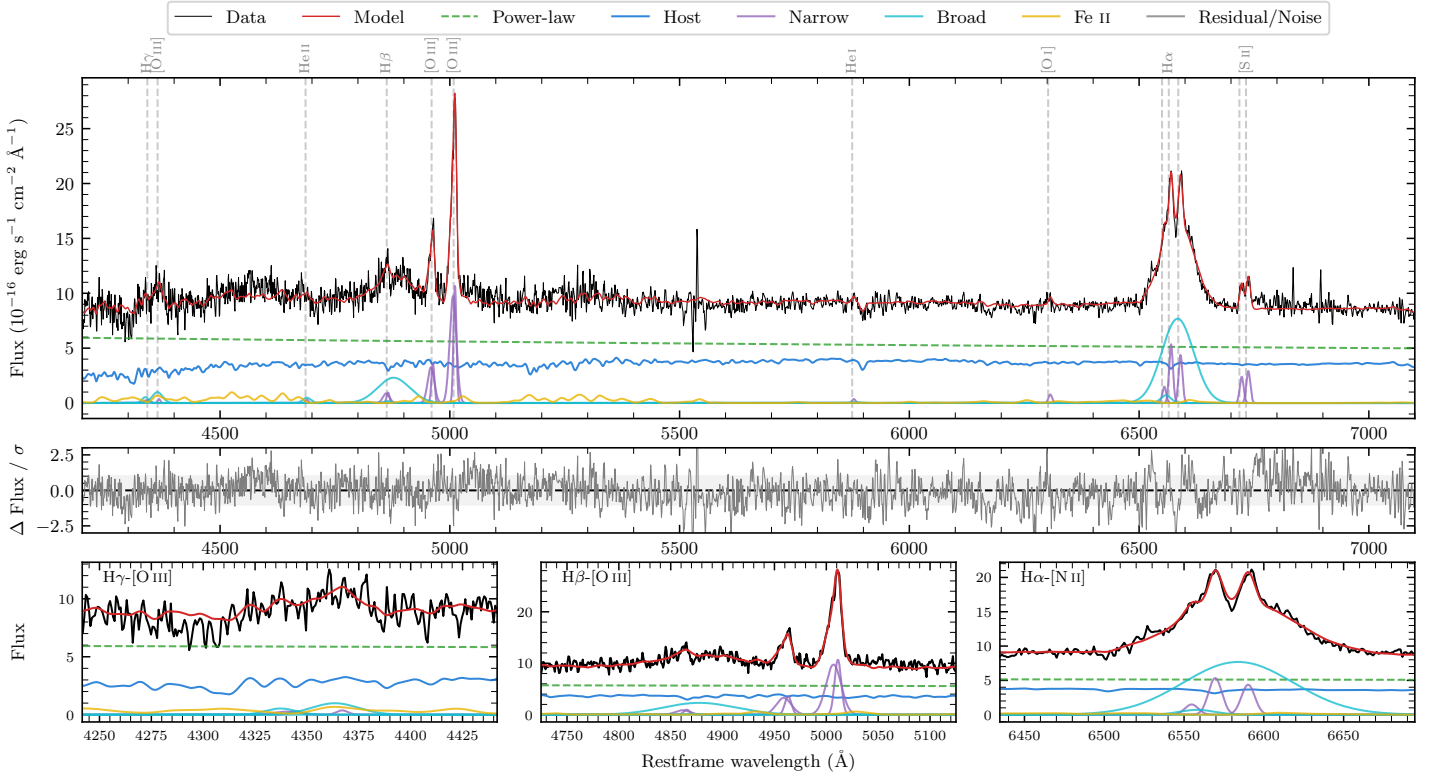
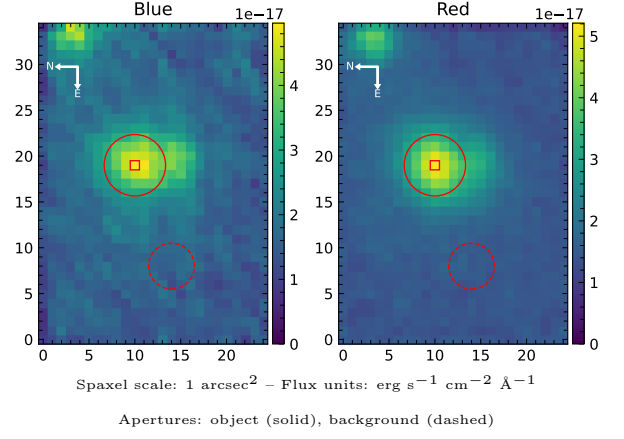


# LEDA 299570

Spectrum ID	497443305_sp1	Spectrum type	Sy 1.5
Alt name	PGC 299570	Quality flag	good
$z$	0.0647	AGN reference	<a href="#">PGC</a>
RA, Dec	67.4476, -67.0556	MW $E(B - V)$	0.036
MJD	60935.76	Power law $\alpha_\nu$	$-1.66 \pm 0.04$
SNR/ $\text{\AA}$ B/R	10.9/20.6	$\log L_{5100, \text{AGN}}$	$43.46 \pm 0.02$
Obs airmass	1.24	$\log H\beta_{\text{Br}}/[\text{O III}]$	$-0.10 \pm 0.04$
SMSS ID	<a href="#">497443305</a>	$\log M_{L5100}/M_\odot$	$8.05 \pm 0.03$
Neighbour	4.5", <a href="#">2712936771</a>	$\log M_{\text{H}\alpha}/M_\odot$	$7.58 \pm 0.02$
SMSS $\langle r_6''_{\text{ap}} \rangle$	$15.76 \pm 0.12$	$\log M_{\text{H}\beta}/M_\odot$	$7.92 \pm 0.04$
2MASS $K_{\text{ext}}$	$11.84 \pm 0.07$	$\log M_{[\text{O III}]} / M_\odot$	$8.11 \pm 0.03$



## Emission Line Measurements

Line	$\log L$ ( $\text{erg s}^{-1}$ )	FWHM ( $\text{km s}^{-1}$ )	$\sigma$ ( $\text{km s}^{-1}$ )	EW ( $\text{\AA}$ )
H $\gamma$ Narrow	$39.84 \pm 0.41$	$696 \pm 66$	$393 \pm 25$	$1.15 \pm 0.70$
<b>H<math>\gamma</math> Broad</b>	<b><math>40.62 \pm 0.15</math></b>	<b><math>2010 \pm 674</math></b>	<b><math>900 \pm 57</math></b>	<b><math>6.81 \pm 0.99</math></b>
[O III] 4364	$39.45 \pm 0.50$	$449 \pm 62$	$190 \pm 25$	$0.47 \pm 0.46$
He II Narrow	$39.44 \pm 0.49$	$449 \pm 62$	$190 \pm 25$	$0.48 \pm 0.41$
<b>He II Broad</b>	<b><math>40.06 \pm 0.29</math></b>	<b><math>1308 \pm 63</math></b>	<b><math>555 \pm 25</math></b>	<b><math>1.95 \pm 0.71</math></b>
H $\beta$ Narrow	$40.39 \pm 0.15$	$696 \pm 66$	$393 \pm 25$	$4.32 \pm 0.65$
<b>H<math>\beta</math> Broad</b>	<b><math>41.35 \pm 0.03</math></b>	<b><math>4888 \pm 169</math></b>	<b><math>1799 \pm 25</math></b>	<b><math>38.58 \pm 1.46</math></b>
[O III] 5007	$41.46 \pm 0.01$	$696 \pm 66$	$393 \pm 25$	$50.10 \pm 0.70$
He I Narrow	$39.57 \pm 0.31$	$449 \pm 62$	$190 \pm 25$	$0.69 \pm 0.27$
<b>He I Broad</b>	<b><math>39.41 \pm 0.47</math></b>	<b><math>1221 \pm 62</math></b>	<b><math>518 \pm 25</math></b>	<b><math>0.47 \pm 0.46</math></b>
[O I] 6300	$39.93 \pm 0.11$	$449 \pm 62$	$190 \pm 25$	$1.62 \pm 0.25$
H $\alpha$ Narrow	$40.78 \pm 0.03$	$449 \pm 62$	$190 \pm 25$	$11.66 \pm 0.33$
<b>H<math>\alpha</math> Broad</b>	<b><math>41.87 \pm 0.01</math></b>	<b><math>3767 \pm 64</math></b>	<b><math>1321 \pm 25</math></b>	<b><math>142.79 \pm 0.93</math></b>
[N II] 6585	$40.70 \pm 0.03$	$449 \pm 62$	$190 \pm 25$	$9.58 \pm 0.32$
[S II] 6718	$40.45 \pm 0.04$	$449 \pm 62$	$190 \pm 25$	$5.40 \pm 0.29$
[S II] 6732	$40.53 \pm 0.03$	$449 \pm 62$	$190 \pm 25$	$6.57 \pm 0.29$

## Emission Summary

H $\alpha$ broad SNR	9.12
H $\beta$ broad SNR	2.91
H $\gamma$ broad SNR	1.29
AGN frac	0.61
Host frac	0.39
$\log L_{5100, \text{Host}}$	43.27
Fe II/H $\beta$	0.73
Fe II/[O III]	0.57

## Quality Flags

spurious_hab/hbb	0/0
15100	0
balmer	1
balmer_snr	1
hb_width	0
balmer_width	0