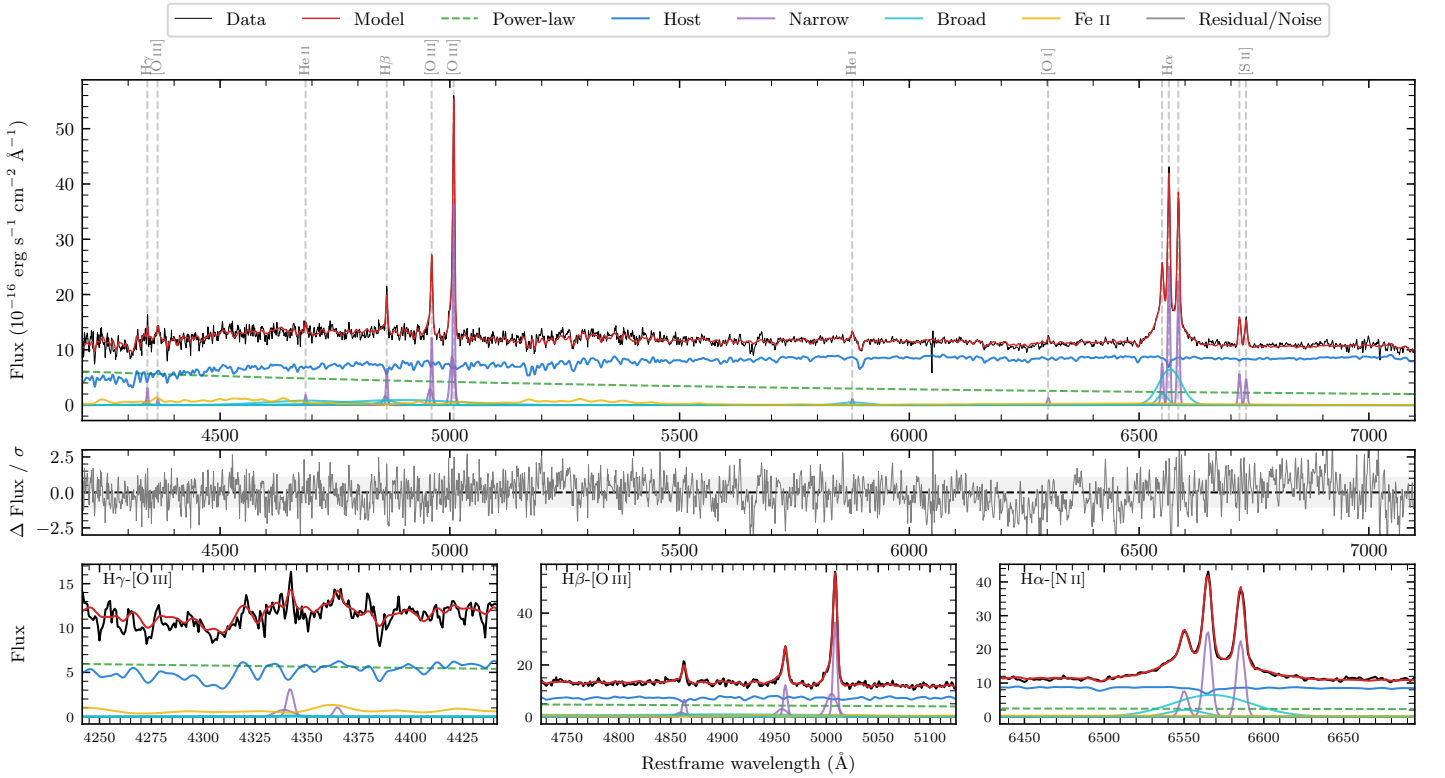
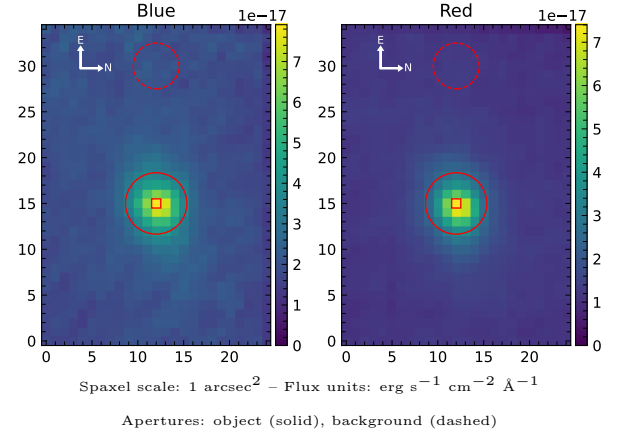


LEDA 14640

Spectrum ID	497171829_sp1	Spectrum type	Sy 1.8
Alt name	g0412220-690821	Quality flag	good
z	0.0420	AGN reference	6dFGS
RA, Dec	63.0915, -69.1392	MW $E(B - V)$	0.050
MJD	60257.65	Power law α_ν	0.13 ± 0.19
SNR/Å B/R	16.9/31.1	$\log L_{5100, \text{AGN}}$	42.93 ± 0.03
Obs airmass	1.27	$\log H\beta_{\text{Br}}/[\text{O III}]$	-0.86 ± 0.51
SMSS ID	497171829	$\log M_{L5100}/M_\odot$	7.37 ± 0.03
Neighbour	12.5", 2712582647	$\log M_{\text{H}\alpha}/M_\odot$	6.89 ± 0.04
SMSS $\langle r_6''_{\text{ap}} \rangle$	16.07 ± 0.07	$\log M_{\text{H}\beta}/M_\odot$	6.96 ± 0.25
2MASS K_{ext}	12.09 ± 0.09	$\log M_{[\text{O III}]} / M_\odot$	7.48 ± 0.03



Emission Line Measurements

Line	$\log L$ (erg s^{-1})	FWHM (km s^{-1})	σ (km s^{-1})	EW (Angstroms)
H γ Narrow	39.96 ± 0.09	308 ± 63	227 ± 26	3.94 ± 0.56
Hγ Broad	—	—	—	—
[O III] 4364	39.28 ± 0.28	272 ± 62	115 ± 25	0.84 ± 0.34
He II Narrow	39.55 ± 0.13	272 ± 62	115 ± 25	1.80 ± 0.33
He II Broad	—	—	—	—
H β Narrow	40.34 ± 0.03	308 ± 63	227 ± 26	11.98 ± 0.54
Hβ Broad	$40.23^{+0.91}_{-0.10}$	2911 ± 61	1074 ± 30	9.33 ± 1.12
[O III] 5007	41.09 ± 0.01	308 ± 63	227 ± 26	71.03 ± 0.62
He I Narrow	39.43 ± 0.11	272 ± 62	115 ± 25	2.18 ± 0.28
He I Broad	40.16 ± 0.07	3264 ± 73	1386 ± 30	11.87 ± 1.04
[O I] 6300	39.52 ± 0.08	272 ± 62	115 ± 25	3.12 ± 0.34
H α Narrow	40.84 ± 0.01	272 ± 62	115 ± 25	71.01 ± 0.53
Hα Broad	41.29 ± 0.01	2551 ± 69	951 ± 25	202.14 ± 1.37
[N II] 6585	40.78 ± 0.01	272 ± 62	115 ± 25	63.47 ± 0.54
[S II] 6718	40.19 ± 0.02	272 ± 62	115 ± 25	16.86 ± 0.39
[S II] 6732	40.12 ± 0.02	272 ± 62	115 ± 25	14.51 ± 0.40

Emission Summary

H α broad SNR	10.35
H β broad SNR	1.07
H γ broad SNR	0.00
AGN frac	0.37
Host frac	0.63
$\log L_{5100, \text{Host}}$	43.16
Fe II/H β	—
Fe II/[O III]	—

Quality Flags

spurious_hab/hbb	0/2
15100	1
balmer	1
balmer_snr	2
hb_width	0
balmer_width	0