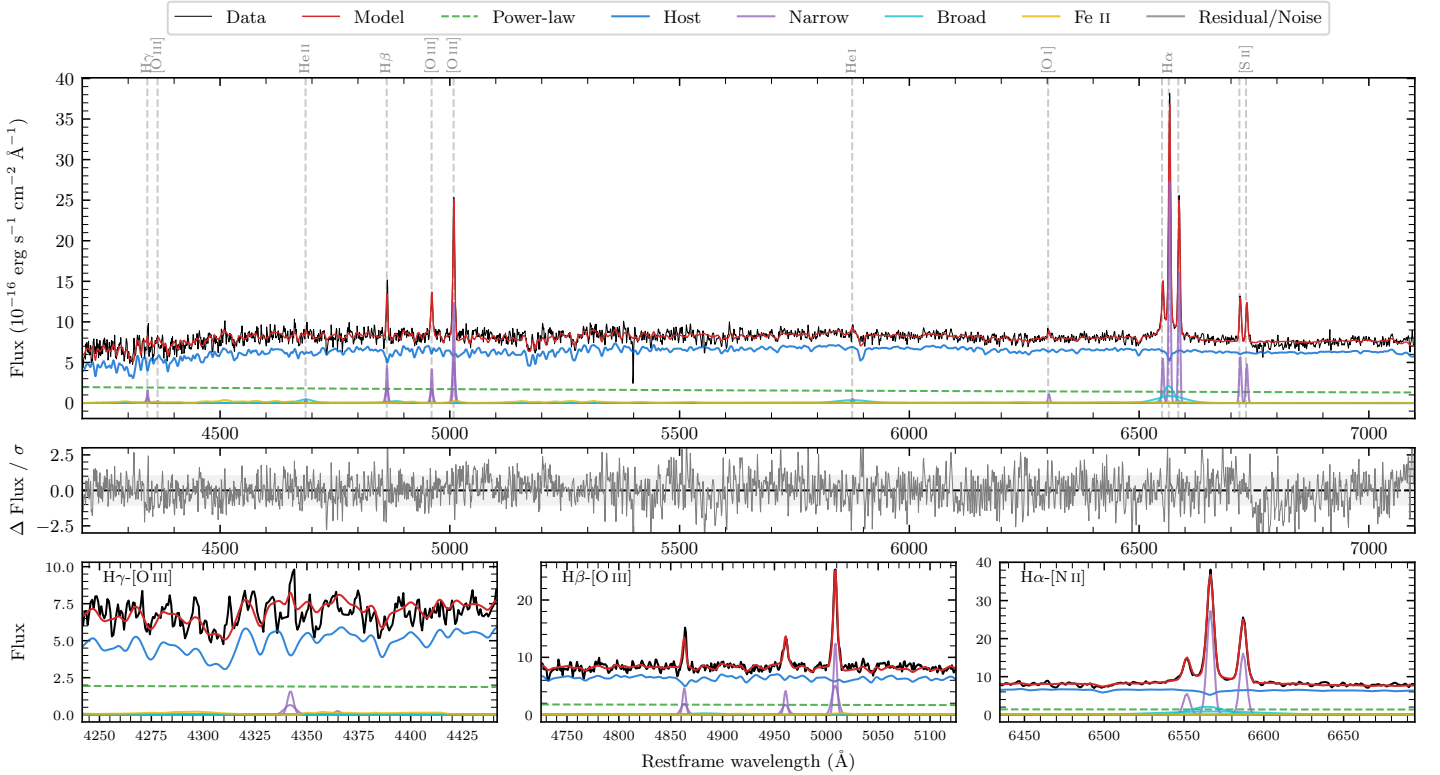
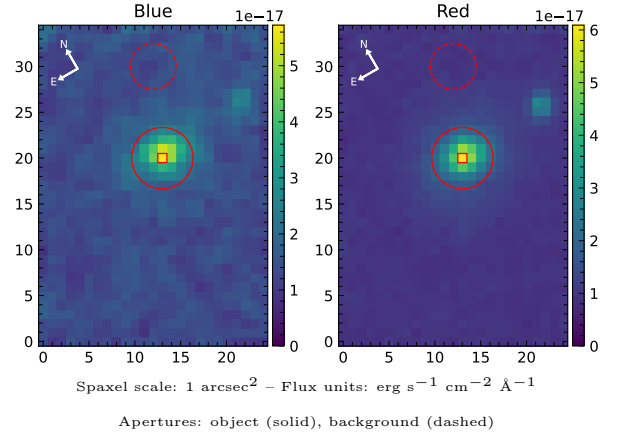


# LEDA 1145145

Spectrum ID	4970312_sp1	Spectrum type	Sy 2
Alt name	g2124019-002159	Quality flag	good
$z$	0.0620	AGN reference	6dFGS
RA, Dec	321.0079, -0.3663	MW $E(B - V)$	0.042
MJD	60913.52	Power law $\alpha_\nu$	$-1.23 \pm 0.12$
SNR/ $\text{\AA}$ B/R	12.0/22.8	$\log L_{5100, \text{AGN}}$	$42.90 \pm 0.04$
Obs airmass	1.19	$\log H\beta_{\text{Br}}/[\text{O III}]$	—
SMSS ID	4970312	$\log M_{L5100}/M_\odot$	—
Neighbour	9.8", 4970296	$\log M_{\text{H}\alpha}/M_\odot$	—
SMSS $\langle r_6''_{\text{ap}} \rangle$	$16.31 \pm 0.04$	$\log M_{\text{H}\beta}/M_\odot$	—
2MASS $K_{\text{ext}}$	$12.59 \pm 0.10$	$\log M_{[\text{O III}]} / M_\odot$	—



## Emission Line Measurements

Line	$\log L$ (erg s <sup>-1</sup> )	FWHM (km s <sup>-1</sup> )	$\sigma$ (km s <sup>-1</sup> )	EW (Å)
H $\gamma$ Narrow	$40.00 \pm 0.12$	$271 \pm 63$	$144 \pm 26$	$5.62 \pm 1.08$
<b>H<math>\gamma</math> Broad</b>	—	—	—	—
[O III] 4364	—	—	—	—
He II Narrow	$39.28 \pm 0.37$	$231 \pm 62$	$97 \pm 25$	$1.15 \pm 0.73$
<b>He II Broad</b>	<b><math>40.24 \pm 0.18</math></b>	<b><math>2373 \pm 65</math></b>	<b><math>1007 \pm 26</math></b>	<b><math>10.46 \pm 2.32</math></b>
H $\beta$ Narrow	$40.51 \pm 0.04$	$271 \pm 63$	$144 \pm 26$	$19.82 \pm 1.02$
<b>H<math>\beta</math> Broad</b>	—	—	—	—
[O III] 5007	$40.95 \pm 0.02$	$271 \pm 63$	$144 \pm 26$	$56.21 \pm 1.12$
He I Narrow	$39.43 \pm 0.20$	$231 \pm 62$	$97 \pm 25$	$1.95 \pm 0.53$
<b>He I Broad</b>	<b><math>40.48 \pm 0.08</math></b>	<b><math>4055 \pm 65</math></b>	<b><math>1722 \pm 26</math></b>	<b><math>21.48 \pm 2.28</math></b>
[O I] 6300	$39.74 \pm 0.09$	$231 \pm 62$	$97 \pm 25$	$4.19 \pm 0.52$
H $\alpha$ Narrow	$41.32 \pm 0.01$	$231 \pm 62$	$97 \pm 25$	$111.85 \pm 0.71$
<b>H<math>\alpha</math> Broad</b>	—	—	—	—
[N II] 6585	$41.10 \pm 0.01$	$231 \pm 62$	$97 \pm 25$	$66.30 \pm 0.65$
[S II] 6718	$40.49 \pm 0.02$	$231 \pm 62$	$97 \pm 25$	$24.88 \pm 0.73$
[S II] 6732	$40.41 \pm 0.03$	$231 \pm 62$	$97 \pm 25$	$20.45 \pm 0.66$

## Emission Summary

H $\alpha$ broad SNR	0.00
H $\beta$ broad SNR	0.00
H $\gamma$ broad SNR	0.00
AGN frac	0.22
Host frac	0.78
$\log L_{5100, \text{Host}}$	43.46
Fe II/H $\beta$	—
Fe II/[O III]	0.59

## Quality Flags

spurious_hab/hbb	1/0
15100	1
balmer	2
balmer_snr	2
hb_width	2
balmer_width	2