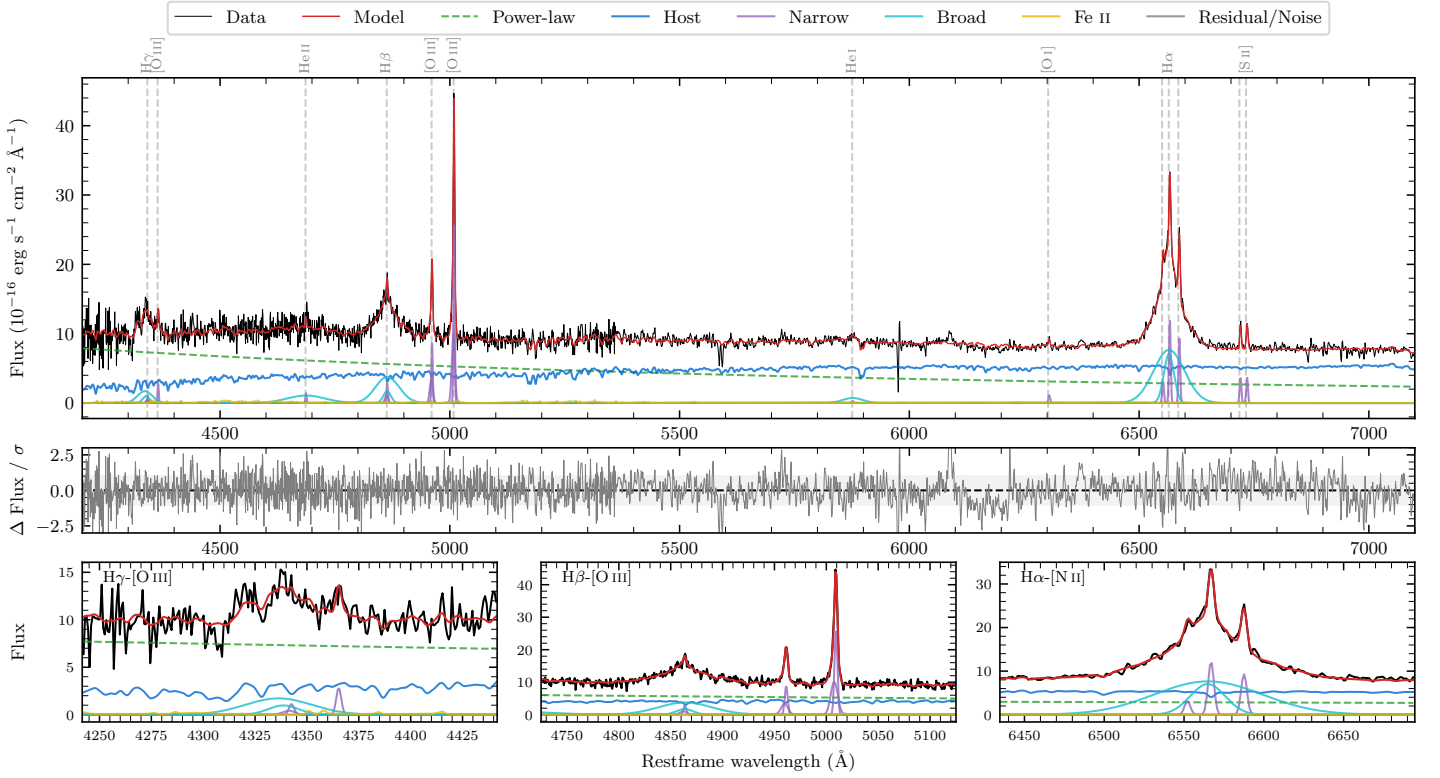
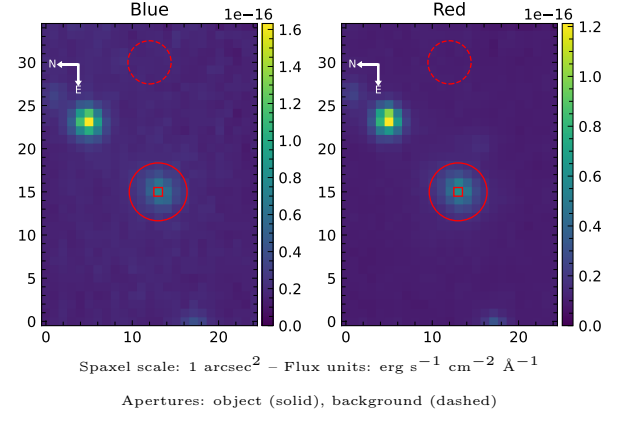


2MASS J06363234–2051009

Spectrum ID	49237830_sp1	Spectrum type	Sy 1.5
Alt name	g0636323–205101	Quality flag	good
z	0.0543	AGN reference	6dFGS
RA, Dec	99.1348, –20.8503	MW $E(B - V)$	0.146
MJD	60266.7	Power law α_ν	0.30 ± 0.14
SNR/ \AA B/R	11.0/18.2	$\log L_{5100, \text{AGN}}$	43.26 ± 0.02
Obs airmass	1.02	$\log H\beta_{\text{Br}}/[\text{O III}]$	0.19 ± 0.02
SMSS ID	49237830	$\log M_{L5100}/M_\odot$	7.42 ± 0.12
Neighbour	5.6", 1059096052	$\log M_{\text{H}\alpha}/M_\odot$	6.96 ± 0.04
SMSS $\langle r_{6''}^{\text{ap}} \rangle$	16.97 ± 0.06	$\log M_{\text{H}\beta}/M_\odot$	7.36 ± 0.13
2MASS K_{ext}	13.14 ± 0.13	$\log M_{[\text{O III}]} / M_\odot$	7.41 ± 0.12



Emission Line Measurements

Line	$\log L$ (erg s^{-1})	FWHM (km s^{-1})	σ (km s^{-1})	EW (\AA)
H γ Narrow	39.69 ± 0.28	245 ± 63	159 ± 26	0.95 ± 0.42
Hγ Broad	40.81 ± 0.07	1922 ± 396	812 ± 68	12.45 ± 1.04
[O III] 4364	39.81 ± 0.14	197 ± 63	84 ± 25	1.27 ± 0.30
He II Narrow	39.54 ± 0.22	197 ± 63	84 ± 25	0.80 ± 0.27
He II Broad	40.92 ± 0.06	6141 ± 115	2608 ± 48	19.17 ± 1.60
H β Narrow	40.15 ± 0.10	245 ± 63	159 ± 26	3.52 ± 0.44
Hβ Broad	41.32 ± 0.02	2613 ± 364	1249 ± 45	52.28 ± 1.23
[O III] 5007	41.12 ± 0.01	245 ± 63	159 ± 26	35.86 ± 0.48
He I Narrow	38.95 ± 0.37	197 ± 63	84 ± 25	0.34 ± 0.25
He I Broad	40.47 ± 0.06	2588 ± 103	1099 ± 43	11.42 ± 0.99
[O I] 6300	39.58 ± 0.10	197 ± 63	84 ± 25	1.73 ± 0.28
H α Narrow	40.62 ± 0.02	197 ± 63	84 ± 25	20.87 ± 0.47
Hα Broad	41.80 ± 0.01	1955 ± 78	1086 ± 25	314.07 ± 1.68
[N II] 6585	40.50 ± 0.02	197 ± 63	84 ± 25	16.09 ± 0.47
[S II] 6718	40.12 ± 0.04	197 ± 63	84 ± 25	6.89 ± 0.37
[S II] 6732	40.11 ± 0.04	197 ± 63	84 ± 25	6.80 ± 0.34

Emission Summary

H α broad SNR	16.36
H β broad SNR	6.12
H γ broad SNR	3.06
AGN frac	0.56
Host frac	0.44
$\log L_{5100, \text{Host}}$	43.16
Fe II/H β	0.17
Fe II/[O III]	0.27

Quality Flags

spurious_hab/hbb	0/0
15100	0
balmer	0
balmer_snr	0
hb_width	0
balmer_width	0