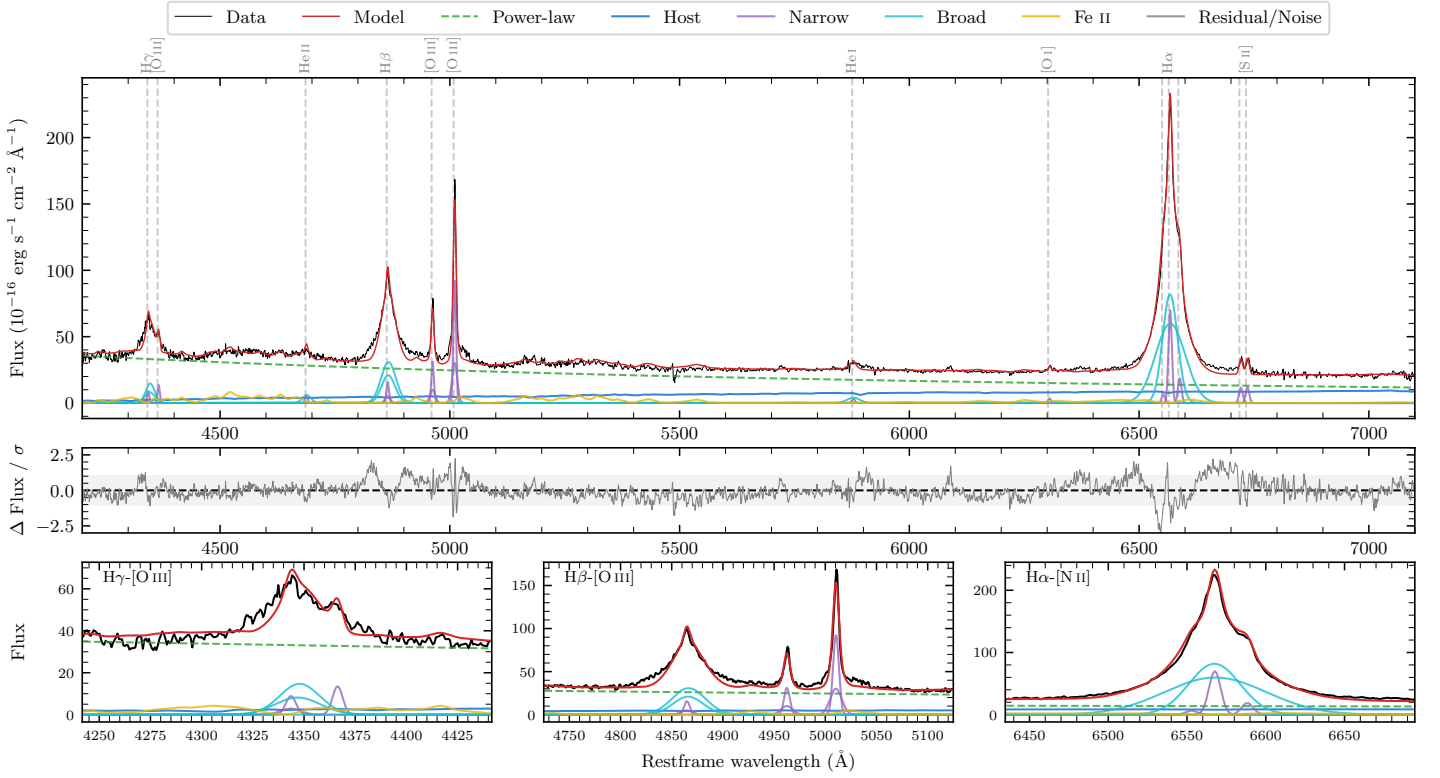
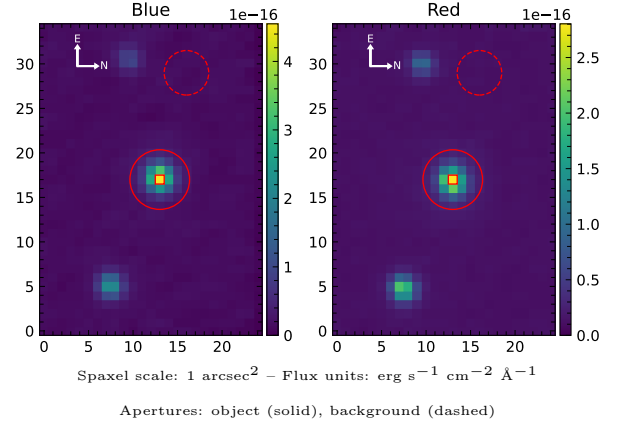


# LEDA 3095437

Spectrum ID	491314147_sp1	Spectrum type	Sy 1.2
Alt name	PGC 3095437	Quality flag	good
$z$	0.0744	AGN reference	<a href="#">PGC</a>
RA, Dec	8.5700, -79.0890	MW $E(B - V)$	0.070
MJD	60931.57	Power law $\alpha_\nu$	$0.12 \pm 0.20$
SNR/ $\text{\AA}$ B/R	6.6/9.2	$\log L_{5100, \text{AGN}}$	$44.21 \pm 0.03$
Obs airmass	1.51	$\log H\beta_{\text{Br}}/[\text{O III}]$	$0.30 \pm 0.08$
SMSS ID	<a href="#">491314147</a>	$\log M_{L5100}/M_\odot$	$7.80 \pm 0.08$
Neighbour	13.3", <a href="#">491314145</a>	$\log M_{\text{H}\alpha}/M_\odot$	$7.83 \pm 0.11$
SMSS $\langle r_6'' \text{ap} \rangle$	$15.00 \pm 0.04$	$\log M_{\text{H}\beta}/M_\odot$	$7.86 \pm 0.09$
2MASS $K_{\text{ext}}$	$11.63 \pm 0.05$	$\log M_{[\text{O III}]} / M_\odot$	$7.91 \pm 0.09$



## Emission Line Measurements

Line	$\log L$ ( $\text{erg s}^{-1}$ )	FWHM ( $\text{km s}^{-1}$ )	$\sigma$ ( $\text{km s}^{-1}$ )	EW ( $\text{\AA}$ )
H $\gamma$ Narrow	$41.16 \pm 0.26$	$466 \pm 124$	$292 \pm 70$	$2.95 \pm 0.73$
<b>H<math>\gamma</math> Broad</b>	<b><math>41.98 \pm 0.08</math></b>	<b><math>1802 \pm 415</math></b>	<b><math>593 \pm 140</math></b>	<b><math>19.06 \pm 1.07</math></b>
[O III] 4364	$41.04 \pm 0.36$	$404 \pm 111$	$170 \pm 46$	$2.76 \pm 0.49$
He II Narrow	$40.66 \pm 0.42$	$404 \pm 111$	$170 \pm 46$	$1.39 \pm 0.46$
<b>He II Broad</b>	<b><math>41.31 \pm 0.15</math></b>	<b><math>1425 \pm 139</math></b>	<b><math>605 \pm 58</math></b>	<b><math>5.42 \pm 0.89</math></b>
H $\beta$ Narrow	$41.47 \pm 0.14$	$466 \pm 124$	$292 \pm 70$	$7.39 \pm 0.84$
<b>H<math>\beta</math> Broad</b>	<b><math>42.51 \pm 0.05</math></b>	<b><math>2519 \pm 230</math></b>	<b><math>834 \pm 118</math></b>	<b><math>83.83 \pm 1.38</math></b>
[O III] 5007	$42.21 \pm 0.06$	$466 \pm 124$	$292 \pm 70$	$48.04 \pm 0.91$
He I Narrow	$40.54 \pm 0.34$	$404 \pm 111$	$170 \pm 46$	$1.61 \pm 0.53$
<b>He I Broad</b>	<b><math>41.30 \pm 0.21</math></b>	<b><math>1658 \pm 394</math></b>	<b><math>704 \pm 167</math></b>	<b><math>8.62 \pm 1.03</math></b>
[O I] 6300	$40.63 \pm 0.21$	$404 \pm 111$	$170 \pm 46$	$2.23 \pm 0.50$
H $\alpha$ Narrow	$41.93 \pm 0.19$	$404 \pm 111$	$170 \pm 46$	$51.00 \pm 1.18$
<b>H<math>\alpha</math> Broad</b>	<b><math>43.06 \pm 0.02</math></b>	<b><math>2196 \pm 268</math></b>	<b><math>972 \pm 107</math></b>	<b><math>637.29 \pm 2.32</math></b>
[N II] 6585	$41.41 \pm 0.22$	$404 \pm 111$	$170 \pm 46$	$13.78 \pm 1.04$
[S II] 6718	$41.18 \pm 0.09$	$404 \pm 111$	$170 \pm 46$	$9.17 \pm 0.66$
[S II] 6732	$41.21 \pm 0.12$	$404 \pm 111$	$170 \pm 46$	$9.44 \pm 0.83$

## Emission Summary

H $\alpha$ broad SNR	27.46
H $\beta$ broad SNR	10.17
H $\gamma$ broad SNR	4.58
AGN frac	0.83
Host frac	0.16
$\log L_{5100, \text{Host}}$	43.50
Fe II/H $\beta$	0.62
Fe II/[O III]	1.15

## Quality Flags

spurious_hab/hbb	0/0
15100	0
balmer	0
balmer_snr	0
hb_width	0
balmer_width	0