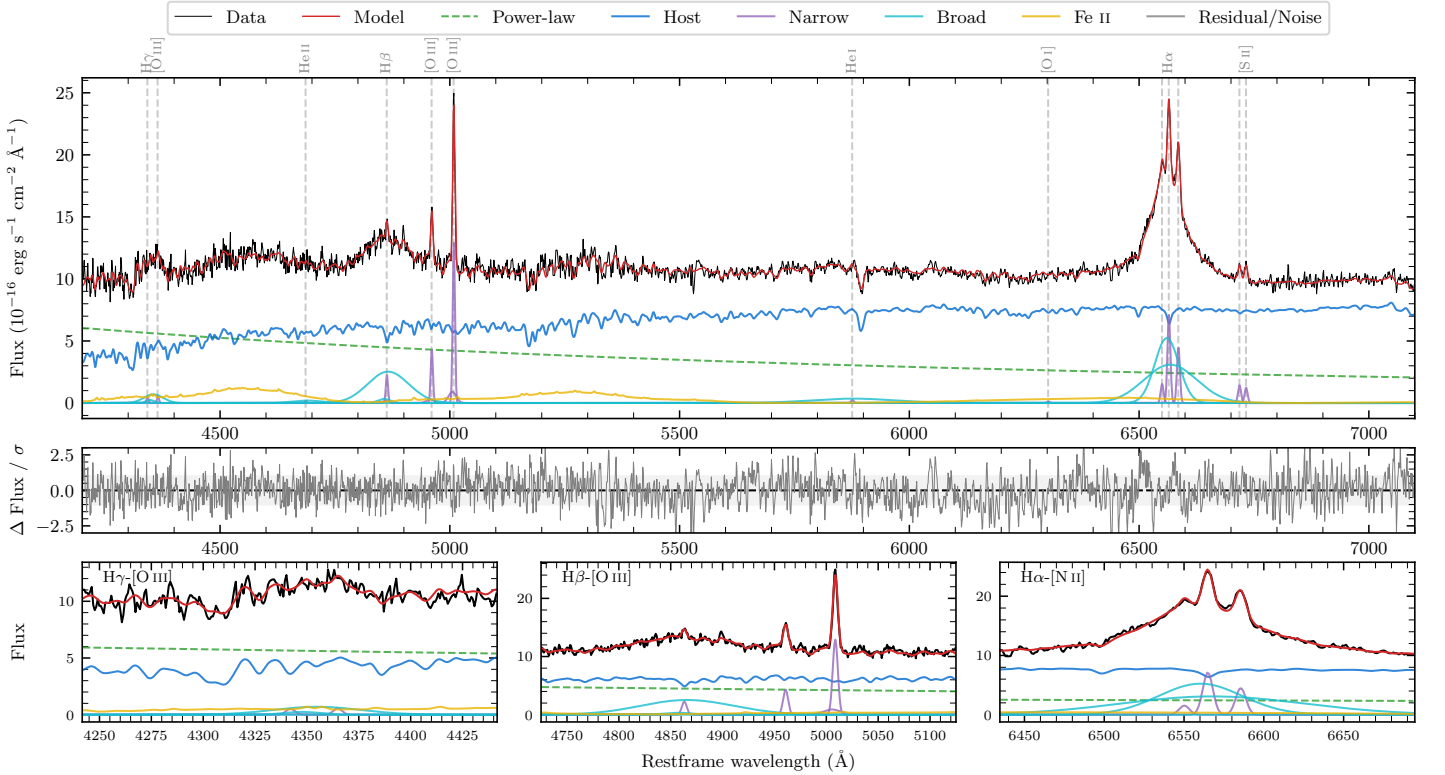
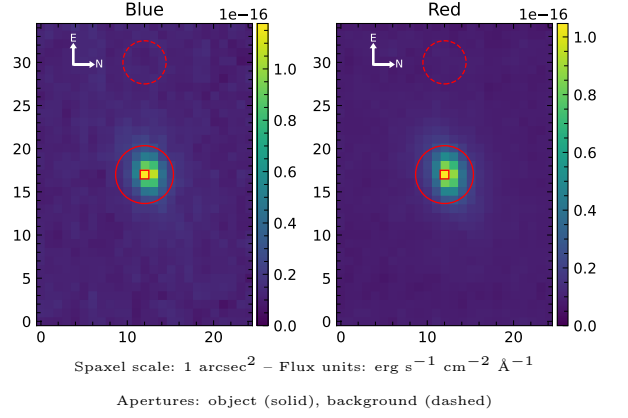


# LEDA 89337

Spectrum ID	490077605_sp1	Spectrum type	Sy 1.2
Alt name	g2301174-441810	Quality flag	good
$z$	0.0666	AGN reference	6dFGS
RA, Dec	345.3226, -44.3026	MW $E(B - V)$	0.009
MJD	60176.59	Power law $\alpha_\nu$	$0.05 \pm 0.16$
SNR/ $\text{\AA}$ B/R	22.6/38.3	$\log L_{5100, \text{AGN}}$	$43.35 \pm 0.03$
Obs airmass	1.05	$\log H\beta_{\text{Br}}/[\text{O III}]$	$0.48 \pm 0.02$
SMSS ID	490077605	$\log M_{L5100}/M_\odot$	$8.17 \pm 0.05$
Neighbour	None $< 15''$	$\log M_{H\alpha}/M_\odot$	$7.59 \pm 0.02$
SMSS $\langle r_6 \rangle_{\text{ap}}$	$15.96 \pm 0.12$	$\log M_{H\beta}/M_\odot$	$8.17 \pm 0.06$
2MASS $K_{\text{ext}}$	$12.20 \pm 0.07$	$\log M_{[\text{O III}]} / M_\odot$	$8.09 \pm 0.06$



## Emission Line Measurements

Line	$\log L$ ( $\text{erg s}^{-1}$ )	FWHM ( $\text{km s}^{-1}$ )	$\sigma$ ( $\text{km s}^{-1}$ )	EW ( $\text{\AA}$ )
H $\gamma$ Narrow	$39.59 \pm 0.29$	$361 \pm 63$	$270 \pm 32$	$0.64 \pm 0.40$
<b>H<math>\gamma</math> Broad</b>	<b><math>40.69 \pm 0.08</math></b>	<b><math>2838 \pm 484</math></b>	<b><math>1098 \pm 80</math></b>	<b><math>7.90 \pm 0.73</math></b>
[O III] 4364	$39.53 \pm 0.29$	$347 \pm 63$	$146 \pm 25$	$0.56 \pm 0.23$
He II Narrow	—	—	—	—
<b>He II Broad</b>	<b><math>40.26 \pm 0.18</math></b>	<b><math>4555 \pm 111</math></b>	<b><math>1934 \pm 47</math></b>	<b><math>3.48 \pm 0.88</math></b>
H $\beta$ Narrow	$40.28 \pm 0.07$	$361 \pm 63$	$271 \pm 32$	$3.95 \pm 0.48$
<b>H<math>\beta</math> Broad</b>	<b><math>41.53 \pm 0.01</math></b>	<b><math>5965 \pm 348</math></b>	<b><math>2346 \pm 53</math></b>	<b><math>70.26 \pm 1.20</math></b>
[O III] 5007	$41.05 \pm 0.01$	$361 \pm 63$	$271 \pm 32$	$24.78 \pm 0.53$
He I Narrow	$39.34 \pm 0.24$	$347 \pm 63$	$146 \pm 25$	$0.66 \pm 0.25$
<b>He I Broad</b>	<b><math>40.96 \pm 0.05</math></b>	<b><math>10821 \pm 136</math></b>	<b><math>4595 \pm 57</math></b>	<b><math>28.25 \pm 1.91</math></b>
[O I] 6300	$39.07 \pm 0.35$	$347 \pm 63$	$146 \pm 25$	$0.41 \pm 0.26$
H $\alpha$ Narrow	$40.82 \pm 0.02$	$347 \pm 63$	$146 \pm 25$	$25.16 \pm 0.41$
<b>H<math>\alpha</math> Broad</b>	<b><math>41.96 \pm 0.01</math></b>	<b><math>3582 \pm 79</math></b>	<b><math>1646 \pm 27</math></b>	<b><math>347.38 \pm 1.53</math></b>
[N II] 6585	$40.62 \pm 0.02$	$347 \pm 63$	$146 \pm 25$	$16.04 \pm 0.38$
[S II] 6718	$40.13 \pm 0.04$	$347 \pm 63$	$146 \pm 25$	$5.43 \pm 0.34$
[S II] 6732	$40.07 \pm 0.05$	$347 \pm 63$	$146 \pm 25$	$4.73 \pm 0.36$

## Emission Summary

H $\alpha$ broad SNR	17.52
H $\beta$ broad SNR	6.00
H $\gamma$ broad SNR	2.03
AGN frac	0.40
Host frac	0.60
$\log L_{5100, \text{Host}}$	43.52
Fe II/H $\beta$	0.97
Fe II/[O III]	2.90

## Quality Flags

spurious_hab/hbb	0/0
15100	1
balmer	0
balmer_snr	1
hb_width	0
balmer_width	0