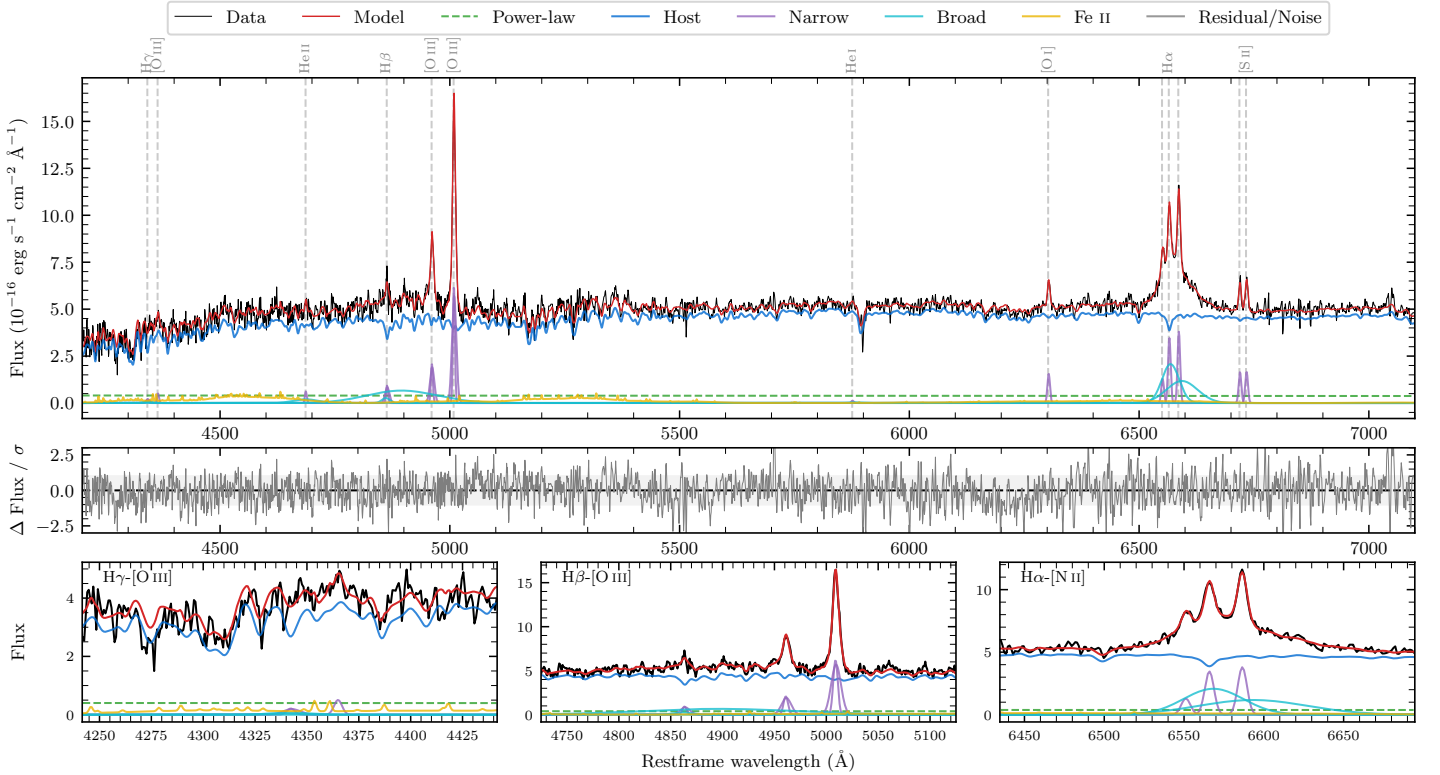
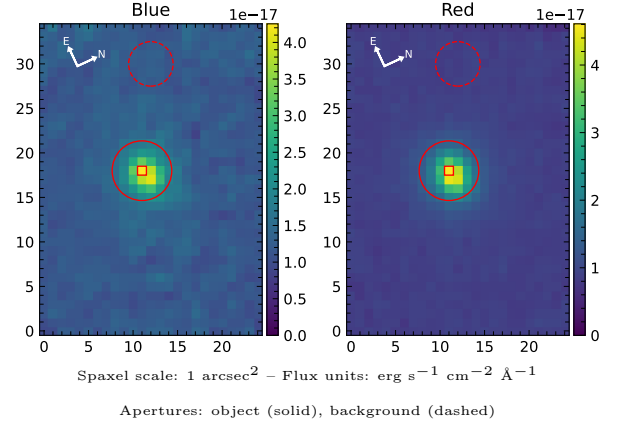


# LEDA 126593

Spectrum ID	490068060_sp1	Spectrum type	Sy 1.5
Alt name	g2249044-445233	Quality flag	good
$z$	0.0687	AGN reference	6dFGS
RA, Dec	342.2682, -44.8756	MW $E(B - V)$	0.009
MJD	60176.57	Power law $\alpha_\nu$	$-1.86 \pm 0.18$
SNR/ $\text{\AA}$ B/R	12.8/24.9	$\log L_{5100, \text{AGN}}$	$42.36 \pm 0.12$
Obs airmass	1.07	$\log H\beta_{\text{Br}}/[\text{O III}]$	$0.12 \pm 0.03$
SMSS ID	490068060	$\log M_{L5100}/M_\odot$	$8.08 \pm 0.18$
Neighbour	None $< 15''$	$\log M_{\text{H}\alpha}/M_\odot$	$6.95 \pm 0.04$
SMSS $\langle r_6'' \text{ap} \rangle$	$16.64 \pm 0.21$	$\log M_{\text{H}\beta}/M_\odot$	$8.35 \pm 0.17$
2MASS $K_{\text{ext}}$	$12.78 \pm 0.12$	$\log M_{[\text{O III}]} / M_\odot$	$8.43 \pm 0.17$



## Emission Line Measurements

Line	$\log L$ (erg s <sup>-1</sup> )	FWHM (km s <sup>-1</sup> )	$\sigma$ (km s <sup>-1</sup> )	EW (Å)
H $\gamma$ Narrow	$39.56 \pm 0.30$	$432 \pm 63$	$243 \pm 26$	$8.01 \pm 3.44$
<b>H<math>\gamma</math> Broad</b>	—	—	—	—
[O III] 4364	$39.47 \pm 0.25$	$309 \pm 63$	$131 \pm 25$	$6.50 \pm 2.39$
He II Narrow	$39.58 \pm 0.20$	$309 \pm 63$	$131 \pm 25$	$8.47 \pm 2.18$
<b>He II Broad</b>	<b><math>40.21 \pm 0.18</math></b>	<b><math>4008 \pm 64</math></b>	<b><math>1702 \pm 26</math></b>	<b><math>35.57 \pm 8.03</math></b>
H $\beta$ Narrow	$40.25 \pm 0.08$	$432 \pm 63$	$243 \pm 26$	$39.74 \pm 3.24$
<b>H<math>\beta</math> Broad</b>	<b><math>41.21 \pm 0.03</math></b>	<b><math>8663 \pm 1800</math></b>	<b><math>3890 \pm 53</math></b>	<b><math>360.73 \pm 14.23</math></b>
[O III] 5007	$41.09 \pm 0.01$	$432 \pm 63$	$243 \pm 26$	$276.40 \pm 3.65$
He I Narrow	$39.01 \pm 0.38$	$309 \pm 63$	$131 \pm 25$	$2.34 \pm 1.41$
<b>He I Broad</b>	—	—	—	—
[O I] 6300	$40.12 \pm 0.03$	$309 \pm 63$	$131 \pm 25$	$30.33 \pm 1.41$
H $\alpha$ Narrow	$40.48 \pm 0.02$	$309 \pm 63$	$131 \pm 25$	$70.50 \pm 1.62$
<b>H<math>\alpha</math> Broad</b>	<b><math>41.38 \pm 0.01</math></b>	<b><math>2576 \pm 85</math></b>	<b><math>1038 \pm 25</math></b>	<b><math>557.79 \pm 5.38</math></b>
[N II] 6585	$40.53 \pm 0.02$	$309 \pm 63$	$131 \pm 25$	$77.60 \pm 1.65$
[S II] 6718	$40.17 \pm 0.03$	$309 \pm 63$	$131 \pm 25$	$34.43 \pm 1.56$
[S II] 6732	$40.18 \pm 0.03$	$309 \pm 63$	$131 \pm 25$	$34.80 \pm 1.57$

## Emission Summary

H $\alpha$ broad SNR	8.22
H $\beta$ broad SNR	2.39
H $\gamma$ broad SNR	0.38
AGN frac	0.09
Host frac	0.91
$\log L_{5100, \text{Host}}$	43.38
Fe II/H $\beta$	0.65
Fe II/[O III]	0.85

## Quality Flags

spurious_hab/hbb	0/0
15100	2
balmer	1
balmer_snr	2
hb_width	0
balmer_width	1