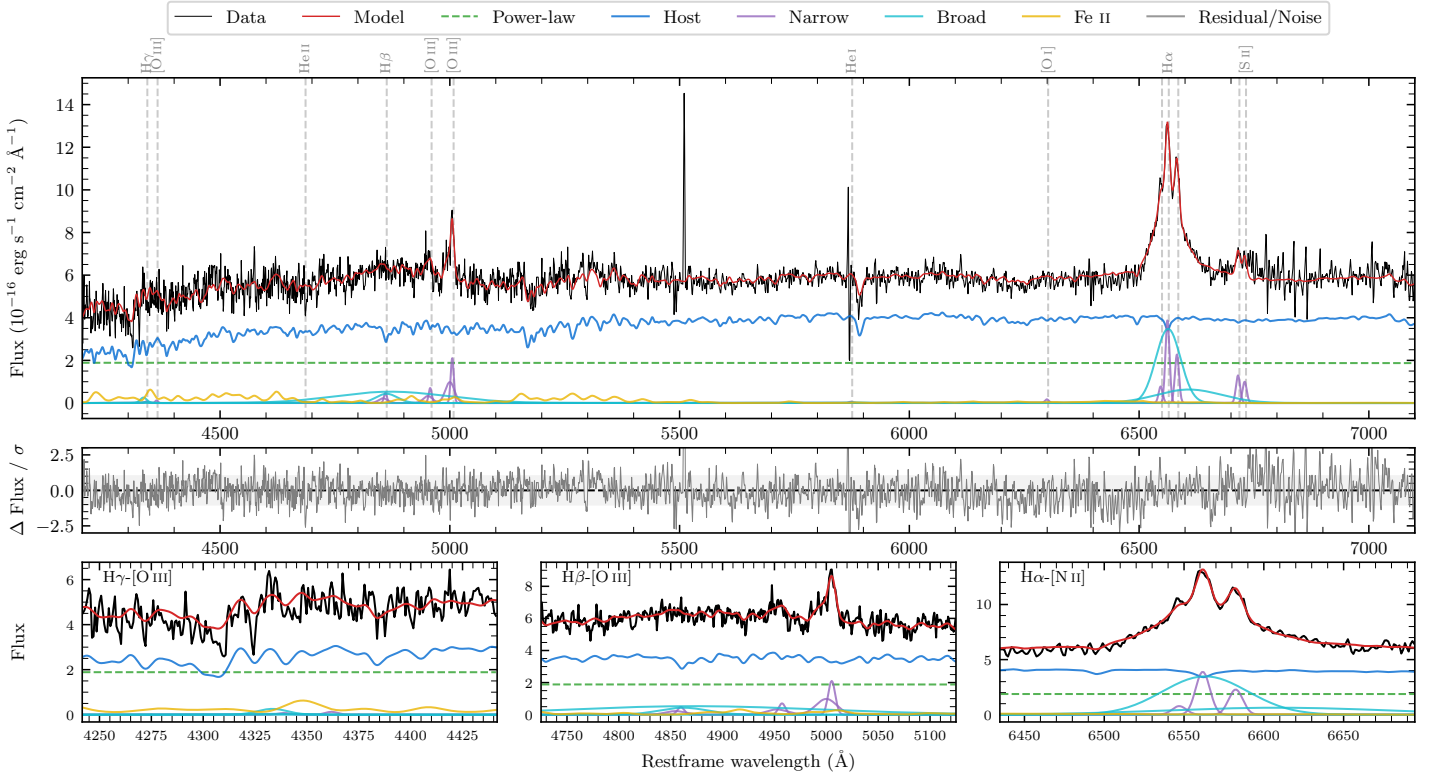
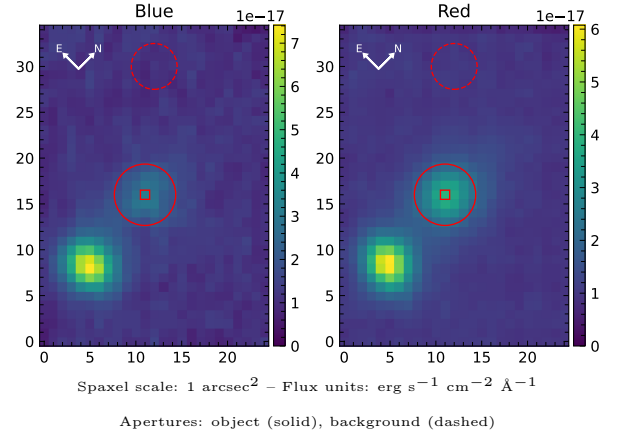


LEDA 548976

Spectrum ID	489997077_sp1	Spectrum type	Sy 1.5+
Alt name	g2218575-432510	Quality flag	good
z	0.0732	AGN reference	6dFGS
RA, Dec	334.7396, -43.4196	MW $E(B - V)$	0.014
MJD	60091.8	Power law α_ν	-1.98 ± 0.02
SNR/ \AA B/R	10.1/18.5	$\log L_{5100, \text{AGN}}$	43.11 ± 0.03
Obs airmass	1.04	$\log H\beta_{\text{Br}}/[\text{O III}]$	< -0.07
SMSS ID	489997077	$\log M_{L5100}/M_\odot$	—
Neighbour	9.9", 489997078	$\log M_{\text{H}\alpha}/M_\odot$	7.32 ± 0.02
SMSS $\langle r_{6'' \text{ap}} \rangle$	16.54 ± 0.03	$\log M_{\text{H}\beta}/M_\odot$	—
2MASS K_{ext}	12.80 ± 0.12	$\log M_{[\text{O III}]} / M_\odot$	—



Emission Line Measurements

Line	$\log L$ (erg s $^{-1}$)	FWHM (km s $^{-1}$)	σ (km s $^{-1}$)	EW (Å)
H γ Narrow	—	—	—	—
Hγ Broad	—	—	—	—
[O III] 4364	—	—	—	—
He II Narrow	—	—	—	—
He II Broad	—	—	—	—
H β Narrow	40.13 ± 0.20	616 ± 81	499 ± 35	5.33 ± 1.42
Hβ Broad	< 40.72	—	—	—
[O III] 5007	40.79 ± 0.04	616 ± 81	500 ± 35	24.24 ± 1.52
He I Narrow	—	—	—	—
He I Broad	—	—	—	—
[O I] 6300	39.43 ± 0.31	480 ± 62	203 ± 25	1.07 ± 0.50
H α Narrow	40.79 ± 0.02	480 ± 62	203 ± 25	24.88 ± 0.65
Hα Broad	41.69 ± 0.01	3158 ± 70	1521 ± 39	197.50 ± 2.60
[N II] 6585	40.56 ± 0.04	480 ± 62	203 ± 25	14.64 ± 0.63
[S II] 6718	40.33 ± 0.05	480 ± 62	203 ± 25	8.49 ± 0.58
[S II] 6732	40.22 ± 0.06	480 ± 62	203 ± 25	6.57 ± 0.73

Emission Summary

H α broad SNR	7.33
H β broad SNR	0.80
H γ broad SNR	0.00
AGN frac	0.36
Host frac	0.64
$\log L_{5100, \text{Host}}$	43.37
Fe II/H β	—
Fe II/[O III]	—

Quality Flags

spurious_hab/hbb	0/2
15100	1
balmer	2
balmer_snr	2
hb_width	2
balmer_width	2