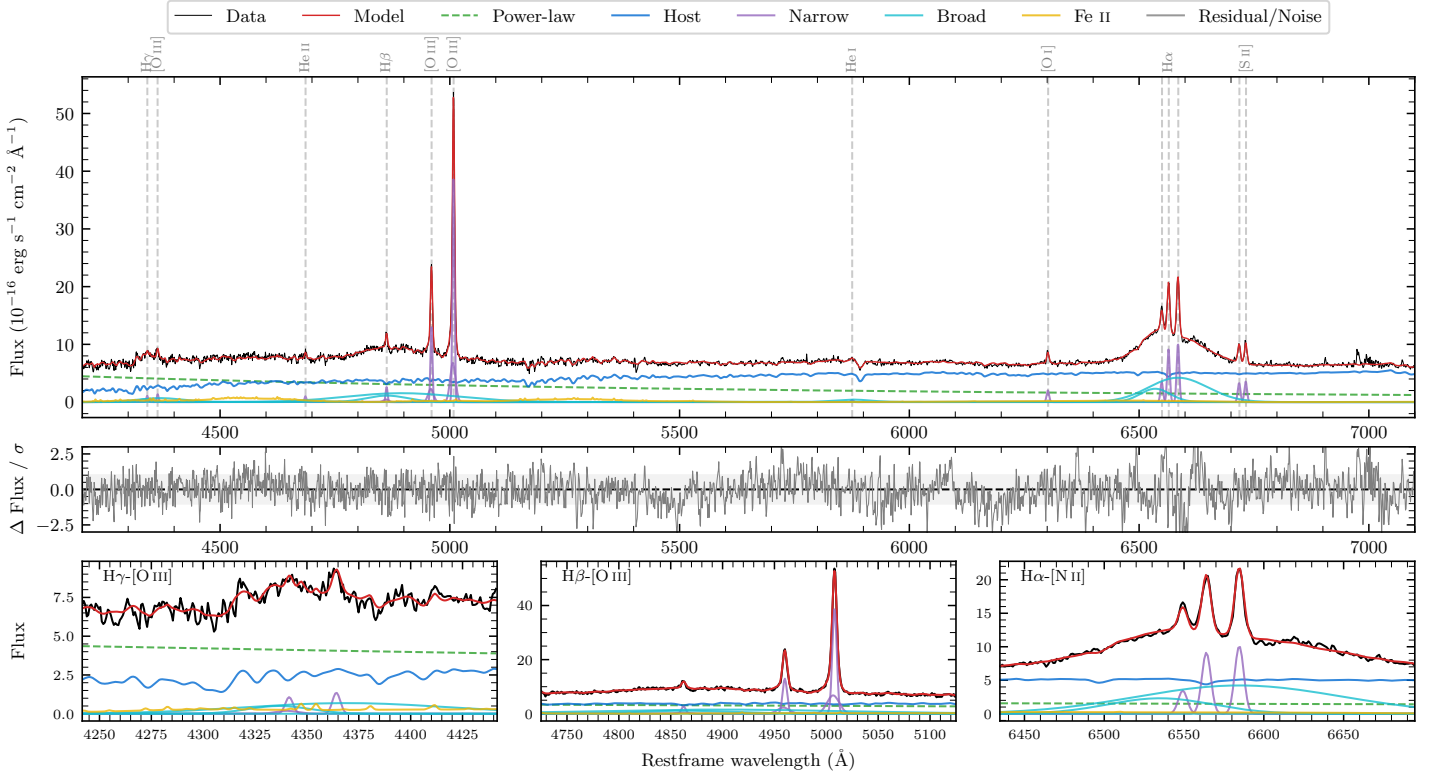
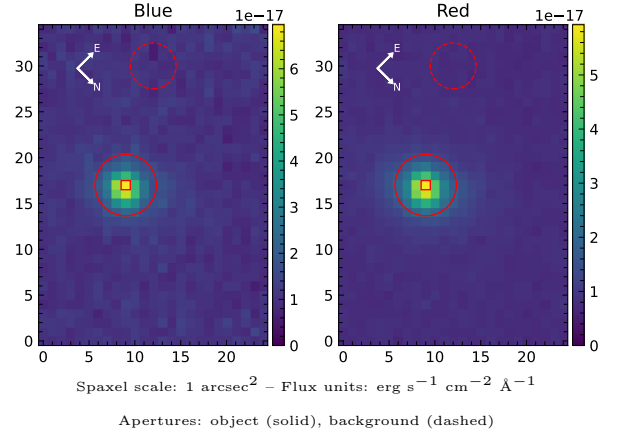


LEDA 3083234

Spectrum ID	489837842_sp1	Spectrum type	Sy 1.5
Alt name	g2222311-462422	Quality flag	good
z	0.0909	AGN reference	6dFGS
RA, Dec	335.6294, -46.4061	MW $E(B - V)$	0.011
MJD	60172.56	Power law α_ν	0.47 ± 0.03
SNR/ \AA B/R	18.9/28.9	$\log L_{5100, \text{AGN}}$	43.47 ± 0.01
Obs airmass	1.07	$\log H\beta_{\text{Br}}/[\text{O III}]$	-0.39 ± 0.36
SMSS ID	489837842	$\log M_{L5100}/M_\odot$	8.30 ± 0.02
Neighbour	None $< 15''$	$\log M_{H\alpha}/M_\odot$	8.32 ± 0.02
SMSS $\langle r_6 \rangle_{\text{ap}}$	16.51 ± 0.06	$\log M_{H\beta}/M_\odot$	8.21 ± 0.17
2MASS K_{ext}	12.63 ± 0.11	$\log M_{[\text{O III}]} / M_\odot$	8.55 ± 0.02



Emission Line Measurements

Line	$\log L$ (erg s $^{-1}$)	FWHM (km s $^{-1}$)	σ (km s $^{-1}$)	EW (Angstroms)
H γ Narrow	40.22 ± 0.12	335 ± 63	229 ± 26	1.95 ± 0.39
Hγ Broad	41.37 ± 0.04	6163 ± 1056	2616 ± 113	27.89 ± 1.32
[O III] 4364	40.16 ± 0.10	307 ± 63	128 ± 25	1.71 ± 0.29
He II Narrow	40.05 ± 0.12	307 ± 63	128 ± 25	1.60 ± 0.27
He II Broad	—	—	—	—
H β Narrow	40.66 ± 0.04	335 ± 63	229 ± 26	7.12 ± 0.49
Hβ Broad	$41.45^{+0.68}_{-0.04}$	6475 ± 136	2418 ± 55	43.87 ± 1.49
[O III] 5007	41.84 ± 0.01	335 ± 63	229 ± 26	115.82 ± 0.64
He I Narrow	39.72 ± 0.15	307 ± 63	128 ± 25	1.30 ± 0.29
He I Broad	40.99 ± 0.04	4809 ± 193	2042 ± 81	24.25 ± 4.20
[O I] 6300	40.49 ± 0.03	307 ± 63	128 ± 25	9.07 ± 0.46
H α Narrow	41.16 ± 0.01	307 ± 63	128 ± 25	47.27 ± 0.51
Hα Broad	42.29 ± 0.01	6576 ± 84	2451 ± 27	640.35 ± 2.49
[N II] 6585	41.21 ± 0.01	307 ± 63	128 ± 25	52.94 ± 0.52
[S II] 6718	40.73 ± 0.02	307 ± 63	128 ± 25	18.55 ± 0.62
[S II] 6732	40.76 ± 0.02	307 ± 63	128 ± 25	20.03 ± 0.60

Emission Summary

H α broad SNR	14.13
H β broad SNR	2.77
H γ broad SNR	2.63
AGN frac	0.43
Host frac	0.57
$\log L_{5100, \text{Host}}$	43.58
Fe II/H β	—
Fe II/[O III]	—

Quality Flags

spurious_hab/hbb	0/2
15100	2
balmer	1
balmer_snr	1
hb_width	0
balmer_width	1