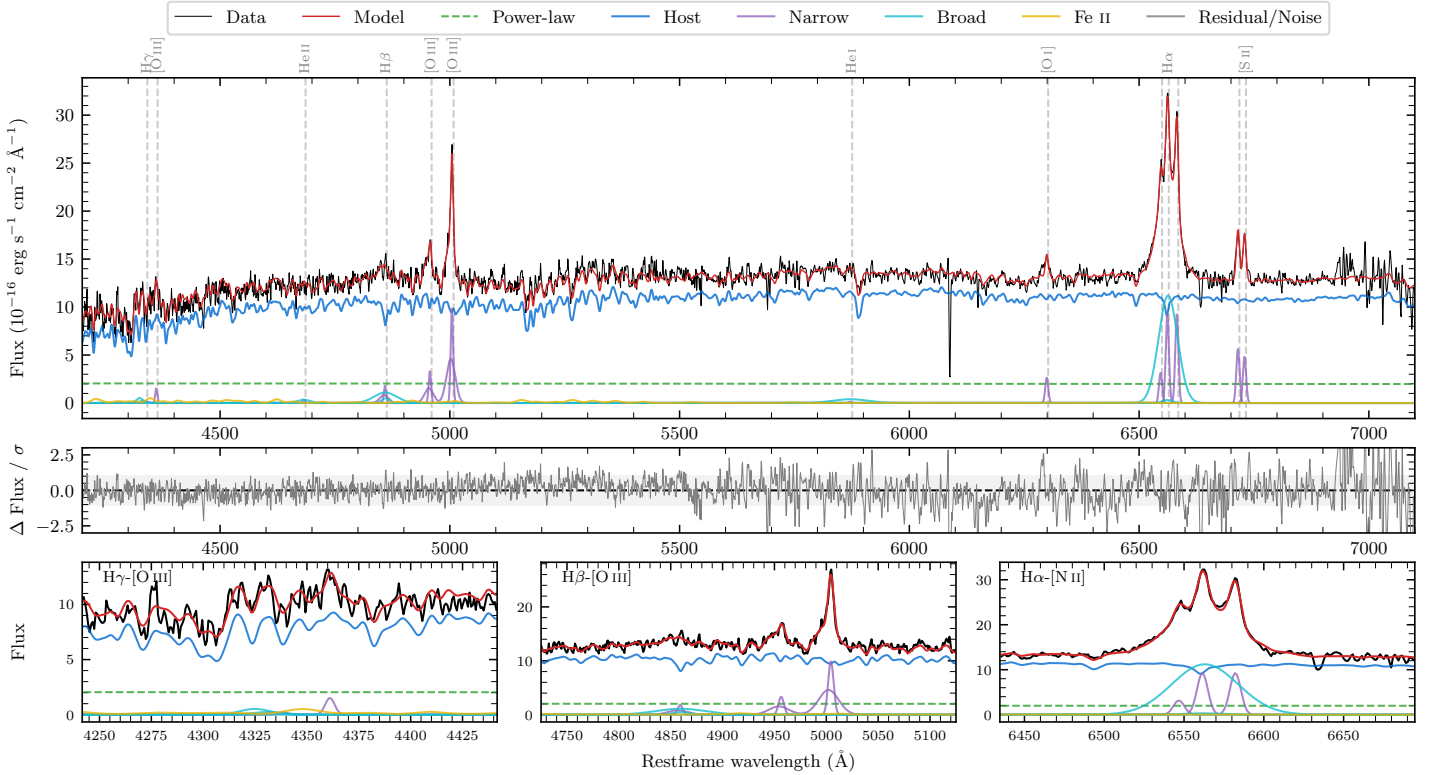
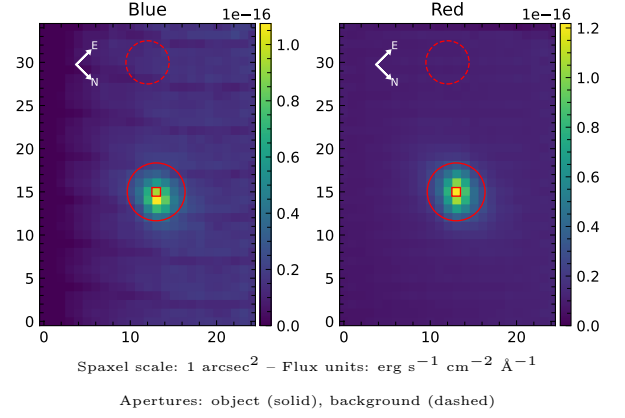


# LEDA 401274

Spectrum ID	489600086_sp1	Spectrum type	Sy 1.5
Alt name	g2335263-561806	Quality flag	good
$z$	0.0341	AGN reference	6dFGS
RA, Dec	353.8594, -56.3018	MW $E(B - V)$	0.013
MJD	60478.81	Power law $\alpha_\nu$	$-1.94 \pm 0.06$
SNR/ $\text{\AA}$ B/R	11.3/26.5	$\log L_{5100, \text{AGN}}$	$42.47 \pm 0.05$
Obs airmass	1.11	$\log H\beta_{\text{Br}}/[\text{O III}]$	$-0.35 \pm 0.11$
SMSS ID	489600086	$\log M_{L5100}/M_\odot$	$7.05 \pm 0.23$
Neighbour	6.1", 2701858900	$\log M_{\text{H}\alpha}/M_\odot$	$6.72 \pm 0.04$
SMSS $\langle r_{6'' \text{ap}} \rangle$	$15.65 \pm 0.03$	$\log M_{\text{H}\beta}/M_\odot$	$6.90 \pm 0.24$
2MASS $K_{\text{ext}}$	$12.29 \pm 0.08$	$\log M_{[\text{O III}]} / M_\odot$	$7.17 \pm 0.23$



## Emission Line Measurements

Line	$\log L$ (erg s <sup>-1</sup> )	FWHM (km s <sup>-1</sup> )	$\sigma$ (km s <sup>-1</sup> )	EW (Å)
H $\gamma$ Narrow	—	—	—	—
<b>H<math>\gamma</math> Broad</b>	—	—	—	—
[O III] 4364	$39.40 \pm 0.26$	$369 \pm 63$	$156 \pm 25$	$4.39 \pm 1.63$
He II Narrow	—	—	—	—
<b>He II Broad</b>	<b><math>39.54 \pm 0.36</math></b>	<b><math>2118 \pm 63</math></b>	<b><math>899 \pm 25</math></b>	<b><math>6.11 \pm 3.20</math></b>
H $\beta$ Narrow	$39.96 \pm 0.15$	$483 \pm 66$	$474 \pm 28$	$15.82 \pm 2.45$
<b>H<math>\beta</math> Broad</b>	<b><math>40.37 \pm 0.10</math></b>	<b><math>2514 \pm 724</math></b>	<b><math>1161 \pm 64</math></b>	<b><math>39.28 \pm 4.01</math></b>
[O III] 5007	$40.71 \pm 0.02$	$483 \pm 66$	$474 \pm 28$	$90.00 \pm 2.46$
He I Narrow	—	—	—	—
<b>He I Broad</b>	<b><math>40.05 \pm 0.10</math></b>	<b><math>4569 \pm 63</math></b>	<b><math>1940 \pm 25</math></b>	<b><math>19.70 \pm 2.50</math></b>
[O I] 6300	$39.80 \pm 0.05$	$369 \pm 63$	$156 \pm 25$	$11.30 \pm 0.73$
H $\alpha$ Narrow	$40.36 \pm 0.02$	$369 \pm 63$	$156 \pm 25$	$41.21 \pm 0.77$
<b>H<math>\alpha</math> Broad</b>	<b><math>41.24 \pm 0.01</math></b>	<b><math>2194 \pm 71</math></b>	<b><math>804 \pm 25</math></b>	<b><math>307.34 \pm 1.89</math></b>
[N II] 6585	$40.36 \pm 0.02$	$369 \pm 63$	$156 \pm 25$	$41.35 \pm 0.77$
[S II] 6718	$40.16 \pm 0.02$	$369 \pm 63$	$156 \pm 25$	$25.86 \pm 0.77$
[S II] 6732	$40.09 \pm 0.02$	$369 \pm 63$	$156 \pm 25$	$22.00 \pm 0.76$

## Emission Summary

H $\alpha$ broad SNR	10.85
H $\beta$ broad SNR	1.56
H $\gamma$ broad SNR	0.83
AGN frac	0.17
Host frac	0.83
$\log L_{5100, \text{Host}}$	43.16
Fe II/H $\beta$	0.79
Fe II/[O III]	0.35

## Quality Flags

spurious_hab/hbb	0/0
15100	2
balmer	1
balmer_snr	2
hb_width	0
balmer_width	0