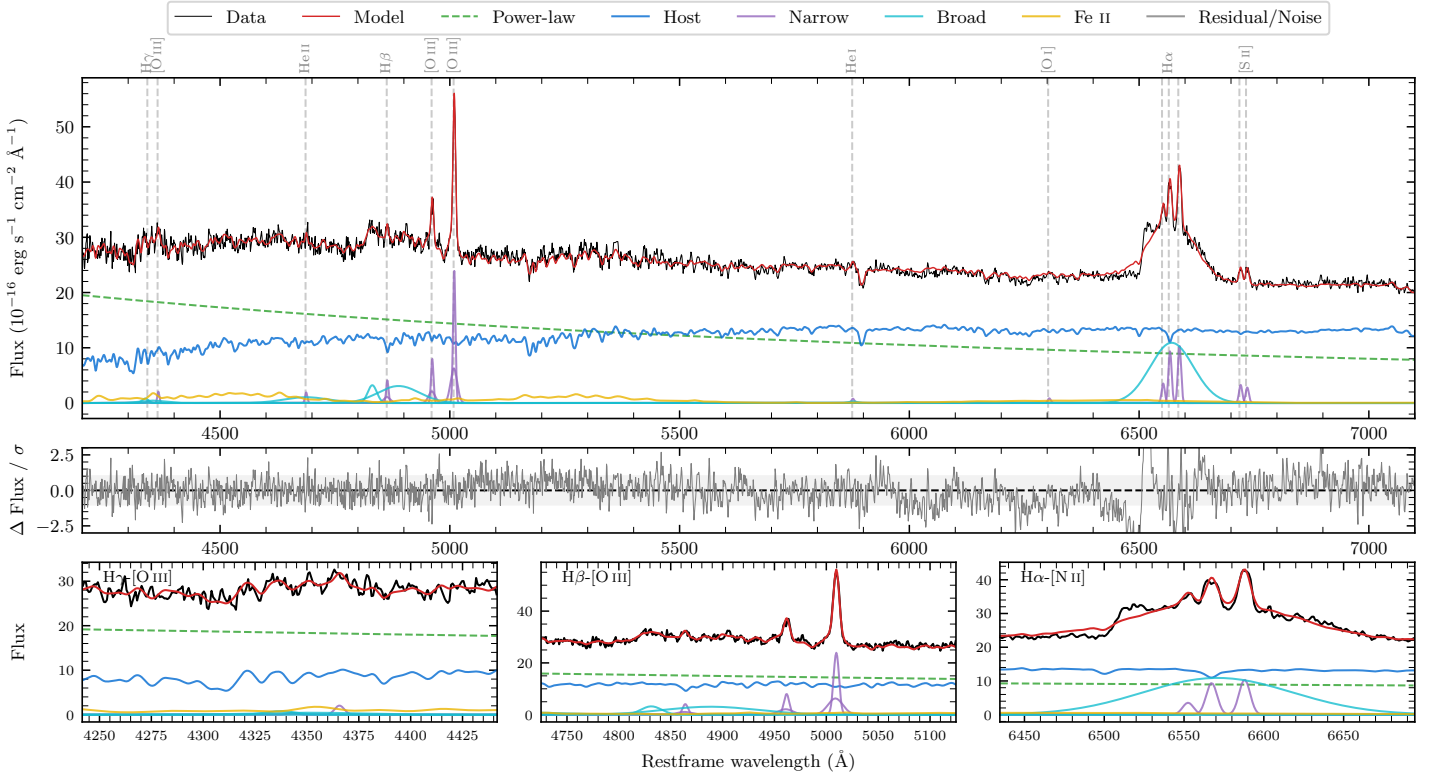
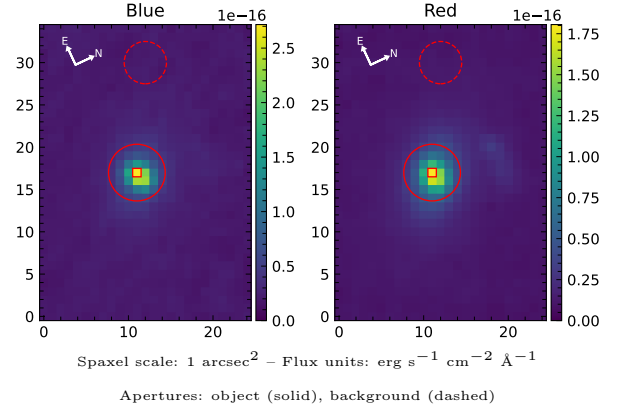


LEDA 101257

Spectrum ID	489287484_sp1	Spectrum type	Sy 1.5
Alt name	g2326376-610602	Quality flag	good
z	0.0404	AGN reference	6dFGS
RA, Dec	351.6566, -61.1003	MW $E(B - V)$	0.015
MJD	60164.68	Power law α_ν	-0.26 ± 0.08
SNR/ \AA B/R	24.2/38.2	$\log L_{5100, \text{AGN}}$	43.43 ± 0.01
Obs airmass	1.15	$\log H\beta_{\text{Br}}/[\text{O III}]$	0.20 ± 0.02
SMSS ID	489287484	$\log M_{L5100}/M_\odot$	8.28 ± 0.05
Neighbour	8.1", 2701384563	$\log M_{\text{H}\alpha}/M_\odot$	7.73 ± 0.02
SMSS $\langle r_6'' \text{ap} \rangle$	14.90 ± 0.17	$\log M_{\text{H}\beta}/M_\odot$	8.10 ± 0.06
2MASS K_{ext}	11.00 ± 0.04	$\log M_{[\text{O III}]} / M_\odot$	8.14 ± 0.05



Emission Line Measurements

Line	$\log L$ (erg s $^{-1}$)	FWHM (km s $^{-1}$)	σ (km s $^{-1}$)	EW (Angstroms)
H γ Narrow	—	—	—	—
Hγ Broad	40.26 ± 0.18	1619 ± 649	1217 ± 159	2.51 ± 0.61
[O III] 4364	39.67 ± 0.22	374 ± 63	158 ± 25	0.67 ± 0.19
He II Narrow	39.67 ± 0.17	374 ± 63	158 ± 25	0.77 ± 0.18
He II Broad	40.70 ± 0.07	7310 ± 66	3104 ± 26	8.27 ± 0.80
H β Narrow	40.25 ± 0.06	428 ± 63	301 ± 28	3.11 ± 0.29
Hβ Broad	41.23 ± 0.02	6441 ± 350	2528 ± 25	29.66 ± 0.79
[O III] 5007	41.03 ± 0.01	428 ± 63	301 ± 28	19.63 ± 0.32
He I Narrow	39.38 ± 0.24	374 ± 63	158 ± 25	0.58 ± 0.16
He I Broad	39.46 ± 0.34	1179 ± 62	501 ± 25	0.70 ± 0.27
[O I] 6300	39.44 ± 0.16	374 ± 63	158 ± 25	0.76 ± 0.17
H α Narrow	40.51 ± 0.02	374 ± 63	158 ± 25	9.45 ± 0.23
Hα Broad	41.70 ± 0.01	5021 ± 73	1864 ± 25	149.03 ± 0.78
[N II] 6585	40.55 ± 0.02	374 ± 63	158 ± 25	10.52 ± 0.23
[S II] 6718	40.06 ± 0.04	374 ± 63	158 ± 25	3.52 ± 0.20
[S II] 6732	39.99 ± 0.05	374 ± 63	158 ± 25	3.04 ± 0.21

Emission Summary

H α broad SNR	9.80
H β broad SNR	4.11
H γ broad SNR	1.14
AGN frac	0.55
Host frac	0.45
$\log L_{5100, \text{Host}}$	43.34
Fe II/H β	1.06
Fe II/[O III]	1.68

Quality Flags

spurious_hab/hbb	0/0
15100	0
balmer	0
balmer_snr	1
hb_width	0
balmer_width	0