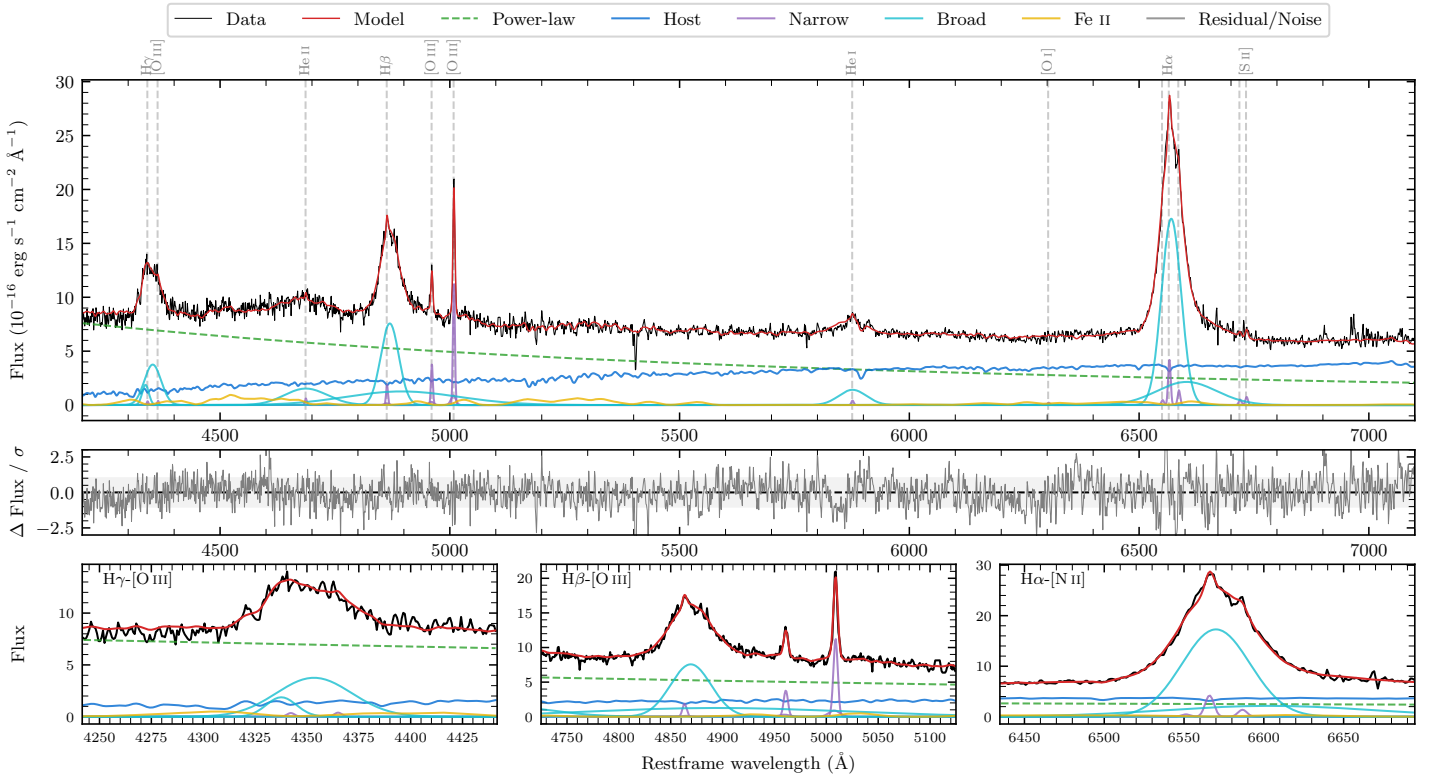
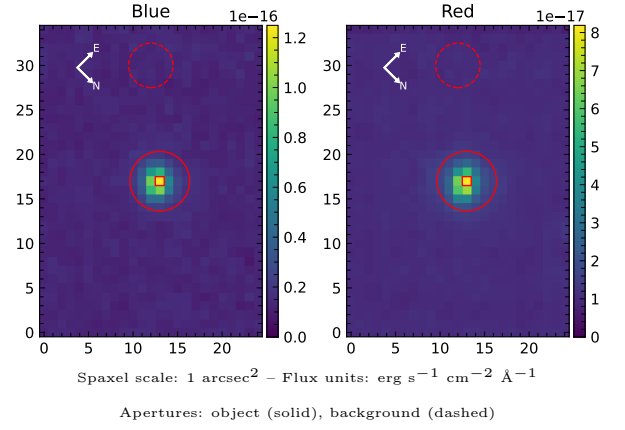


LEDA 346287

| | | | |
|--|--------------------|--|------------------|
| Spectrum ID | 489269212_sp1 | Spectrum type | Sy 1.0 |
| Alt name | g2318514-621923 | Quality flag | good |
| z | 0.0912 | AGN reference | 6dFGS |
| RA, Dec | 349.7140, -62.3229 | MW $E(B - V)$ | 0.020 |
| MJD | 60179.57 | Power law α_ν | 0.48 ± 0.02 |
| SNR/ \AA B/R | 16.9/21.2 | $\log L_{5100, \text{AGN}}$ | 43.70 ± 0.01 |
| Obs airmass | 1.22 | $\log H\beta_{\text{Br}}/[\text{O III}]$ | 0.72 ± 0.17 |
| SMSS ID | 489269212 | $\log M_{L5100}/M_\odot$ | 7.68 ± 0.01 |
| Neighbour | None $< 15''$ | $\log M_{H\alpha}/M_\odot$ | 7.57 ± 0.03 |
| SMSS $\langle r_6 \rangle_{\text{ap}}$ | 16.66 ± 0.14 | $\log M_{H\beta}/M_\odot$ | 7.71 ± 0.08 |
| 2MASS K_{ext} | 13.36 ± 0.08 | $\log M_{[\text{O III}]} / M_\odot$ | 7.52 ± 0.02 |



Emission Line Measurements

| Line | $\log L$ (erg s ⁻¹) | FWHM (km s ⁻¹) | σ (km s ⁻¹) | EW (Å) |
|-----------------------------------|---|----------------------------------|---------------------------------|-------------------------------------|
| H γ Narrow | 39.65 ± 0.41 | 311 ± 63 | 173 ± 31 | 0.30 ± 0.28 |
| Hγ Broad | 41.67 ± 0.02 | 2938 ± 117 | 1017 ± 25 | 32.17 ± 0.62 |
| [O III] 4364 | 39.62 ± 0.38 | 295 ± 63 | 125 ± 25 | 0.29 ± 0.19 |
| He II Narrow | 39.84 ± 0.24 | 295 ± 63 | 125 ± 25 | 0.57 ± 0.20 |
| He II Broad | — | — | — | — |
| H β Narrow | 40.42 ± 0.09 | 311 ± 63 | 173 ± 31 | 2.36 ± 0.37 |
| Hβ Broad | $41.93^{+0.31}_{-0.01}$ | 2843 ± 36 | 1041 ± 25 | 77.09 ± 0.76 |
| [O III] 5007 | 41.21 ± 0.02 | 311 ± 63 | 173 ± 31 | 15.81 ± 0.66 |
| He I Narrow | 39.77 ± 0.21 | 295 ± 63 | 125 ± 25 | 0.85 ± 0.23 |
| He I Broad | 41.39 ± 0.02 | 3601 ± 69 | 1529 ± 28 | 35.11 ± 0.91 |
| [O I] 6300 | 39.53 ± 0.30 | 295 ± 63 | 125 ± 25 | 0.58 ± 0.31 |
| H α Narrow | 40.82 ± 0.03 | 295 ± 63 | 125 ± 25 | 12.57 ± 0.45 |
| Hα Broad | 42.46 ± 0.01 | 2458 ± 63 | 1147 ± 25 | 557.02 ± 1.84 |
| [N II] 6585 | 40.34 ± 0.08 | 295 ± 63 | 125 ± 25 | 4.17 ± 0.44 |
| [S II] 6718 | 39.92 ± 0.16 | 295 ± 63 | 125 ± 25 | 1.68 ± 0.42 |
| [S II] 6732 | 40.08 ± 0.10 | 295 ± 63 | 125 ± 25 | 2.46 ± 0.42 |

Emission Summary

| | |
|------------------------------|-------|
| H α broad SNR | 38.25 |
| H β broad SNR | 15.11 |
| H γ broad SNR | 9.30 |
| AGN frac | 0.67 |
| Host frac | 0.33 |
| $\log L_{5100, \text{Host}}$ | 43.39 |
| Fe II/H β | — |
| Fe II/[O III] | — |

Quality Flags

| | |
|------------------|-----|
| spurious_hab/hbb | 0/1 |
| 15100 | 2 |
| balmer | 0 |
| balmer_snr | 0 |
| hb_width | 0 |
| balmer_width | 0 |