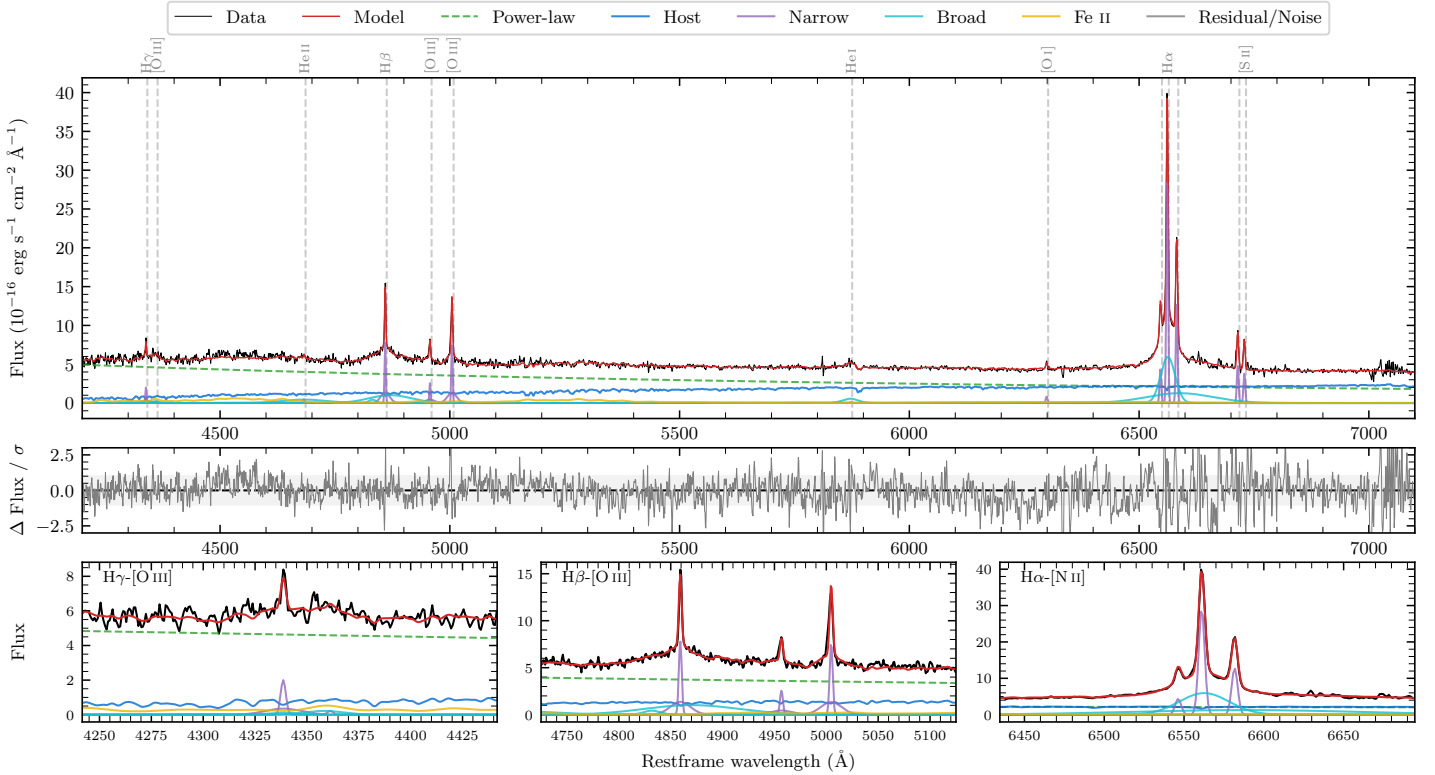
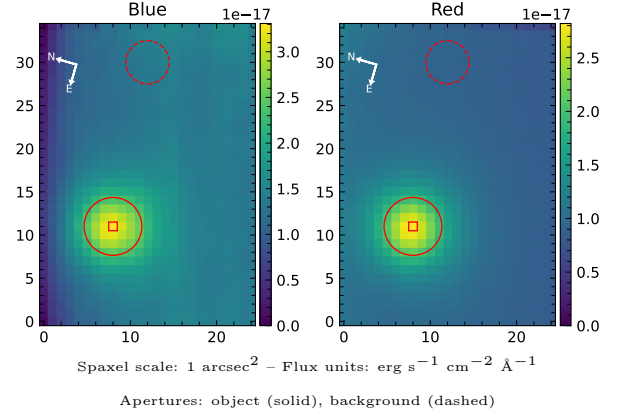


LEDA 89182

Spectrum ID	488840395_sp1	Spectrum type	Sy 1.2
Alt name	g2202552-565938	Quality flag	good
z	0.0834	AGN reference	6dFGS
RA, Dec	330.7300, -56.9937	MW $E(B - V)$	0.022
MJD	59439.54	Power law α_ν	-0.09 ± 0.10
SNR/ \AA B/R	14.0/24.5	$\log L_{5100, \text{AGN}}$	43.48 ± 0.01
Obs airmass	1.18	$\log H\beta_{\text{Br}}/[\text{O III}]$	0.31 ± 0.03
SMSS ID	488840395	$\log M_{L5100}/M_\odot$	8.28 ± 0.05
Neighbour	None $< 15''$	$\log M_{\text{H}\alpha}/M_\odot$	7.04 ± 0.03
SMSS $\langle r_6''_{\text{ap}} \rangle$	16.10 ± 0.04	$\log M_{\text{H}\beta}/M_\odot$	8.15 ± 0.06
2MASS K_{ext}	12.50 ± 0.10	$\log M_{[\text{O III}]} / M_\odot$	8.14 ± 0.06



Emission Line Measurements

Line	$\log L$ (erg s^{-1})	FWHM (km s^{-1})	σ (km s^{-1})	EW (\AA)
H γ Narrow	40.42 ± 0.08	236 ± 63	447 ± 27	3.26 ± 0.47
Hγ Broad	—	—	—	—
[O III] 4364	—	—	—	—
He II Narrow	39.50 ± 0.28	207 ± 62	87 ± 25	0.45 ± 0.18
He II Broad	41.01 ± 0.06	7136 ± 89	3030 ± 37	14.41 ± 1.13
H β Narrow	41.06 ± 0.02	236 ± 63	447 ± 27	17.67 ± 0.53
Hβ Broad	41.38 ± 0.03	6283 ± 373	2436 ± 36	36.59 ± 1.19
[O III] 5007	41.07 ± 0.02	236 ± 63	447 ± 27	18.85 ± 0.61
He I Narrow	—	—	—	—
He I Broad	40.65 ± 0.04	2034 ± 92	864 ± 38	9.90 ± 0.50
[O I] 6300	39.86 ± 0.08	207 ± 62	87 ± 25	1.82 ± 0.19
H α Narrow	41.42 ± 0.01	207 ± 62	87 ± 25	71.29 ± 0.24
Hα Broad	41.94 ± 0.01	1916 ± 65	1508 ± 25	238.83 ± 1.32
[N II] 6585	41.06 ± 0.01	207 ± 62	87 ± 25	31.55 ± 0.21
[S II] 6718	40.65 ± 0.02	207 ± 62	87 ± 25	12.64 ± 0.30
[S II] 6732	40.55 ± 0.02	207 ± 62	87 ± 25	10.05 ± 0.24

Emission Summary

H α broad SNR	19.76
H β broad SNR	3.24
H γ broad SNR	0.77
AGN frac	0.71
Host frac	0.29
$\log L_{5100, \text{Host}}$	43.10
Fe II/H β	1.11
Fe II/[O III]	2.28

Quality Flags

spurious_hab/hbb	0/0
15100	0
balmer	0
balmer_snr	2
hb_width	0
balmer_width	1