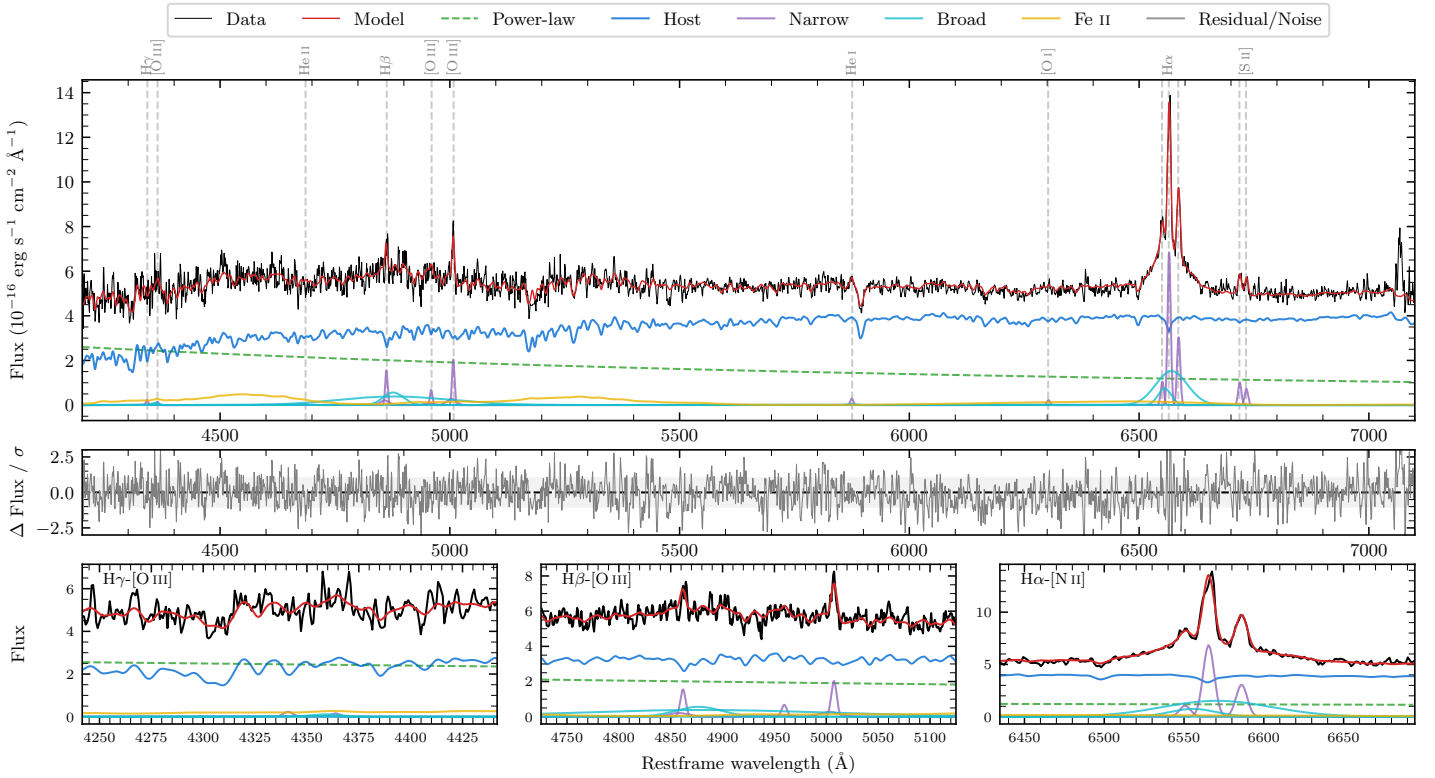
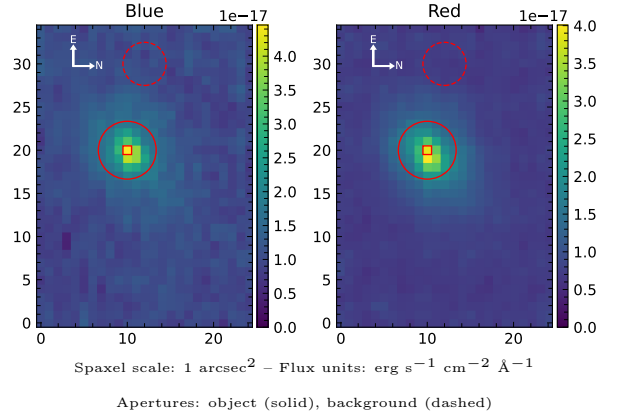


# LEDA 597525

Spectrum ID	488469020_sp1	Spectrum type	Sy 1.5
Alt name	g2129028-392954	Quality flag	good
$z$	0.0765	AGN reference	6dFGS
RA, Dec	322.2619, -39.4982	MW $E(B - V)$	0.026
MJD	60167.56	Power law $\alpha_\nu$	$-0.24 \pm 0.23$
SNR/ $\text{\AA}$ B/R	14.9/25.7	$\log L_{5100, \text{AGN}}$	$43.13 \pm 0.04$
Obs airmass	1.03	$\log H\beta_{\text{Br}}/[\text{O III}]$	$0.18 \pm 0.39$
SMSS ID	488469020	$\log M_{L5100}/M_\odot$	$7.53 \pm 0.03$
Neighbour	None $< 15''$	$\log M_{\text{H}\alpha}/M_\odot$	$7.09 \pm 0.04$
SMSS $\langle r_6 \rangle_{\text{ap}}$	$16.64 \pm 0.03$	$\log M_{\text{H}\beta}/M_\odot$	$7.24 \pm 0.19$
2MASS $K_{\text{ext}}$	$12.52 \pm 0.10$	$\log M_{[\text{O III}]} / M_\odot$	$7.27 \pm 0.06$



## Emission Line Measurements

Line	$\log L$ ( $\text{erg s}^{-1}$ )	FWHM ( $\text{km s}^{-1}$ )	$\sigma$ ( $\text{km s}^{-1}$ )	EW ( $\text{\AA}$ )
H $\gamma$ Narrow	$39.49 \pm 0.35$	$405 \pm 65$	$385 \pm 60$	$0.88 \pm 0.78$
<b>H<math>\gamma</math> Broad</b>	—	—	—	—
[O III] 4364	—	—	—	—
He II Narrow	—	—	—	—
<b>He II Broad</b>	—	—	—	—
H $\beta$ Narrow	$40.37 \pm 0.08$	$405 \pm 65$	$386 \pm 59$	$8.12 \pm 0.92$
<b>H<math>\beta</math> Broad</b>	$40.68^{+0.68}_{-0.08}$	<b><math>3168 \pm 27</math></b>	<b><math>1118 \pm 25</math></b>	<b><math>16.69 \pm 1.45</math></b>
[O III] 5007	$40.50 \pm 0.06$	$405 \pm 65$	$386 \pm 60$	$11.52 \pm 1.00$
He I Narrow	$39.55 \pm 0.20$	$376 \pm 63$	$158 \pm 25$	$1.71 \pm 0.40$
<b>He I Broad</b>	<b><math>39.29 \pm 0.45</math></b>	<b><math>1187 \pm 63</math></b>	<b><math>504 \pm 25</math></b>	<b><math>0.93 \pm 0.77</math></b>
[O I] 6300	$39.47 \pm 0.19$	$376 \pm 63$	$158 \pm 25$	$1.60 \pm 0.42$
H $\alpha$ Narrow	$40.96 \pm 0.01$	$376 \pm 63$	$158 \pm 25$	$54.06 \pm 0.58$
<b>H<math>\alpha</math> Broad</b>	<b><math>41.39 \pm 0.01</math></b>	<b><math>2995 \pm 127</math></b>	<b><math>1240 \pm 25</math></b>	<b><math>143.83 \pm 1.78</math></b>
[N II] 6585	$40.62 \pm 0.02$	$376 \pm 63$	$158 \pm 25$	$24.45 \pm 0.55$
[S II] 6718	$40.15 \pm 0.05$	$376 \pm 63$	$158 \pm 25$	$8.52 \pm 0.65$
[S II] 6732	$40.01 \pm 0.08$	$376 \pm 63$	$158 \pm 25$	$6.23 \pm 0.67$

## Emission Summary

H $\alpha$ broad SNR	6.13
H $\beta$ broad SNR	1.60
H $\gamma$ broad SNR	0.52
AGN frac	0.37
Host frac	0.63
$\log L_{5100, \text{Host}}$	43.37
Fe II/H $\beta$	—
Fe II/[O III]	—

## Quality Flags

spurious_hab/hbb	0/2
15100	1
balmer	1
balmer_snr	2
hb_width	0
balmer_width	0