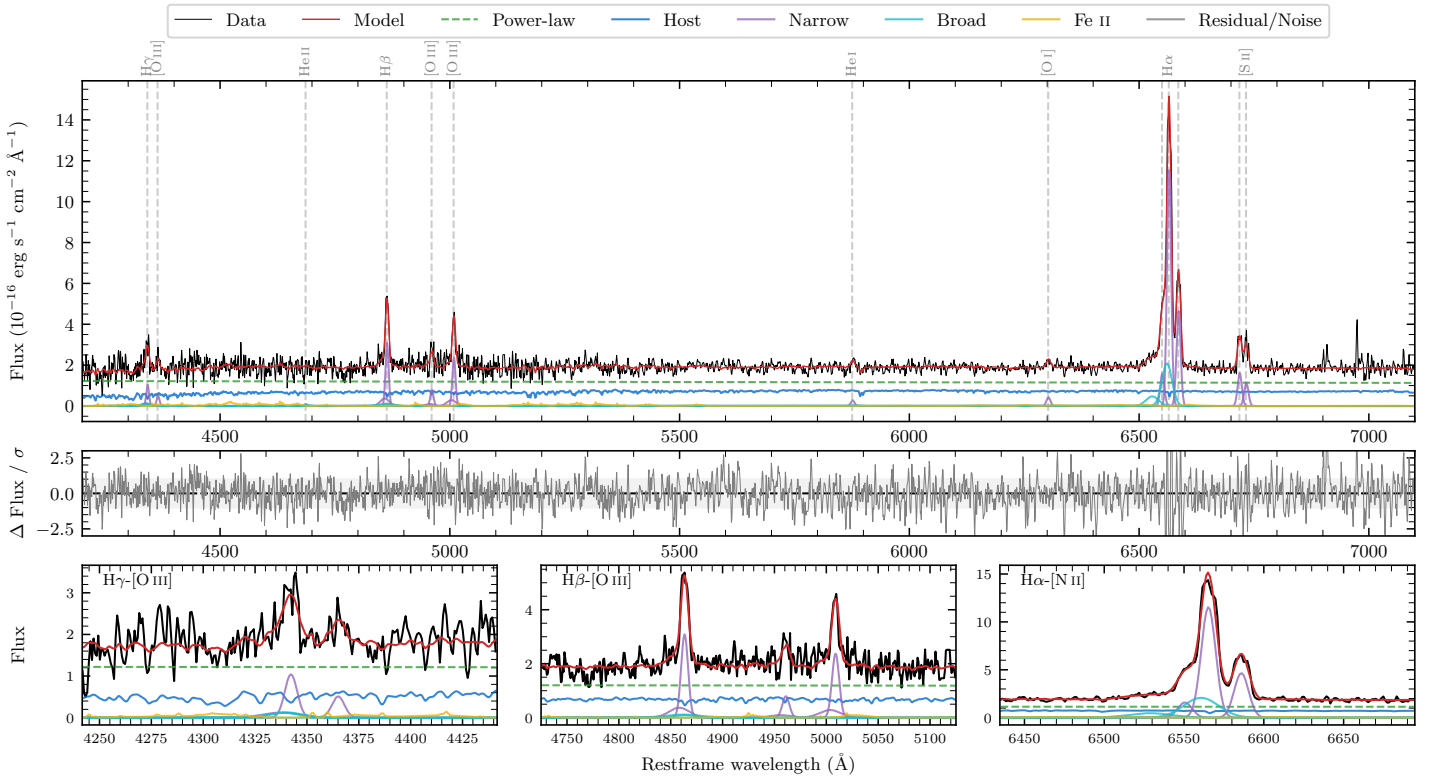
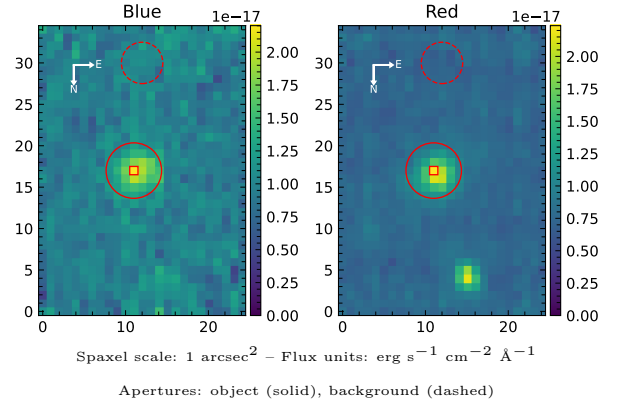


LEDA 537038

Spectrum ID	488425522_sp1	Spectrum type	SF
Alt name	g2150248-442750	Quality flag	good
z	0.0906	AGN reference	6dFGS
RA, Dec	327.6032, -44.4639	MW $E(B - V)$	0.013
MJD	60168.6	Power law α_ν	-1.85 ± 0.13
SNR/ \AA B/R	5.5/9.9	$\log L_{5100, \text{AGN}}$	43.09 ± 0.03
Obs airmass	1.03	$\log H\beta_{\text{Br}}/[\text{O III}]$	—
SMSS ID	488425522	$\log M_{L5100}/M_\odot$	—
Neighbour	10.3", 488425521	$\log M_{\text{H}\alpha}/M_\odot$	—
SMSS $\langle r_6^{\text{ap}} \rangle$	16.25 ± 0.03	$\log M_{\text{H}\beta}/M_\odot$	—
2MASS K_{ext}	12.32 ± 0.06	$\log M_{[\text{O III}]} / M_\odot$	—



Emission Line Measurements

Line	$\log L$ (erg s^{-1})	FWHM (km s^{-1})	σ (km s^{-1})	EW (\AA)
H γ Narrow	40.37 ± 0.14	519 ± 64	381 ± 48	9.43 ± 1.63
Hγ Broad	—	—	—	—
[O III] 4364	39.93 ± 0.19	486 ± 63	206 ± 25	3.45 ± 0.97
He II Narrow	—	—	—	—
He II Broad	—	—	—	—
H β Narrow	40.89 ± 0.05	519 ± 64	381 ± 48	31.82 ± 1.54
Hβ Broad	—	—	—	—
[O III] 5007	40.79 ± 0.04	519 ± 64	381 ± 48	25.36 ± 1.62
He I Narrow	39.80 ± 0.18	486 ± 63	206 ± 25	2.68 ± 0.55
He I Broad	—	—	—	—
[O I] 6300	40.02 ± 0.12	486 ± 63	206 ± 25	4.40 ± 0.63
H α Narrow	41.60 ± 0.01	486 ± 63	206 ± 25	124.49 ± 0.70
Hα Broad	—	—	—	—
[N II] 6585	41.21 ± 0.01	486 ± 63	206 ± 25	50.35 ± 0.67
[S II] 6718	40.62 ± 0.03	486 ± 63	206 ± 25	17.92 ± 0.75
[S II] 6732	40.47 ± 0.04	486 ± 63	206 ± 25	12.79 ± 0.74

Emission Summary

H α broad SNR	0.00
H β broad SNR	0.00
H γ broad SNR	0.00
AGN frac	0.65
Host frac	0.35
$\log L_{5100, \text{Host}}$	42.82
Fe II/H β	—
Fe II/[O III]	0.81

Quality Flags

spurious_hab/hbb	1/0
15100	0
balmer	2
balmer_snr	2
hb_width	2
balmer_width	2