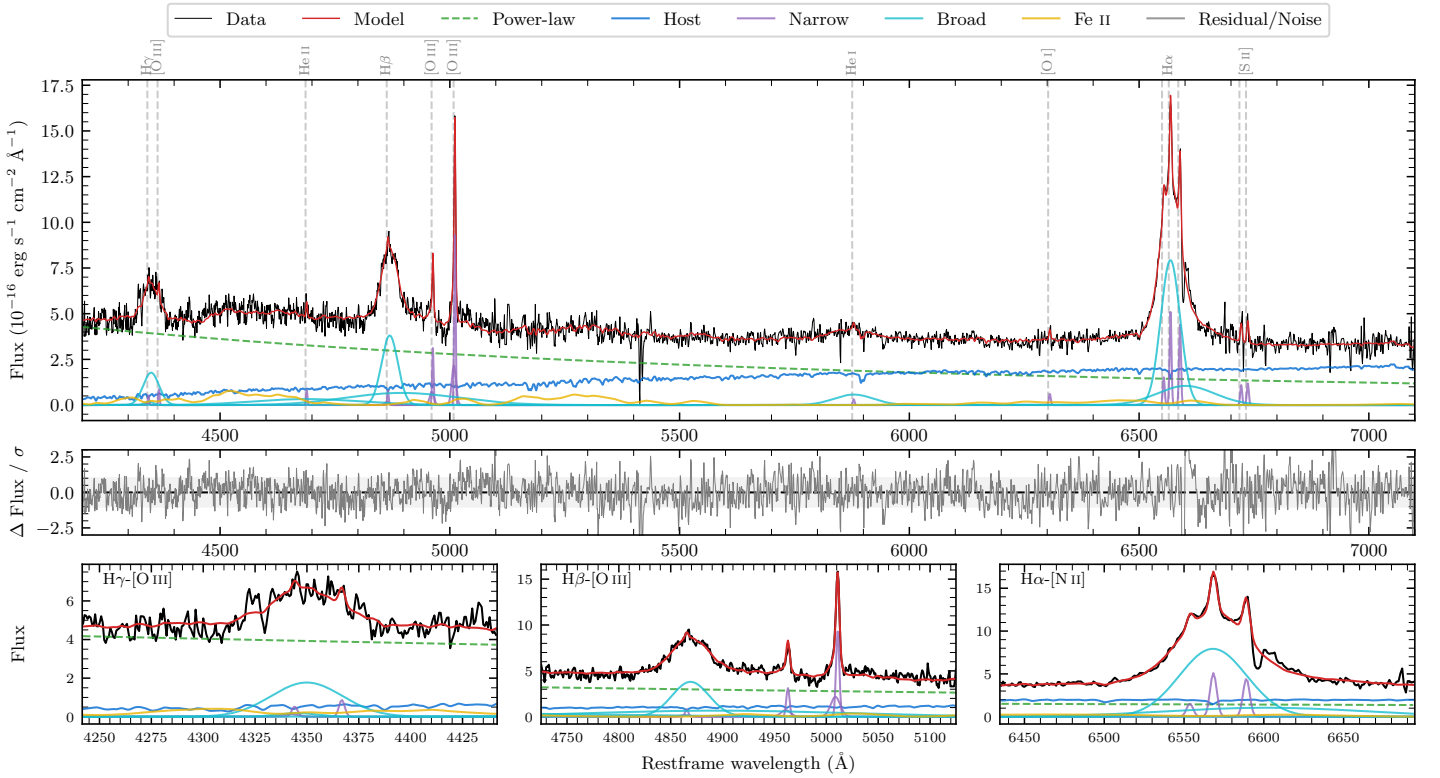
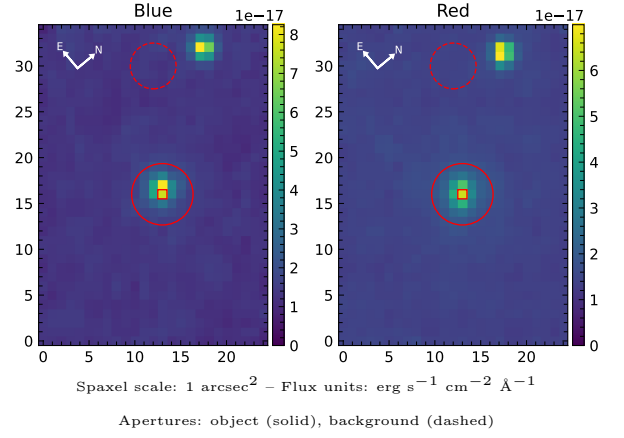


LEDA 507799

Spectrum ID	488376126_sp1	Spectrum type	Sy 1.2
Alt name	g2137428-470035	Quality flag	good
z	0.0884	AGN reference	6dFGS
RA, Dec	324.4285, -47.0095	MW $E(B - V)$	0.023
MJD	60087.79	Power law α_ν	0.45 ± 0.05
SNR/ \AA B/R	10.9/14.0	$\log L_{5100, \text{AGN}}$	43.42 ± 0.01
Obs airmass	1.05	$\log H\beta_{\text{Br}}/[\text{O III}]$	0.44 ± 0.18
SMSS ID	488376126	$\log M_{L5100}/M_\odot$	7.48 ± 0.02
Neighbour	None $< 15''$	$\log M_{\text{H}\alpha}/M_\odot$	7.33 ± 0.02
SMSS $\langle r_6''_{\text{ap}} \rangle$	17.30 ± 0.10	$\log M_{\text{H}\beta}/M_\odot$	7.46 ± 0.10
2MASS K_{ext}	13.49 ± 0.14	$\log M_{[\text{O III}]} / M_\odot$	7.39 ± 0.03



Emission Line Measurements

Line	$\log L$ (erg s ⁻¹)	FWHM (km s ⁻¹)	σ (km s ⁻¹)	EW (Å)
H γ Narrow	39.81 ± 0.26	258 ± 63	202 ± 29	0.85 ± 0.40
Hγ Broad	41.25 ± 0.03	2697 ± 161	978 ± 45	22.38 ± 0.89
[O III] 4364	39.81 ± 0.20	228 ± 63	95 ± 25	0.85 ± 0.24
He II Narrow	39.81 ± 0.17	228 ± 63	95 ± 25	1.02 ± 0.26
He II Broad	—	—	—	—
H β Narrow	40.04 ± 0.17	258 ± 63	202 ± 29	1.89 ± 0.51
Hβ Broad	$41.55^{+0.34}_{-0.02}$	2583 ± 60	945 ± 29	62.10 ± 1.09
[O III] 5007	41.12 ± 0.02	258 ± 63	202 ± 29	24.36 ± 0.64
He I Narrow	39.50 ± 0.24	228 ± 63	95 ± 25	0.87 ± 0.37
He I Broad	41.12 ± 0.03	5148 ± 148	2186 ± 62	35.87 ± 1.62
[O I] 6300	39.82 ± 0.11	228 ± 63	95 ± 25	2.15 ± 0.44
H α Narrow	40.75 ± 0.02	228 ± 63	95 ± 25	20.27 ± 0.49
Hα Broad	42.09 ± 0.01	2434 ± 66	1136 ± 29	444.32 ± 2.90
[N II] 6585	40.69 ± 0.02	228 ± 63	95 ± 25	17.90 ± 0.53
[S II] 6718	40.10 ± 0.08	228 ± 63	95 ± 25	4.75 ± 0.68
[S II] 6732	40.13 ± 0.08	228 ± 63	95 ± 25	5.18 ± 0.55

Emission Summary

H α broad SNR	20.66
H β broad SNR	8.89
H γ broad SNR	4.64
AGN frac	0.70
Host frac	0.30
$\log L_{5100, \text{Host}}$	43.05
Fe II/H β	—
Fe II/[O III]	—

Quality Flags

spurious_hab/hbb	0/2
15100	2
balmer	0
balmer_snr	0
hb_width	0
balmer_width	0