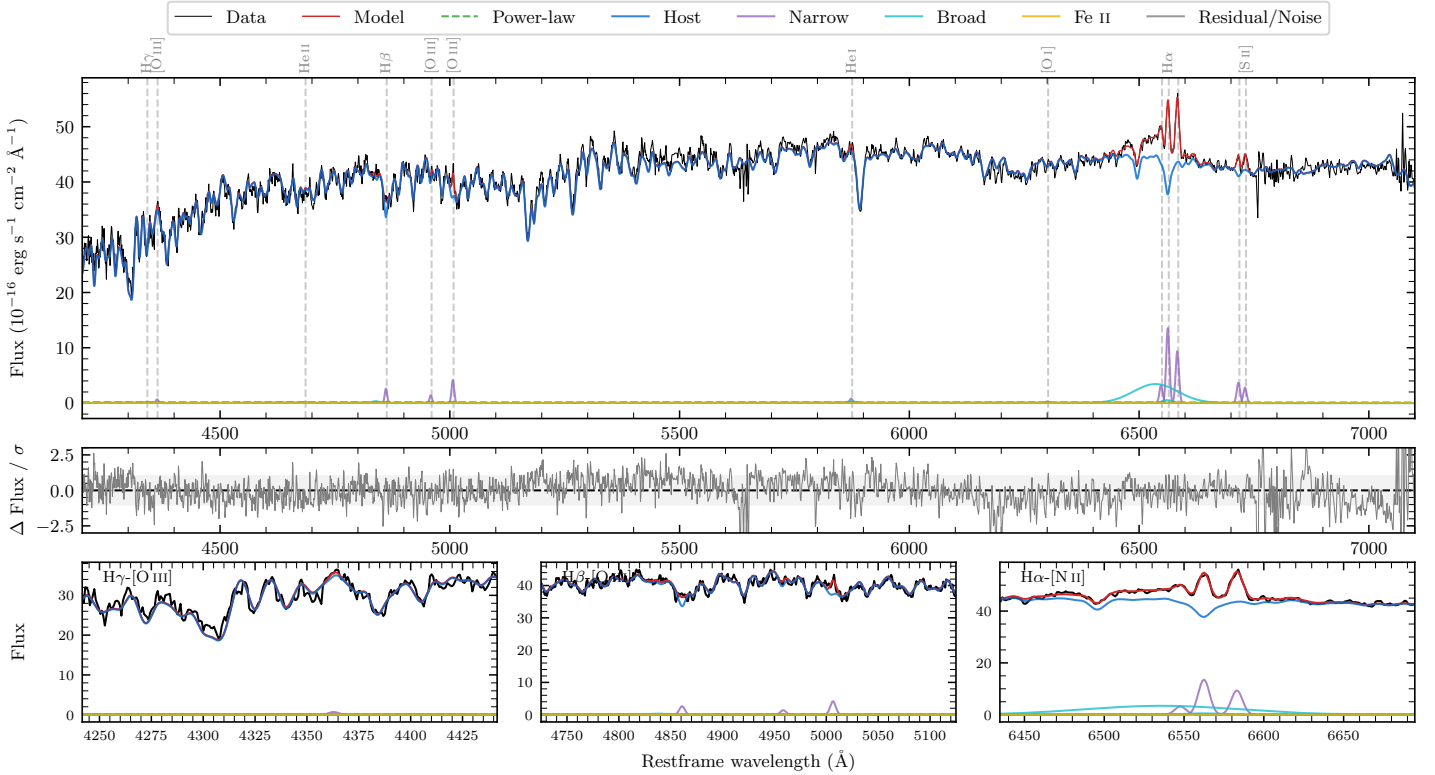
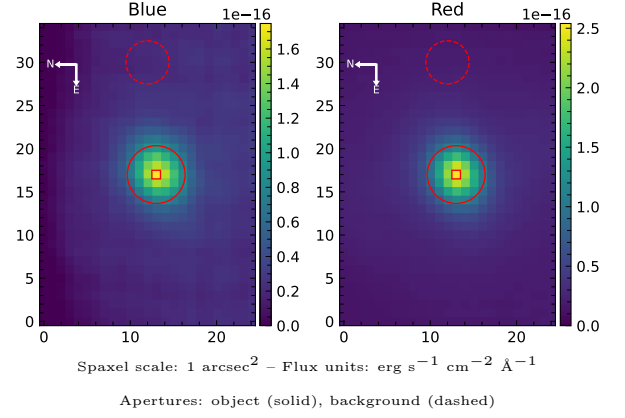


NGC 7060

Spectrum ID	488336200_sp1	Spectrum type	Sy 1.2+
Alt name	g2125536-422441	Quality flag	good
z	0.0160	AGN reference	6dFGS
RA, Dec	321.4733, -42.4112	MW $E(B - V)$	0.029
MJD	60437.8	Power law α_ν	-1.25 ± 0.04
SNR/ \AA B/R	29.3/48.1	$\log L_{5100, \text{AGN}}$	40.56 ± 0.66
Obs airmass	1.06	$\log H\beta_{\text{Br}}/[\text{O III}]$	< 0.40
SMSS ID	488336200	$\log M_{L5100}/M_\odot$	—
Neighbour	None $< 15''$	$\log M_{\text{H}\alpha}/M_\odot$	6.94 ± 0.07
SMSS $\langle r_6'' \text{ap} \rangle$	14.43 ± 0.05	$\log M_{\text{H}\beta}/M_\odot$	—
2MASS K_{ext}	9.64 ± 0.03	$\log M_{[\text{O III}]} / M_\odot$	—



Emission Line Measurements

Line	$\log L$ (erg s $^{-1}$)	FWHM (km s $^{-1}$)	σ (km s $^{-1}$)	EW (\AA)
H γ Narrow	—	—	—	—
Hγ Broad	—	—	—	—
[O III] 4364	38.39 ± 0.39	379 ± 62	160 ± 25	30.46 ± 26.96
He II Narrow	—	—	—	—
He II Broad	—	—	—	—
H β Narrow	39.04 ± 0.14	384 ± 63	208 ± 50	146.61 ± 44.17
Hβ Broad	< 39.66	—	—	—
[O III] 5007	39.26 ± 0.08	384 ± 63	208 ± 50	245.38 ± 43.07
He I Narrow	38.59 ± 0.31	379 ± 62	160 ± 25	60.60 ± 23.14
He I Broad	38.71 ± 0.40	1319 ± 62	560 ± 25	79.03 ± 43.35
[O I] 6300	—	—	—	—
H α Narrow	39.86 ± 0.02	379 ± 62	160 ± 25	1212.00 ± 26.02
Hα Broad	40.41 ± 0.02	5039 ± 186	1826 ± 26	4357.94 ± 97.09
[N II] 6585	39.70 ± 0.02	379 ± 62	160 ± 25	843.05 ± 25.94
[S II] 6718	39.30 ± 0.06	379 ± 62	160 ± 25	342.70 ± 27.42
[S II] 6732	39.18 ± 0.07	379 ± 62	160 ± 25	262.52 ± 27.25

Emission Summary

H α broad SNR	2.67
H β broad SNR	0.48
H γ broad SNR	0.00
AGN frac	0.00
Host frac	1.00
$\log L_{5100, \text{Host}}$	43.07
Fe II/H β	—
Fe II/[O III]	—

Quality Flags

spurious_hab/hbb	0/0
15100	2
balmer	2
balmer_snr	2
hb_width	2
balmer_width	2