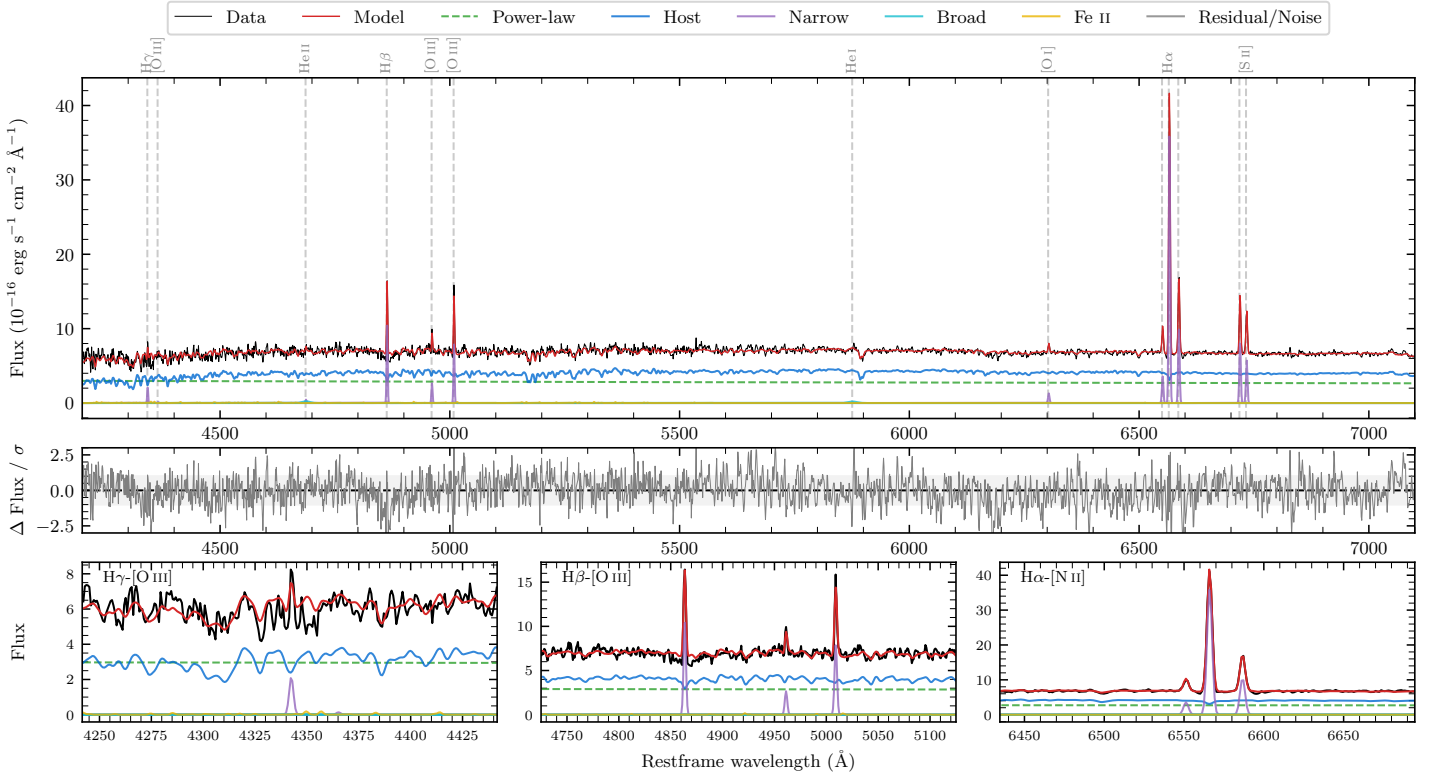
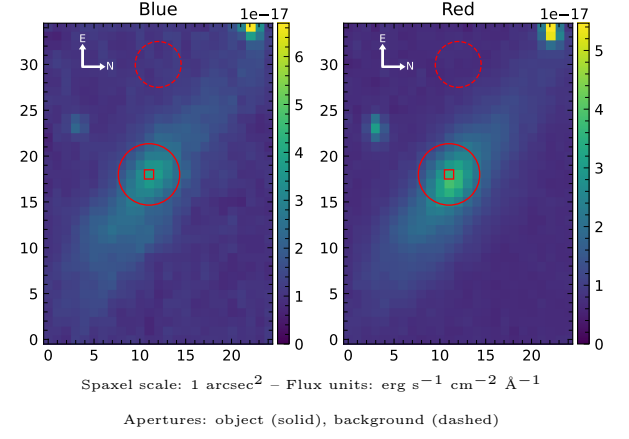


LEDA 130627

Spectrum ID	488331919_sp1	Spectrum type	SF
Alt name	g2129360-431455	Quality flag	good
z	0.0181	AGN reference	6dFGS
RA, Dec	322.3999, -43.2486	MW $E(B - V)$	0.029
MJD	60167.58	Power law α_ν	-1.78 ± 0.03
SNR/ \AA B/R	15.7/29.8	$\log L_{5100, \text{AGN}}$	42.02 ± 0.01
Obs airmass	1.02	$\log H\beta_{\text{Br}}/[\text{O III}]$	—
SMSS ID	488331919	$\log M_{L5100}/M_\odot$	—
Neighbour	4.9", 2699598415	$\log M_{\text{H}\alpha}/M_\odot$	—
SMSS $\langle r_{6'' \text{ap}} \rangle$	16.43 ± 0.05	$\log M_{\text{H}\beta}/M_\odot$	—
2MASS K_{ext}	12.32 ± 0.08	$\log M_{[\text{O III}]} / M_\odot$	—



Emission Line Measurements

Line	$\log L$ (erg s ⁻¹)	FWHM (km s ⁻¹)	σ (km s ⁻¹)	EW (Å)
H γ Narrow	38.62 ± 0.11	172 ± 62	73 ± 25	1.95 ± 0.30
Hγ Broad	—	—	—	—
[O III] 4364	—	—	—	—
He II Narrow	37.99 ± 0.37	181 ± 62	72 ± 25	0.46 ± 0.27
He II Broad	38.58 ± 0.31	1272 ± 62	540 ± 25	1.78 ± 0.65
H β Narrow	39.36 ± 0.02	172 ± 62	73 ± 25	10.88 ± 0.26
Hβ Broad	—	—	—	—
[O III] 5007	39.25 ± 0.02	172 ± 62	73 ± 25	8.56 ± 0.27
He I Narrow	—	—	—	—
He I Broad	38.57 ± 0.17	1180 ± 62	501 ± 25	1.84 ± 1.15
[O I] 6300	38.56 ± 0.07	181 ± 62	72 ± 25	1.85 ± 0.16
H α Narrow	40.02 ± 0.01	181 ± 62	72 ± 25	53.96 ± 0.20
Hα Broad	—	—	—	—
[N II] 6585	39.49 ± 0.01	181 ± 62	72 ± 25	15.70 ± 0.17
[S II] 6718	39.39 ± 0.01	181 ± 62	72 ± 25	12.50 ± 0.19
[S II] 6732	39.24 ± 0.01	181 ± 62	72 ± 25	8.94 ± 0.16

Emission Summary

H α broad SNR	0.00
H β broad SNR	0.00
H γ broad SNR	0.00
AGN frac	0.43
Host frac	0.57
$\log L_{5100, \text{Host}}$	42.15
Fe II/H β	—
Fe II/[O III]	—

Quality Flags

spurious_hab/hbb	0/0
15100	1
balmer	2
balmer_snr	2
hb_width	2
balmer_width	2