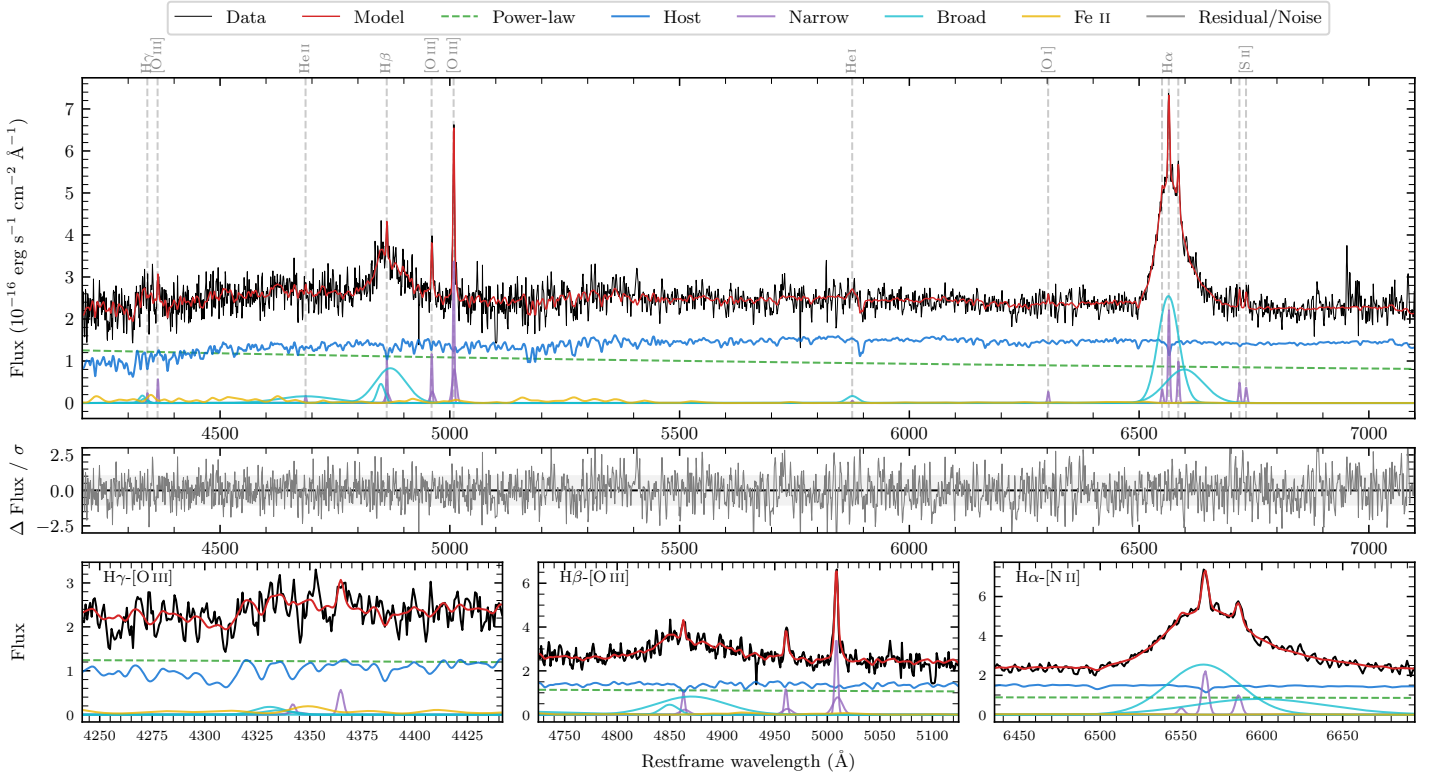
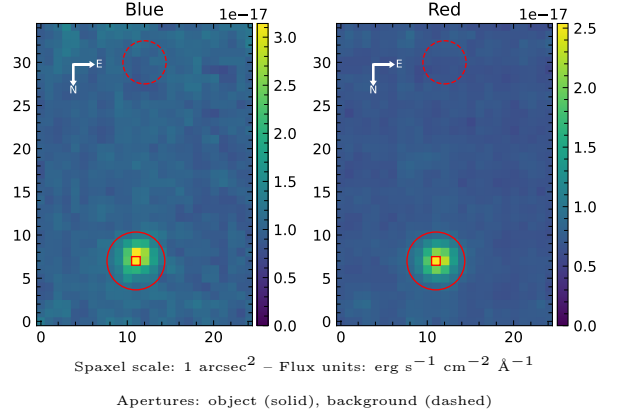


LEDA 549860

Spectrum ID	488257534_sp1	Spectrum type	Sy 1.2
Alt name	g2109165-432059	Quality flag	good
z	0.0941	AGN reference	6dFGS
RA, Dec	317.3188, -43.3497	MW $E(B - V)$	0.026
MJD	60167.52	Power law α_ν	-1.17 ± 0.23
SNR/ \AA B/R	9.6/14.1	$\log L_{5100, \text{AGN}}$	43.08 ± 0.04
Obs airmass	1.07	$\log H\beta_{\text{Br}}/[\text{O III}]$	0.55 ± 0.04
SMSS ID	488257534	$\log M_{L5100}/M_\odot$	7.69 ± 0.08
Neighbour	7.8", 488257533	$\log M_{\text{H}\alpha}/M_\odot$	7.24 ± 0.03
SMSS $\langle r_{6''}^{\text{ap}} \rangle$	17.65 ± 0.04	$\log M_{\text{H}\beta}/M_\odot$	7.68 ± 0.08
2MASS K_{ext}	nan \pm nan	$\log M_{[\text{O III}]} / M_\odot$	7.56 ± 0.09



Emission Line Measurements

Line	$\log L$ (erg s^{-1})	FWHM (km s^{-1})	σ (km s^{-1})	EW (\AA)
H γ Narrow	39.50 ± 0.34	243 ± 63	190 ± 30	1.17 ± 0.79
Hγ Broad	40.16 ± 0.15	1226 ± 68	403 ± 25	4.60 ± 1.24
[O III] 4364	39.65 ± 0.19	210 ± 63	89 ± 25	1.65 ± 0.48
He II Narrow	39.17 ± 0.39	210 ± 63	89 ± 25	0.58 ± 0.53
He II Broad	40.78 ± 0.10	9165 ± 70	3892 ± 28	23.45 ± 3.17
H β Narrow	40.18 ± 0.08	243 ± 63	190 ± 30	6.11 ± 0.83
Hβ Broad	41.27 ± 0.02	3883 ± 337	1657 ± 33	76.26 ± 2.46
[O III] 5007	40.73 ± 0.03	243 ± 63	190 ± 30	22.23 ± 0.93
He I Narrow	—	—	—	—
He I Broad	40.13 ± 0.12	1577 ± 67	669 ± 27	6.31 ± 1.12
[O I] 6300	39.49 ± 0.19	210 ± 63	89 ± 25	1.54 ± 0.44
H α Narrow	40.42 ± 0.03	210 ± 63	89 ± 25	13.66 ± 0.51
Hα Broad	41.74 ± 0.01	2789 ± 74	1193 ± 25	283.97 ± 2.35
[N II] 6585	40.07 ± 0.06	210 ± 63	89 ± 25	6.11 ± 0.48
[S II] 6718	39.77 ± 0.10	210 ± 63	89 ± 25	3.11 ± 0.57
[S II] 6732	39.66 ± 0.14	210 ± 63	89 ± 25	2.41 ± 0.57

Emission Summary

H α broad SNR	11.65
H β broad SNR	4.27
H γ broad SNR	1.19
AGN frac	0.45
Host frac	0.55
$\log L_{5100, \text{Host}}$	43.17
Fe II/H β	0.35
Fe II/[O III]	1.23

Quality Flags

spurious_hab/hbb	0/0
15100	1
balmer	0
balmer_snr	1
hb_width	0
balmer_width	0