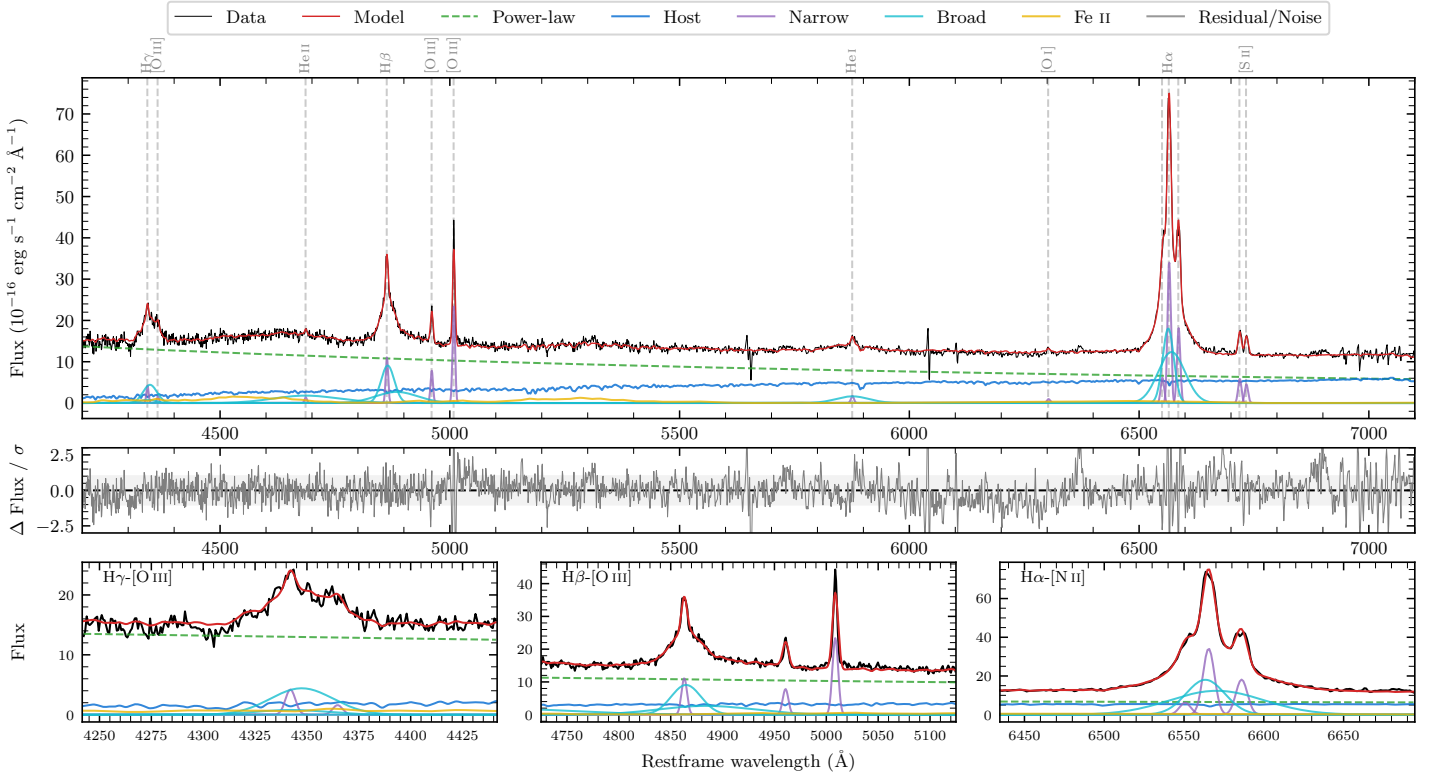
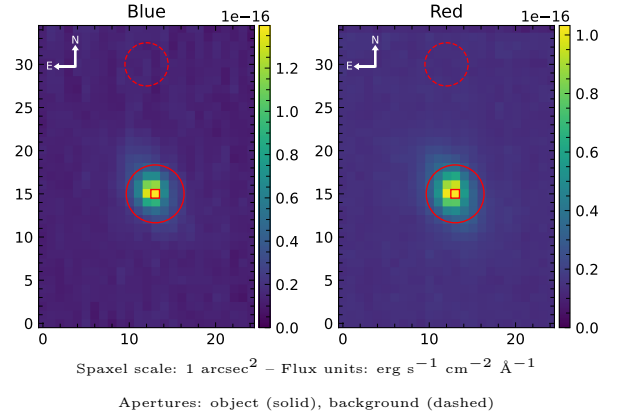


LEDA 622139

Spectrum ID	488201165_sp1	Spectrum type	Sy 1.2
Alt name	g2112449-373012	Quality flag	good
z	0.0430	AGN reference	6dFGS
RA, Dec	318.1870, -37.5033	MW $E(B-V)$	0.036
MJD	60085.8	Power law α_ν	-0.35 ± 0.14
SNR/ \AA B/R	17.4/25.2	$\log L_{5100, \text{AGN}}$	43.34 ± 0.02
Obs airmass	1.01	$\log H\beta_{\text{Br}}/[\text{O III}]$	0.59 ± 0.02
SMSS ID	488201165	$\log M_{L5100}/M_\odot$	7.41 ± 0.03
Neighbour	None $< 15''$	$\log M_{\text{H}\alpha}/M_\odot$	6.89 ± 0.04
SMSS $\langle r_6'' \text{ap} \rangle$	15.95 ± 0.10	$\log M_{\text{H}\beta}/M_\odot$	7.37 ± 0.04
2MASS K_{ext}	12.38 ± 0.08	$\log M_{[\text{O III}]} / M_\odot$	7.23 ± 0.04



Emission Line Measurements

Line	$\log L$ (erg s^{-1})	FWHM (km s^{-1})	σ (km s^{-1})	EW (\AA)
H γ Narrow	40.06 ± 0.09	390 ± 63	168 ± 25	2.05 ± 0.24
Hγ Broad	40.95 ± 0.03	2482 ± 121	917 ± 43	16.15 ± 0.57
[O III] 4364	39.63 ± 0.20	388 ± 63	165 ± 25	0.78 ± 0.19
He II Narrow	39.60 ± 0.17	388 ± 63	165 ± 25	0.80 ± 0.19
He II Broad	41.15 ± 0.03	10654 ± 168	4524 ± 71	29.04 ± 1.04
H β Narrow	40.54 ± 0.03	390 ± 63	168 ± 25	7.32 ± 0.26
Hβ Broad	41.45 ± 0.01	2467 ± 68	1425 ± 47	61.63 ± 0.84
[O III] 5007	40.87 ± 0.01	390 ± 63	168 ± 25	16.59 ± 0.29
He I Narrow	39.80 ± 0.08	388 ± 63	165 ± 25	1.85 ± 0.19
He I Broad	40.81 ± 0.03	4259 ± 107	1809 ± 44	19.09 ± 0.63
[O I] 6300	39.57 ± 0.11	388 ± 63	165 ± 25	1.24 ± 0.21
H α Narrow	41.14 ± 0.01	388 ± 63	165 ± 25	49.06 ± 0.36
Hα Broad	41.82 ± 0.01	1762 ± 71	882 ± 25	232.03 ± 0.77
[N II] 6585	40.87 ± 0.01	388 ± 63	165 ± 25	26.27 ± 0.34
[S II] 6718	40.39 ± 0.02	388 ± 63	165 ± 25	8.93 ± 0.25
[S II] 6732	40.28 ± 0.02	388 ± 63	165 ± 25	6.97 ± 0.24

Emission Summary

H α broad SNR	33.87
H β broad SNR	13.03
H γ broad SNR	5.87
AGN frac	0.76
Host frac	0.24
$\log L_{5100, \text{Host}}$	42.84
Fe II/H β	0.55
Fe II/[O III]	2.14

Quality Flags

spurious_hab/hbb	0/0
15100	0
balmer	0
balmer_snr	0
hb_width	1
balmer_width	0