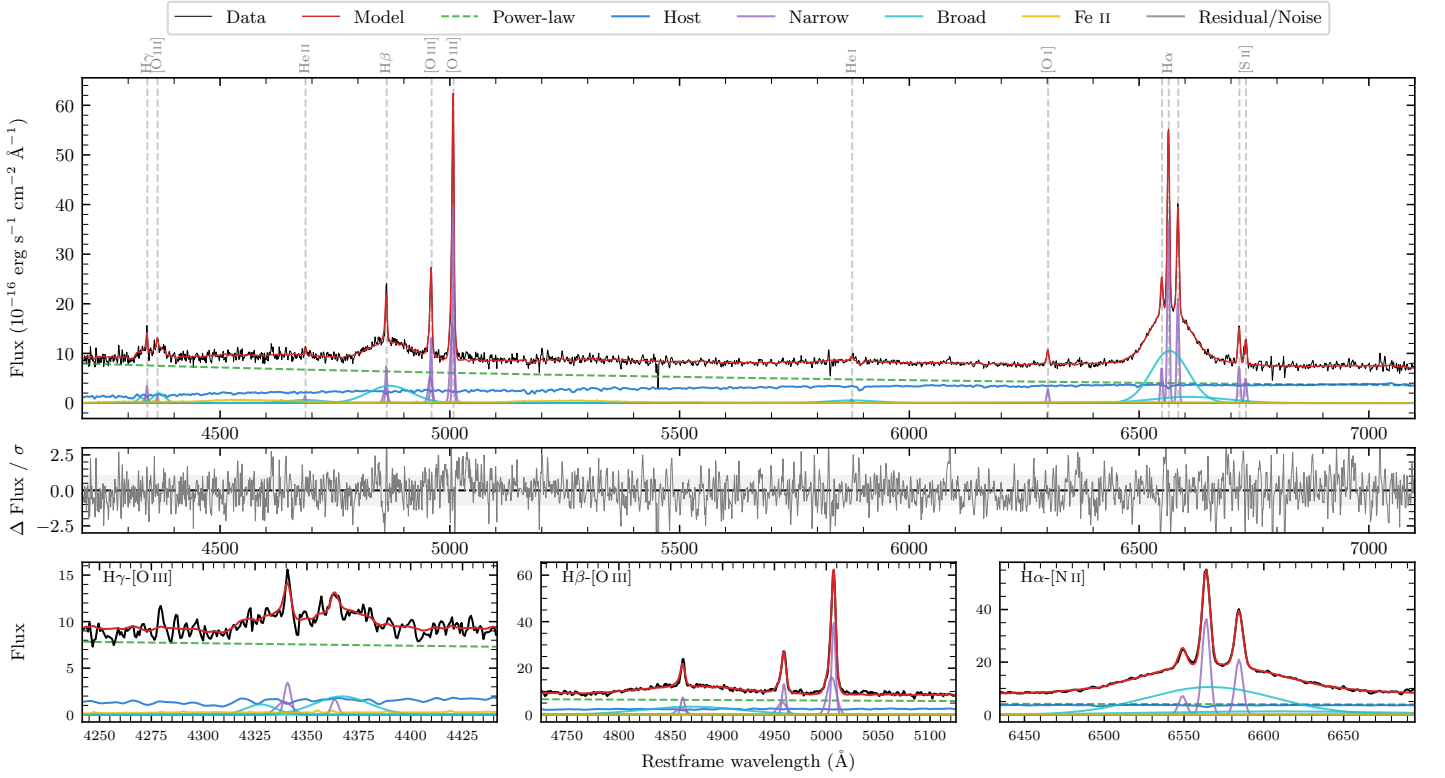
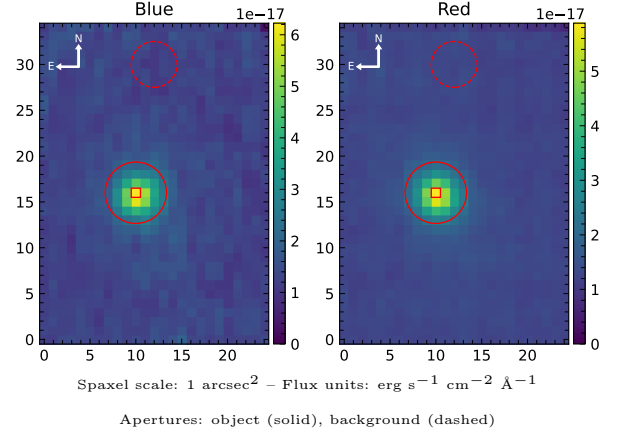


2MASS J21034786–3606149

Spectrum ID	488143207_sp1	Spectrum type	Sy 1.5
Alt name	g2103479–360615	Quality flag	good
z	0.0814	AGN reference	6dFGS
RA, Dec	315.9495, –36.1041	MW $E(B - V)$	0.074
MJD	60083.78	Power law α_ν	-0.47 ± 0.15
SNR/ \AA B/R	15.2/21.3	$\log L_{5100, \text{AGN}}$	43.70 ± 0.02
Obs airmass	1.01	$\log H\beta_{\text{Br}}/[\text{O III}]$	0.07 ± 0.02
SMSS ID	488143207	$\log M_{L5100}/M_\odot$	8.42 ± 0.03
Neighbour	None $< 15''$	$\log M_{\text{H}\alpha}/M_\odot$	8.05 ± 0.02
SMSS $\langle r_6'' \text{ap} \rangle$	16.37 ± 0.06	$\log M_{\text{H}\beta}/M_\odot$	8.42 ± 0.03
2MASS K_{ext}	12.78 ± 0.08	$\log M_{[\text{O III}]} / M_\odot$	8.55 ± 0.03



Emission Line Measurements

Line	$\log L$ (erg s^{-1})	FWHM (km s^{-1})	σ (km s^{-1})	EW (\AA)
H γ Narrow	40.68 ± 0.05	325 ± 63	204 ± 26	3.88 ± 0.29
Hγ Broad	41.18 ± 0.04	—	1307 ± 62	12.28 ± 0.57
[O III] 4364	40.09 ± 0.14	266 ± 62	112 ± 25	0.99 ± 0.19
He II Narrow	40.05 ± 0.13	266 ± 62	112 ± 25	1.02 ± 0.19
He II Broad	41.04 ± 0.08	6185 ± 333	2626 ± 141	10.34 ± 0.93
H β Narrow	41.07 ± 0.02	325 ± 63	204 ± 26	11.18 ± 0.32
Hβ Broad	41.88 ± 0.02	6641 ± 228	2505 ± 93	70.65 ± 1.11
[O III] 5007	41.81 ± 0.01	325 ± 63	204 ± 26	64.30 ± 0.39
He I Narrow	39.88 ± 0.13	266 ± 62	112 ± 25	0.96 ± 0.21
He I Broad	41.09 ± 0.06	6238 ± 315	2649 ± 133	15.81 ± 1.00
[O I] 6300	40.48 ± 0.03	266 ± 62	112 ± 25	4.32 ± 0.21
H α Narrow	41.60 ± 0.01	266 ± 62	112 ± 25	60.86 ± 0.32
Hα Broad	42.37 ± 0.01	4582 ± 70	1849 ± 41	354.97 ± 1.59
[N II] 6585	41.36 ± 0.01	266 ± 62	112 ± 25	35.11 ± 0.30
[S II] 6718	40.92 ± 0.01	266 ± 62	112 ± 25	12.94 ± 0.30
[S II] 6732	40.75 ± 0.03	266 ± 62	112 ± 25	8.84 ± 0.37

Emission Summary

H α broad SNR	18.80
H β broad SNR	5.96
H γ broad SNR	3.19
AGN frac	0.71
Host frac	0.29
$\log L_{5100, \text{Host}}$	43.30
Fe II/H β	0.35
Fe II/[O III]	0.40

Quality Flags

spurious_hab/hbb	0/0
15100	0
balmer	0
balmer_snr	0
hb_width	0
balmer_width	0