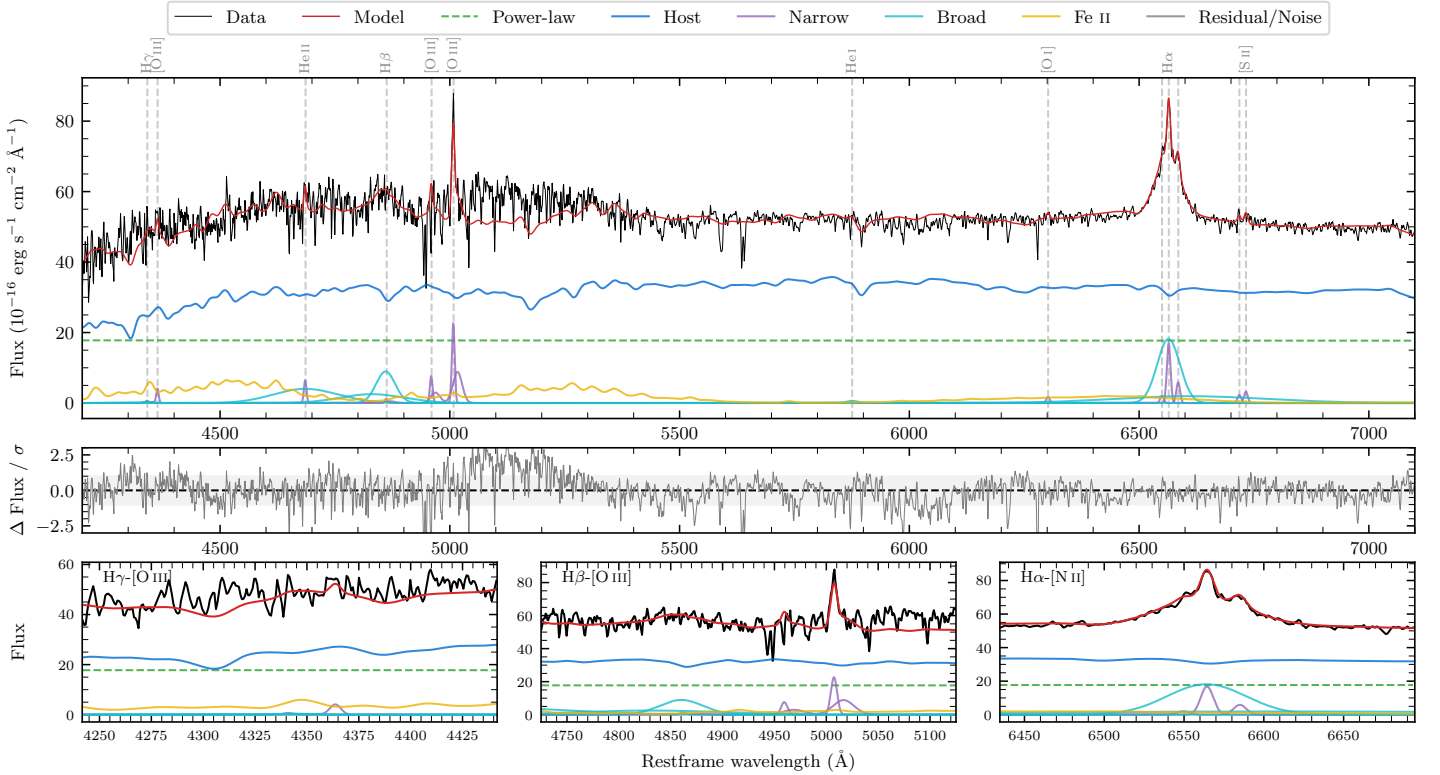
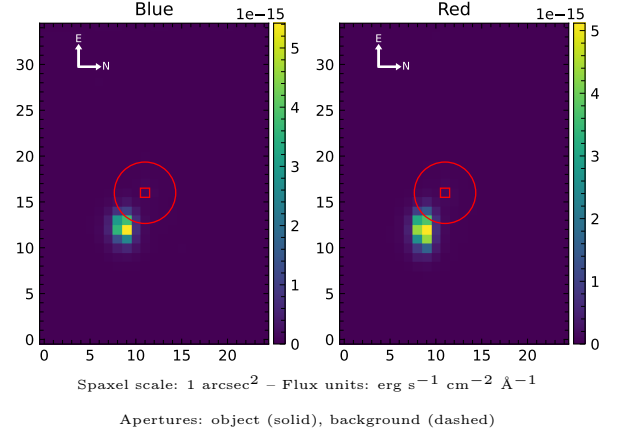


# TYC 7964–1271–1

Spectrum ID	488012563_sp1	Spectrum type	Sy 1.2
Alt name	6773969440832096896	Quality flag	good
$z$	0.0453	AGN reference	AllBRICS2
RA, Dec	314.9206, -38.9785	MW $E(B - V)$	0.035
MJD	60872.58	Power law $\alpha_\nu$	$-1.99 \pm 0.01$
SNR/ $\text{\AA}$ B/R	13.9/24.0	$\log L_{5100, \text{AGN}}$	$43.64 \pm 0.02$
Obs airmass	1.06	$\log H\beta_{\text{Br}}/[\text{O III}]$	$0.35 \pm 0.06$
SMSS ID	488012563	$\log M_{L5100}/M_\odot$	$7.85 \pm 0.05$
Neighbour	None $< 15''$	$\log M_{\text{H}\alpha}/M_\odot$	$7.41 \pm 0.03$
SMSS $\langle r_6''_{\text{ap}} \rangle$	$12.11 \pm 0.27$	$\log M_{\text{H}\beta}/M_\odot$	$7.77 \pm 0.06$
2MASS $K_{\text{ext}}$	$12.38 \pm 0.11$	$\log M_{[\text{O III}]} / M_\odot$	$7.76 \pm 0.06$



## Emission Line Measurements

Line	$\log L$ (erg s <sup>-1</sup> )	FWHM (km s <sup>-1</sup> )	$\sigma$ (km s <sup>-1</sup> )	EW (Å)
H $\gamma$ Narrow	—	—	—	—
<b>H<math>\gamma</math> Broad</b>	—	—	—	—
[O III] 4364	$40.13 \pm 0.23$	$425 \pm 62$	$180 \pm 25$	$1.57 \pm 0.66$
He II Narrow	$40.37 \pm 0.14$	$425 \pm 62$	$180 \pm 25$	$2.69 \pm 0.62$
<b>He II Broad</b>	<b><math>41.55 \pm 0.07</math></b>	<b><math>10497 \pm 62</math></b>	<b><math>4457 \pm 25</math></b>	<b><math>41.45 \pm 3.08</math></b>
H $\beta$ Narrow	$40.04 \pm 0.48$	$514 \pm 66$	$539 \pm 28$	$1.28 \pm 1.03$
<b>H<math>\beta</math> Broad</b>	<b><math>41.66 \pm 0.05</math></b>	<b><math>3527 \pm 204</math></b>	<b><math>2118 \pm 156</math></b>	<b><math>53.09 \pm 2.92</math></b>
[O III] 5007	$41.30 \pm 0.03$	$514 \pm 66$	$540 \pm 28$	$23.24 \pm 1.10$
He I Narrow	—	—	—	—
<b>He I Broad</b>	<b><math>39.98 \pm 0.40</math></b>	<b><math>1442 \pm 62</math></b>	<b><math>612 \pm 25</math></b>	<b><math>1.11 \pm 0.66</math></b>
[O I] 6300	$39.90 \pm 0.26$	$425 \pm 62$	$180 \pm 25$	$0.92 \pm 0.36$
H $\alpha$ Narrow	$40.93 \pm 0.04$	$425 \pm 62$	$180 \pm 25$	$9.86 \pm 0.48$
<b>H<math>\alpha</math> Broad</b>	<b><math>41.99 \pm 0.03</math></b>	<b><math>2848 \pm 72</math></b>	<b><math>2556 \pm 122</math></b>	<b><math>113.94 \pm 2.26</math></b>
[N II] 6585	$40.47 \pm 0.10$	$425 \pm 62$	$180 \pm 25$	$3.44 \pm 0.46$
[S II] 6718	$40.07 \pm 0.19$	$425 \pm 62$	$180 \pm 25$	$1.38 \pm 0.38$
[S II] 6732	$40.22 \pm 0.13$	$425 \pm 62$	$180 \pm 25$	$1.93 \pm 0.37$

## Emission Summary

H $\alpha$ broad SNR	5.30
H $\beta$ broad SNR	2.96
H $\gamma$ broad SNR	0.00
AGN frac	0.36
Host frac	0.64
$\log L_{5100, \text{Host}}$	43.89
Fe II/H $\beta$	1.76
Fe II/[O III]	4.03

## Quality Flags

spurious_hab/hbb	0/0
15100	1
balmer	1
balmer_snr	2
hb_width	1
balmer_width	0