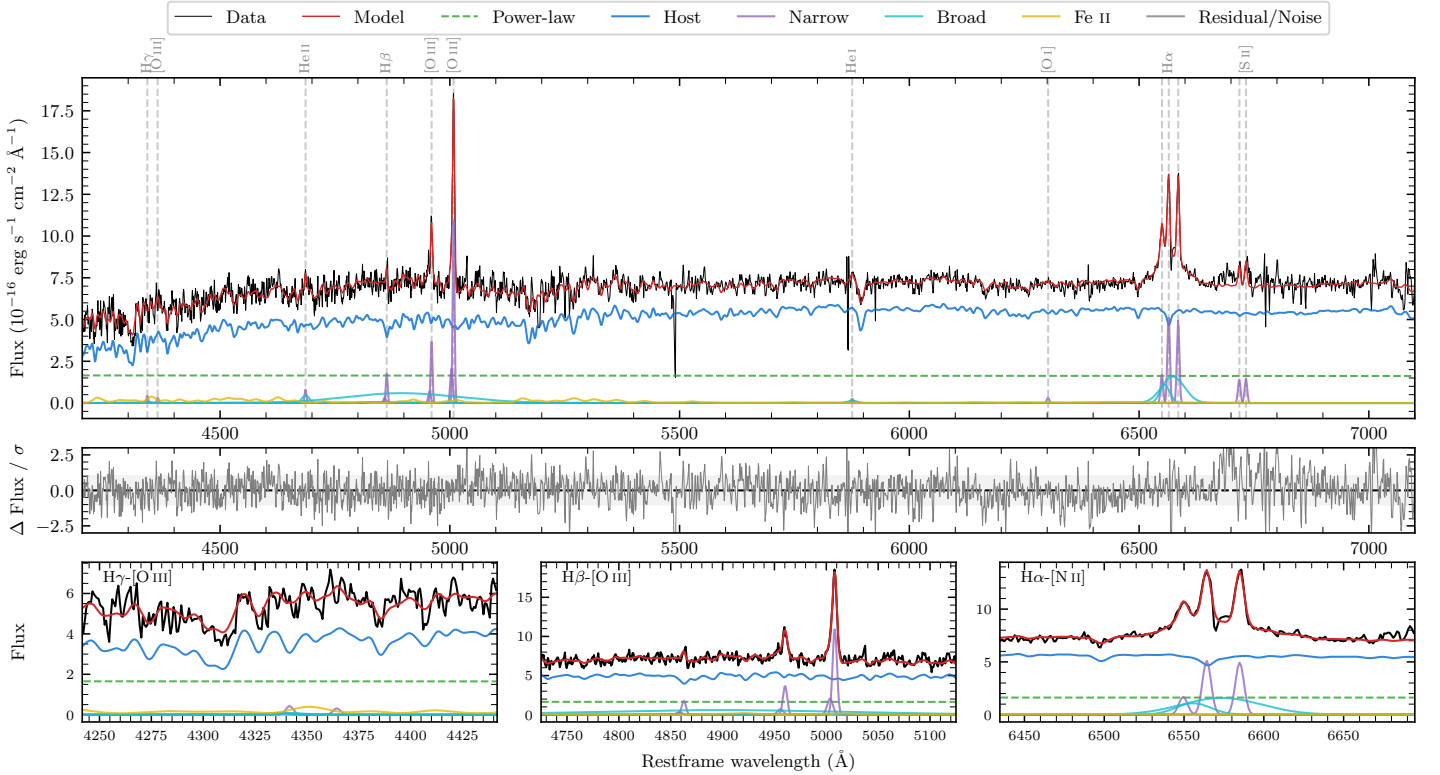
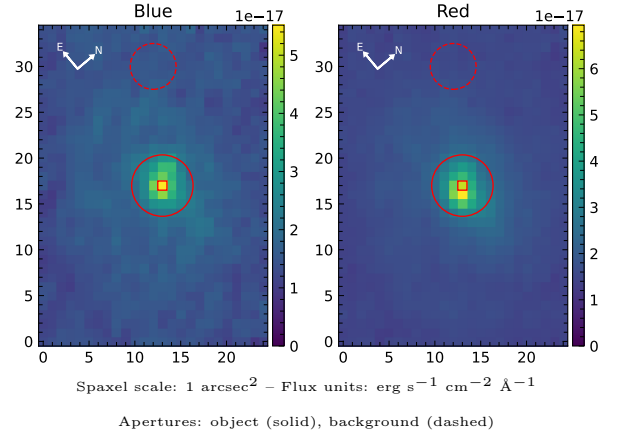


FRL 969

| | | | |
|--|--------------------|--|------------------|
| Spectrum ID | 487859991_sp1 | Spectrum type | Sy 1.8+ |
| Alt name | g2125407-490938 | Quality flag | good |
| z | 0.0743 | AGN reference | 6dFGS |
| RA, Dec | 321.4198, -49.1606 | MW $E(B - V)$ | 0.025 |
| MJD | 60087.78 | Power law α_ν | -1.96 ± 0.04 |
| SNR/ \AA B/R | 13.8/24.7 | $\log L_{5100, \text{AGN}}$ | 43.05 ± 0.04 |
| Obs airmass | 1.06 | $\log H\beta_{\text{Br}}/[\text{O III}]$ | < -0.48 |
| SMSS ID | 487859991 | $\log M_{L5100}/M_\odot$ | — |
| Neighbour | None $< 15''$ | $\log M_{\text{H}\alpha}/M_\odot$ | 6.79 ± 0.06 |
| SMSS $\langle r_6''_{\text{ap}} \rangle$ | 16.56 ± 0.06 | $\log M_{\text{H}\beta}/M_\odot$ | — |
| 2MASS K_{ext} | 11.83 ± 0.10 | $\log M_{[\text{O III}]} / M_\odot$ | — |



Emission Line Measurements

| Line | $\log L$ (erg s^{-1}) | FWHM (km s^{-1}) | σ (km s^{-1}) | EW (\AA) |
|-----------------------------------|------------------------------------|----------------------------------|---------------------------------|------------------------------------|
| H γ Narrow | 39.54 ± 0.35 | 319 ± 63 | 172 ± 25 | 1.56 ± 0.81 |
| Hγ Broad | — | — | — | — |
| [O III] 4364 | 39.32 ± 0.40 | 292 ± 62 | 124 ± 25 | 0.93 ± 0.69 |
| He II Narrow | 39.75 ± 0.22 | 292 ± 62 | 124 ± 25 | 2.55 ± 0.63 |
| He II Broad | — | — | — | — |
| H β Narrow | 40.21 ± 0.08 | 319 ± 63 | 172 ± 25 | 7.26 ± 0.76 |
| Hβ Broad | < 40.54 | — | — | — |
| [O III] 5007 | 41.02 ± 0.01 | 319 ± 63 | 172 ± 25 | 46.61 ± 0.92 |
| He I Narrow | 39.37 ± 0.33 | 292 ± 62 | 124 ± 25 | 1.06 ± 0.72 |
| He I Broad | 39.76 ± 0.31 | 1198 ± 63 | 509 ± 25 | 2.58 ± 1.11 |
| [O I] 6300 | 39.48 ± 0.23 | 292 ± 62 | 124 ± 25 | 1.39 ± 0.41 |
| H α Narrow | 40.70 ± 0.02 | 292 ± 62 | 124 ± 25 | 23.02 ± 0.52 |
| Hα Broad | 41.27 ± 0.02 | 2320 ± 122 | 910 ± 25 | 85.32 ± 1.52 |
| [N II] 6585 | 40.69 ± 0.02 | 292 ± 62 | 124 ± 25 | 22.28 ± 0.51 |
| [S II] 6718 | 40.15 ± 0.05 | 292 ± 62 | 124 ± 25 | 6.48 ± 0.48 |
| [S II] 6732 | 40.17 ± 0.05 | 292 ± 62 | 124 ± 25 | 6.79 ± 0.68 |

Emission Summary

| | |
|------------------------------|-------|
| H α broad SNR | 4.98 |
| H β broad SNR | 0.14 |
| H γ broad SNR | 0.00 |
| AGN frac | 0.26 |
| Host frac | 0.74 |
| $\log L_{5100, \text{Host}}$ | 43.51 |
| Fe II/H β | — |
| Fe II/[O III] | — |

Quality Flags

| | |
|------------------|-----|
| spurious_hab/hbb | 0/1 |
| 15100 | 1 |
| balmer | 2 |
| balmer_snr | 2 |
| hb_width | 2 |
| balmer_width | 2 |