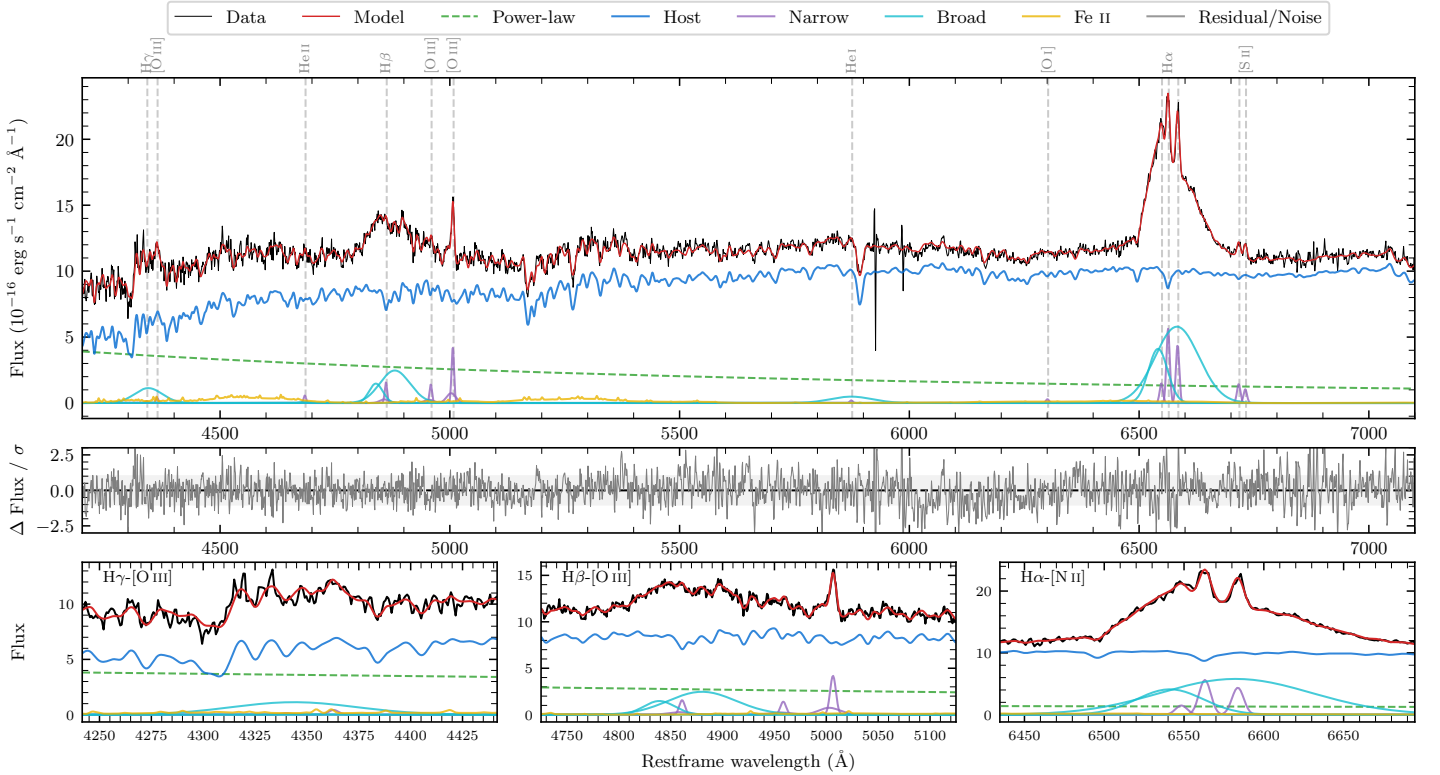
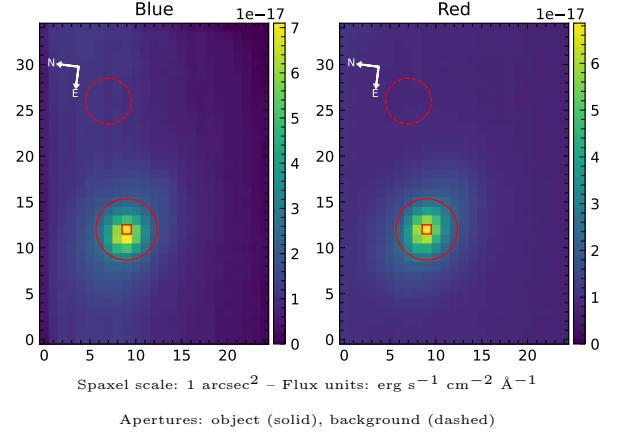


LEDA 3082971

Spectrum ID	487504676_sp1	Spectrum type	Sy 1.0
Alt name	g2037599-502334	Quality flag	good
z	0.0627	AGN reference	6dFGS
RA, Dec	309.4995, -50.3926	MW $E(B - V)$	0.026
MJD	59026.65	Power law α_ν	0.43 ± 0.06
SNR/ \AA B/R	24.0/46.8	$\log L_{5100, \text{AGN}}$	43.08 ± 0.03
Obs airmass	1.07	$\log H\beta_{\text{Br}}/[\text{O III}]$	0.73 ± 0.03
SMSS ID	487504676	$\log M_{L5100}/M_\odot$	8.02 ± 0.03
Neighbour	None $< 15''$	$\log M_{H\alpha}/M_\odot$	7.85 ± 0.01
SMSS $\langle r_6'' \text{ap} \rangle$	16.16 ± 0.04	$\log M_{H\beta}/M_\odot$	8.08 ± 0.03
2MASS K_{ext}	12.24 ± 0.09	$\log M_{[\text{O III}]} / M_\odot$	7.87 ± 0.05



Emission Line Measurements

Line	$\log L$ (erg s $^{-1}$)	FWHM (km s $^{-1}$)	σ (km s $^{-1}$)	EW (\AA)
H γ Narrow	—	—	—	—
Hγ Broad	40.95 ± 0.05	4726 ± 210	1795 ± 41	25.41 ± 1.35
[O III] 4364	39.42 ± 0.31	396 ± 63	167 ± 25	0.77 ± 0.37
He II Narrow	39.58 ± 0.22	396 ± 63	167 ± 25	1.32 ± 0.40
He II Broad	39.38 ± 0.46	1438 ± 88	610 ± 36	0.84 ± 0.73
H β Narrow	40.25 ± 0.07	438 ± 64	411 ± 38	6.73 ± 0.79
Hβ Broad	41.42 ± 0.01	5700 ± 104	1879 ± 26	100.05 ± 1.55
[O III] 5007	40.69 ± 0.03	438 ± 64	411 ± 38	19.96 ± 0.86
He I Narrow	39.22 ± 0.28	396 ± 63	167 ± 25	1.01 ± 0.41
He I Broad	40.75 ± 0.04	5439 ± 109	2310 ± 45	33.79 ± 1.91
[O I] 6300	39.41 ± 0.18	396 ± 63	167 ± 25	1.85 ± 0.48
H α Narrow	40.72 ± 0.02	396 ± 63	167 ± 25	41.40 ± 0.67
Hα Broad	41.97 ± 0.01	4792 ± 74	1821 ± 25	731.51 ± 2.29
[N II] 6585	40.61 ± 0.02	396 ± 63	167 ± 25	32.50 ± 0.64
[S II] 6718	40.14 ± 0.04	396 ± 63	167 ± 25	11.43 ± 0.59
[S II] 6732	40.00 ± 0.05	396 ± 63	167 ± 25	8.37 ± 0.59

Emission Summary

H α broad SNR	19.04
H β broad SNR	6.22
H γ broad SNR	2.75
AGN frac	0.23
Host frac	0.77
$\log L_{5100, \text{Host}}$	43.60
Fe II/H β	0.42
Fe II/[O III]	2.26

Quality Flags

spurious_hab/hbb	0/0
15100	2
balmer	0
balmer_snr	1
hb_width	0
balmer_width	0