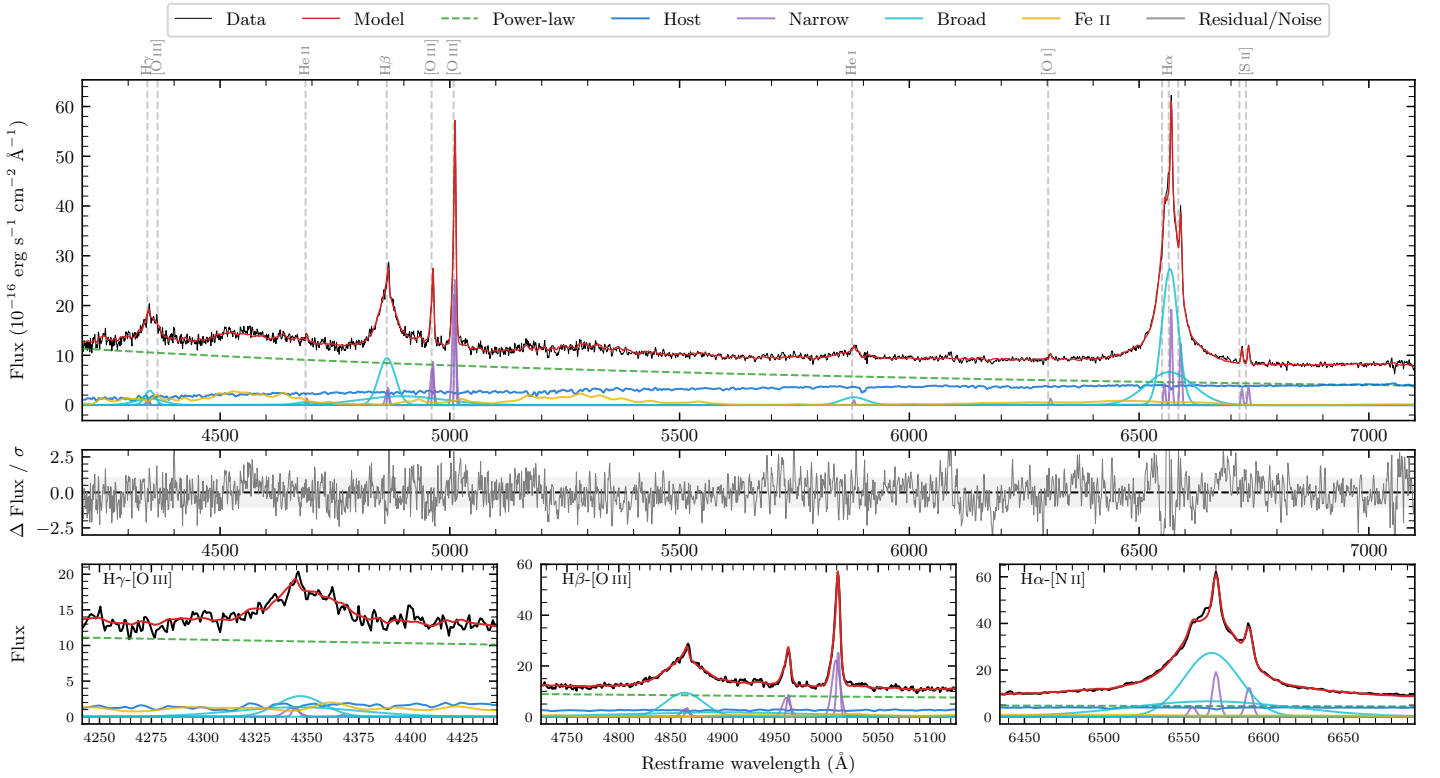
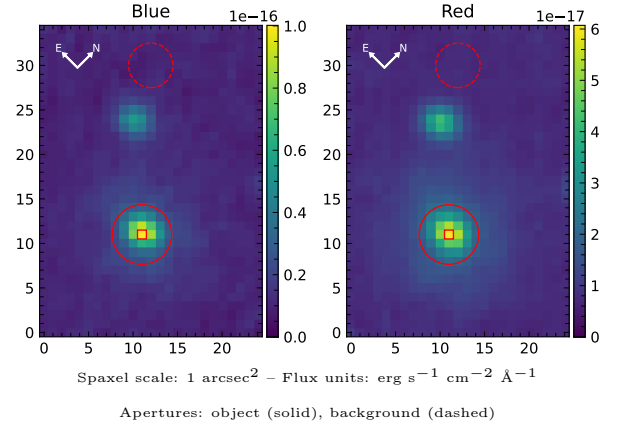


LEDA 3923571

Spectrum ID	487472887_sp1	Spectrum type	Sy 1.5
Alt name	g2025574-482226	Quality flag	good
z	0.0674	AGN reference	6dFGS
RA, Dec	306.4891, -48.3739	MW $E(B-V)$	0.030
MJD	60166.5	Power law α_ν	0.02 ± 0.08
SNR/ \AA B/R	18.5/25.3	$\log L_{5100, \text{AGN}}$	43.63 ± 0.01
Obs airmass	1.08	$\log H\beta_{\text{Br}}/[\text{O III}]$	0.12 ± 0.15
SMSS ID	487472887	$\log M_{L5100}/M_\odot$	7.59 ± 0.02
Neighbour	12.2", 487472888	$\log M_{H\alpha}/M_\odot$	7.39 ± 0.03
SMSS $\langle r_6 \rangle_{\text{ap}}$	15.86 ± 0.10	$\log M_{H\beta}/M_\odot$	7.54 ± 0.08
2MASS K_{ext}	11.96 ± 0.09	$\log M_{[\text{O III}]} / M_\odot$	7.64 ± 0.02



Emission Line Measurements

Line	$\log L$ (erg s^{-1})	FWHM (km s^{-1})	σ (km s^{-1})	EW (\AA)
H γ Narrow	40.26 ± 0.12	356 ± 63	209 ± 25	1.56 ± 0.22
Hγ Broad	41.33 ± 0.03	2279 ± 190	1195 ± 89	18.42 ± 0.68
[O III] 4364	—	—	—	—
He II Narrow	39.78 ± 0.16	238 ± 63	99 ± 25	0.61 ± 0.14
He II Broad	—	—	—	—
H β Narrow	40.69 ± 0.04	356 ± 63	209 ± 25	5.37 ± 0.27
Hβ Broad	$41.70^{+0.28}_{-0.01}$	2653 ± 56	998 ± 29	54.80 ± 0.57
[O III] 5007	41.58 ± 0.01	356 ± 63	209 ± 25	43.81 ± 0.30
He I Narrow	39.76 ± 0.10	238 ± 63	99 ± 25	0.92 ± 0.14
He I Broad	41.11 ± 0.02	3314 ± 122	1407 ± 51	20.24 ± 0.60
[O I] 6300	39.89 ± 0.07	238 ± 63	99 ± 25	1.44 ± 0.16
H α Narrow	41.09 ± 0.01	238 ± 63	99 ± 25	24.29 ± 0.30
Hα Broad	42.38 ± 0.01	2137 ± 64	1103 ± 25	474.68 ± 1.05
[N II] 6585	40.91 ± 0.01	238 ± 63	99 ± 25	16.16 ± 0.26
[S II] 6718	40.33 ± 0.03	238 ± 63	99 ± 25	4.46 ± 0.20
[S II] 6732	40.36 ± 0.03	238 ± 63	99 ± 25	4.84 ± 0.21

Emission Summary

H α broad SNR	52.43
H β broad SNR	14.57
H γ broad SNR	6.52
AGN frac	0.73
Host frac	0.27
$\log L_{5100, \text{Host}}$	43.19
Fe II/H β	—
Fe II/[O III]	—

Quality Flags

spurious_hab/hbb	0/1
15100	0
balmer	0
balmer_snr	0
hb_width	0
balmer_width	0