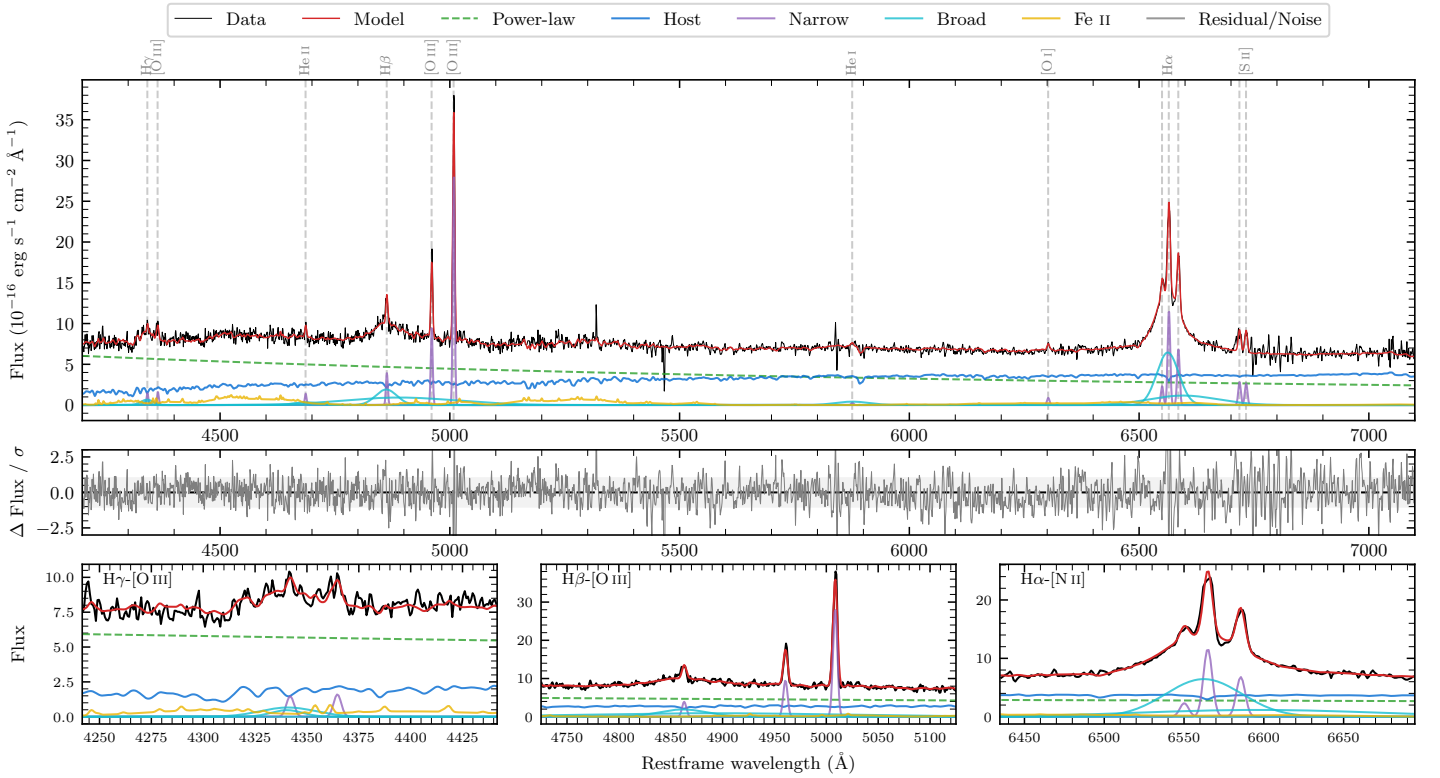
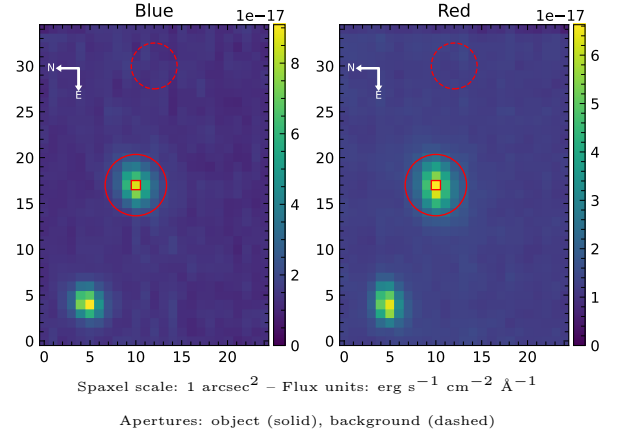


2MASS J20271922–4033352

Spectrum ID	487345163_sp1	Spectrum type	Sy 1.5
Alt name	g2027192–403336	Quality flag	good
z	0.0790	AGN reference	6dFGS
RA, Dec	306.8301, –40.5598	MW $E(B - V)$	0.037
MJD	60082.73	Power law α_ν	-0.26 ± 0.18
SNR/Å B/R	14.3/20.5	$\log L_{5100, \text{AGN}}$	43.53 ± 0.03
Obs airmass	1.05	$\log H\beta_{\text{Br}}/[\text{O III}]$	-0.13 ± 0.29
SMSS ID	487345163	$\log M_{L5100}/M_\odot$	7.75 ± 0.04
Neighbour	14.1", 487345166	$\log M_{\text{H}\alpha}/M_\odot$	7.41 ± 0.02
SMSS $\langle r_6^{\text{ap}} \rangle$	16.79 ± 0.05	$\log M_{\text{H}\beta}/M_\odot$	7.55 ± 0.15
2MASS K_{ext}	13.25 ± 0.12	$\log M_{[\text{O III}]} / M_\odot$	7.76 ± 0.04



Emission Line Measurements

Line	$\log L$ (erg s ⁻¹)	FWHM (km s ⁻¹)	σ (km s ⁻¹)	EW (Å)
H γ Narrow	40.05 ± 0.16	301 ± 63	132 ± 26	1.29 ± 0.42
Hγ Broad	40.72 ± 0.09	1730 ± 310	677 ± 85	5.85 ± 0.66
[O III] 4364	40.09 ± 0.12	297 ± 63	126 ± 25	1.41 ± 0.25
He II Narrow	40.06 ± 0.12	297 ± 63	126 ± 25	1.49 ± 0.32
He II Broad	–	–	–	–
H β Narrow	40.53 ± 0.04	301 ± 63	132 ± 26	4.68 ± 0.49
Hβ Broad	$41.27^{+0.55}_{-0.03}$	3349 ± 144	1244 ± 57	25.47 ± 0.92
[O III] 5007	41.40 ± 0.01	301 ± 63	133 ± 26	36.53 ± 0.59
He I Narrow	39.51 ± 0.26	297 ± 63	126 ± 25	0.63 ± 0.25
He I Broad	40.80 ± 0.07	4372 ± 238	1856 ± 101	12.31 ± 1.04
[O I] 6300	39.99 ± 0.08	297 ± 63	126 ± 25	2.13 ± 0.26
H α Narrow	41.13 ± 0.01	297 ± 63	126 ± 25	31.35 ± 0.37
Hα Broad	42.00 ± 0.01	2838 ± 73	1466 ± 34	235.36 ± 1.93
[N II] 6585	40.89 ± 0.01	297 ± 63	126 ± 25	18.49 ± 0.36
[S II] 6718	40.52 ± 0.04	297 ± 63	126 ± 25	8.05 ± 0.54
[S II] 6732	40.50 ± 0.03	297 ± 63	126 ± 25	7.72 ± 0.45

Emission Summary

H α broad SNR	13.66
H β broad SNR	3.47
H γ broad SNR	2.10
AGN frac	0.62
Host frac	0.38
$\log L_{5100, \text{Host}}$	43.31
Fe II/H β	–
Fe II/[O III]	–

Quality Flags

spurious_hab/hbb	0/1
15100	0
balmer	0
balmer_snr	1
hb_width	0
balmer_width	0