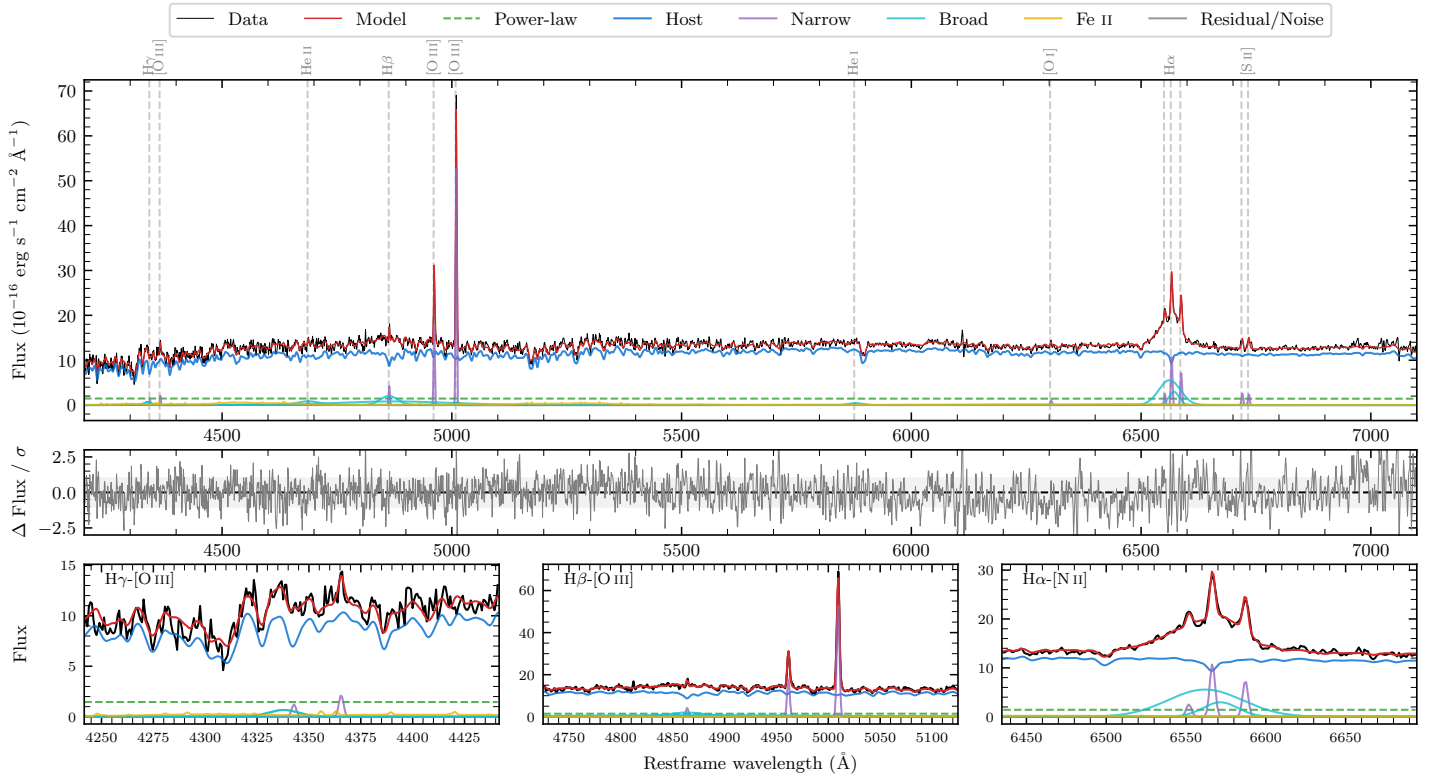
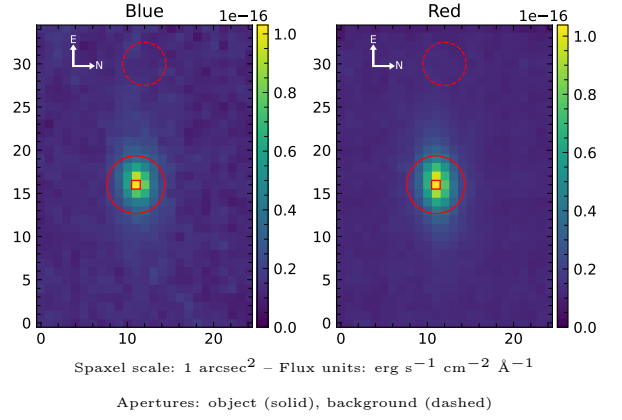


# LEDA 3082923

Spectrum ID	487162588_sp1	Spectrum type	Sy 1.5
Alt name	g2022088-471452	Quality flag	good
$z$	0.0312	AGN reference	6dFGS
RA, Dec	305.5368, -47.2476	MW $E(B - V)$	0.030
MJD	60082.72	Power law $\alpha_\nu$	$-1.94 \pm 0.05$
SNR/ $\text{\AA}$ B/R	17.5/31.2	$\log L_{5100, \text{AGN}}$	$42.21 \pm 0.07$
Obs airmass	1.09	$\log H\beta_{\text{Br}}/[\text{O III}]$	$-0.27 \pm 0.30$
SMSS ID	487162588	$\log M_{L5100}/M_\odot$	$7.02 \pm 0.05$
Neighbour	None $< 15''$	$\log M_{H\alpha}/M_\odot$	$6.49 \pm 0.05$
SMSS $\langle r_6 \rangle_{\text{ap}}$	$15.90 \pm 0.01$	$\log M_{H\beta}/M_\odot$	$6.97 \pm 0.16$
2MASS $K_{\text{ext}}$	$12.57 \pm 0.07$	$\log M_{[\text{O III}]} / M_\odot$	$7.21 \pm 0.04$



## Emission Line Measurements

Line	$\log L$ (erg s $^{-1}$ )	FWHM (km s $^{-1}$ )	$\sigma$ (km s $^{-1}$ )	EW (Angstrom)
H $\gamma$ Narrow	$38.92 \pm 0.30$	$185 \pm 62$	$113 \pm 31$	$2.56 \pm 1.96$
<b>H<math>\gamma</math> Broad</b>	<b><math>39.80 \pm 0.11</math></b>	<b><math>1188 \pm 63</math></b>	<b><math>437 \pm 25</math></b>	<b><math>17.37 \pm 2.68</math></b>
[O III] 4364	$39.14 \pm 0.17$	$190 \pm 62$	$77 \pm 25$	$4.26 \pm 1.06$
He II Narrow	$38.87 \pm 0.30$	$190 \pm 62$	$77 \pm 25$	$2.32 \pm 1.17$
<b>He II Broad</b>	—	—	—	—
H $\beta$ Narrow	$39.51 \pm 0.07$	$185 \pm 62$	$114 \pm 31$	$10.01 \pm 1.63$
<b>H<math>\beta</math> Broad</b>	<b><math>40.34^{+0.56}_{-0.05}</math></b>	<b><math>2766 \pm 38</math></b>	<b><math>1026 \pm 25</math></b>	<b><math>69.09 \pm 3.31</math></b>
[O III] 5007	$40.62 \pm 0.01$	$185 \pm 62$	$114 \pm 31$	$129.33 \pm 1.81$
He I Narrow	$38.20 \pm 0.48$	$190 \pm 62$	$77 \pm 25$	$0.50 \pm 0.49$
<b>He I Broad</b>	<b><math>39.58 \pm 0.11</math></b>	<b><math>1731 \pm 66</math></b>	<b><math>735 \pm 26</math></b>	<b><math>12.01 \pm 1.73</math></b>
[O I] 6300	$39.04 \pm 0.12$	$190 \pm 62$	$77 \pm 25$	$3.45 \pm 0.58$
H $\alpha$ Narrow	$40.02 \pm 0.02$	$190 \pm 62$	$77 \pm 25$	$33.20 \pm 0.64$
<b>H<math>\alpha</math> Broad</b>	<b><math>40.97 \pm 0.01</math></b>	<b><math>2036 \pm 79</math></b>	<b><math>832 \pm 25</math></b>	<b><math>295.94 \pm 2.34</math></b>
[N II] 6585	$39.85 \pm 0.02$	$190 \pm 62$	$77 \pm 25$	$22.76 \pm 0.61$
[S II] 6718	$39.40 \pm 0.05$	$190 \pm 62$	$77 \pm 25$	$8.03 \pm 0.61$
[S II] 6732	$39.37 \pm 0.06$	$190 \pm 62$	$77 \pm 25$	$7.51 \pm 0.64$

## Emission Summary

H $\alpha$ broad SNR	10.79
H $\beta$ broad SNR	2.67
H $\gamma$ broad SNR	1.95
AGN frac	0.12
Host frac	0.88
$\log L_{5100, \text{Host}}$	43.08
Fe II/H $\beta$	—
Fe II/[O III]	—

## Quality Flags

spurious_hab/hbb	0/2
15100	2
balmer	1
balmer_snr	1
hb_width	0
balmer_width	0