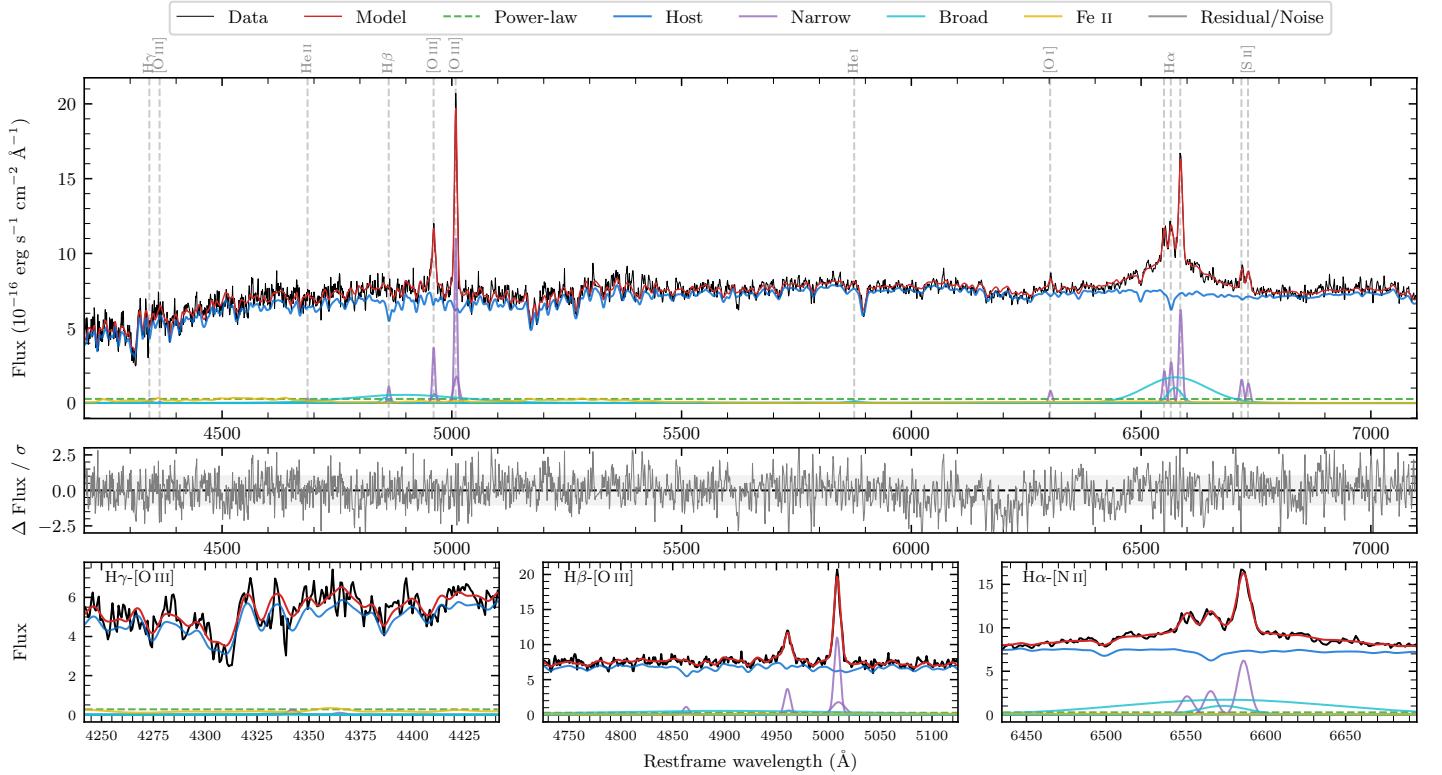
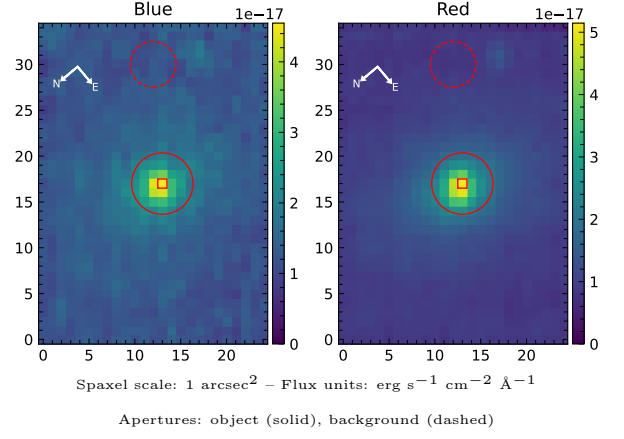


6dFGS gJ201134.0–415733

Spectrum ID	487085816_sp1	Spectrum type	Sy 1.8+
Alt name	g2011340–415733	Quality flag	good
z	0.0487	AGN reference	6dFGS
RA, Dec	302.8915, –41.9587	MW $E(B - V)$	0.047
MJD	60163.54	Power law α_ν	-1.95 ± 0.06
SNR/ \AA B/R	15.9/31.7	$\log L_{5100, \text{AGN}}$	41.89 ± 0.43
Obs airmass	1.02	$\log H\beta_{\text{Br}}/[\text{O III}]$	< -0.61
SMSS ID	487085816	$\log M_{L5100}/M_\odot$	–
Neighbour	None $< 15''$	$\log M_{\text{H}\alpha}/M_\odot$	7.31 ± 0.10
SMSS $\langle r_6''_{\text{ap}} \rangle$	16.32 ± 0.09	$\log M_{\text{H}\beta}/M_\odot$	–
2MASS K_{ext}	11.78 ± 0.07	$\log M_{[\text{O III}]} / M_\odot$	–



Emission Line Measurements

Line	$\log L$ (erg s ⁻¹)	FWHM (km s ⁻¹)	σ (km s ⁻¹)	EW (Å)
H γ Narrow	–	–	–	–
Hγ Broad	–	–	–	–
[O III] 4364	–	–	–	–
He II Narrow	39.12 ± 0.36	415 ± 62	175 ± 25	8.53 ± 4.18
He II Broad	–	–	–	–
H β Narrow	39.79 ± 0.10	447 ± 63	240 ± 27	40.72 ± 5.79
Hβ Broad	< 40.19	–	–	–
[O III] 5007	40.80 ± 0.01	447 ± 63	240 ± 27	415.17 ± 6.21
He I Narrow	38.68 ± 0.46	415 ± 62	175 ± 25	3.12 ± 2.59
He I Broad	39.46 ± 0.24	1889 ± 63	802 ± 25	19.16 ± 6.12
[O I] 6300	39.64 ± 0.07	415 ± 62	175 ± 25	29.29 ± 2.62
H α Narrow	40.19 ± 0.04	415 ± 62	175 ± 25	102.21 ± 3.59
Hα Broad	41.28 ± 0.01	4181 ± 438	2359 ± 30	1268.16 ± 12.26
[N II] 6585	40.55 ± 0.01	415 ± 62	175 ± 25	234.84 ± 3.45
[S II] 6718	39.96 ± 0.04	415 ± 62	175 ± 25	59.98 ± 2.84
[S II] 6732	39.88 ± 0.04	415 ± 62	175 ± 25	50.31 ± 2.86

Emission Summary

H α broad SNR	6.20
H β broad SNR	0.80
H γ broad SNR	0.00
AGN frac	0.04
Host frac	0.96
$\log L_{5100, \text{Host}}$	43.27
Fe II/H β	–
Fe II/[O III]	–

Quality Flags

spurious_hab/hbb	0/1
15100	2
balmer	2
balmer_snr	2
hb_width	2
balmer_width	2