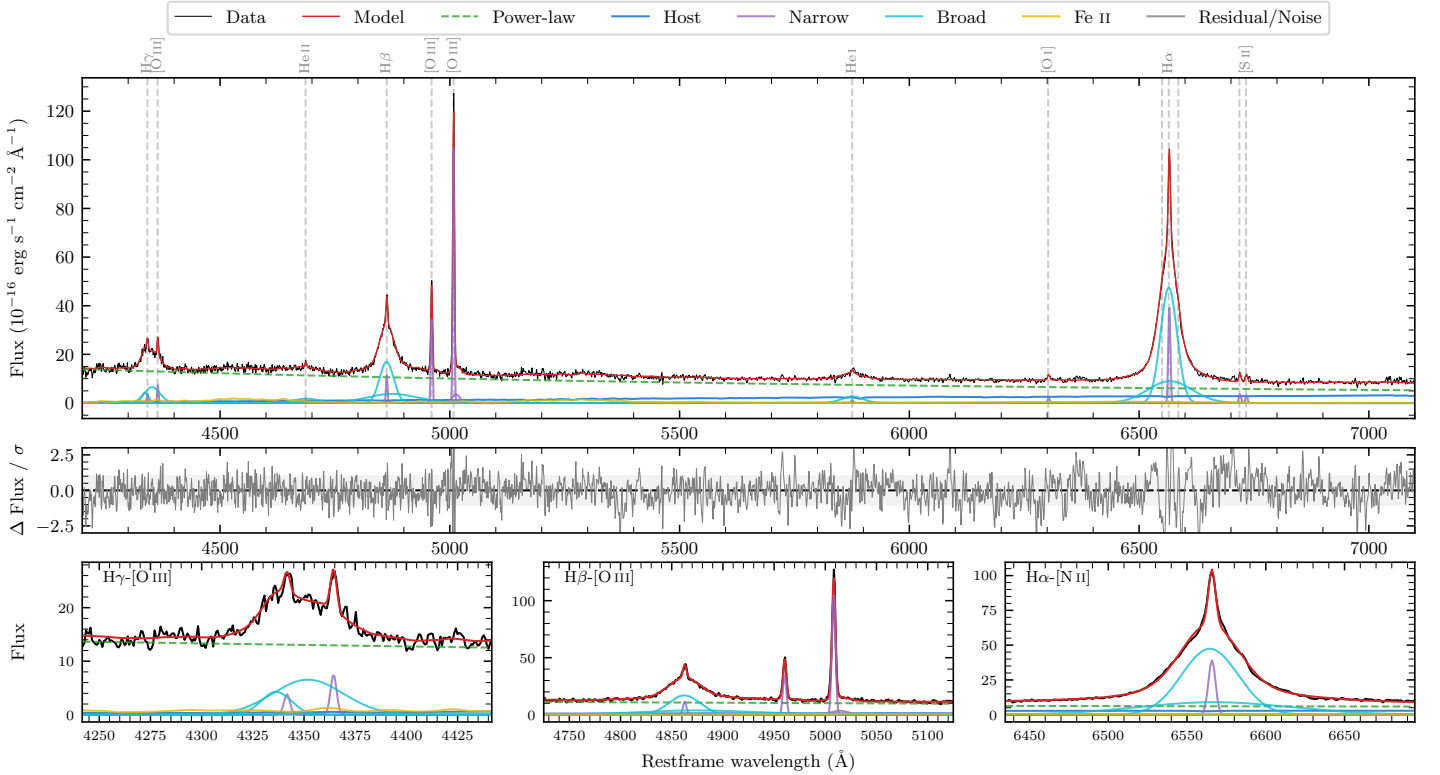
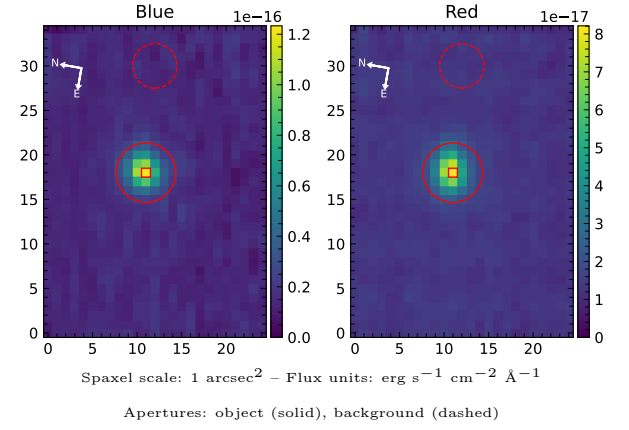


LEDA 3096578

Spectrum ID	487042394_sp1	Spectrum type	Sy 1.2
Alt name	g2005530-413442	Quality flag	good
z	0.0796	AGN reference	6dFGS
RA, Dec	301.4708, -41.5784	MW $E(B - V)$	0.056
MJD	60083.71	Power law α_ν	-0.14 ± 0.08
SNR/ \AA B/R	13.2/16.6	$\log L_{5100, \text{AGN}}$	43.89 ± 0.01
Obs airmass	1.06	$\log H\beta_{\text{Br}}/[\text{O III}]$	0.34 ± 0.01
SMSS ID	487042394	$\log M_{L5100}/M_\odot$	7.66 ± 0.02
Neighbour	None $< 15''$	$\log M_{\text{H}\alpha}/M_\odot$	7.61 ± 0.04
SMSS $\langle r_6 \rangle_{\text{ap}}$	15.86 ± 0.08	$\log M_{\text{H}\beta}/M_\odot$	7.76 ± 0.02
2MASS K_{ext}	nan \pm nan	$\log M_{[\text{O III}]} / M_\odot$	7.78 ± 0.02



Emission Line Measurements

Line	$\log L$ (erg s ⁻¹)	FWHM (km s ⁻¹)	σ (km s ⁻¹)	EW (Å)
H γ Narrow	40.45 ± 0.13	250 ± 62	240 ± 27	1.37 ± 0.38
Hγ Broad	41.78 ± 0.02	2703 ± 157	978 ± 34	29.79 ± 0.65
[O III] 4364	40.68 ± 0.06	245 ± 63	103 ± 25	2.34 ± 0.19
He II Narrow	40.14 ± 0.16	245 ± 63	103 ± 25	0.77 ± 0.18
He II Broad	41.34 ± 0.05	4224 ± 175	1794 ± 74	12.36 ± 0.76
H β Narrow	40.97 ± 0.04	250 ± 62	240 ± 27	5.67 ± 0.43
Hβ Broad	42.29 ± 0.01	2515 ± 52	1506 ± 52	118.77 ± 1.17
[O III] 5007	41.95 ± 0.01	250 ± 62	240 ± 27	56.82 ± 0.49
He I Narrow	40.08 ± 0.13	245 ± 63	103 ± 25	1.03 ± 0.18
He I Broad	41.42 ± 0.02	2778 ± 130	1180 ± 54	22.89 ± 0.66
[O I] 6300	40.31 ± 0.06	245 ± 63	103 ± 25	1.98 ± 0.19
H α Narrow	41.57 ± 0.01	245 ± 63	103 ± 25	39.40 ± 0.39
Hα Broad	42.73 ± 0.01	2134 ± 64	988 ± 25	572.41 ± 1.27
[N II] 6585	—	—	—	—
[S II] 6718	40.55 ± 0.05	245 ± 63	103 ± 25	3.89 ± 0.31
[S II] 6732	40.49 ± 0.05	245 ± 63	103 ± 25	3.39 ± 0.30

Emission Summary

H α broad SNR	56.17
H β broad SNR	20.53
H γ broad SNR	8.92
AGN frac	0.88
Host frac	0.12
$\log L_{5100, \text{Host}}$	43.02
Fe II/H β	0.34
Fe II/[O III]	0.75

Quality Flags

spurious_hab/hbb	0/0
15100	0
balmer	0
balmer_snr	0
hb_width	1
balmer_width	0