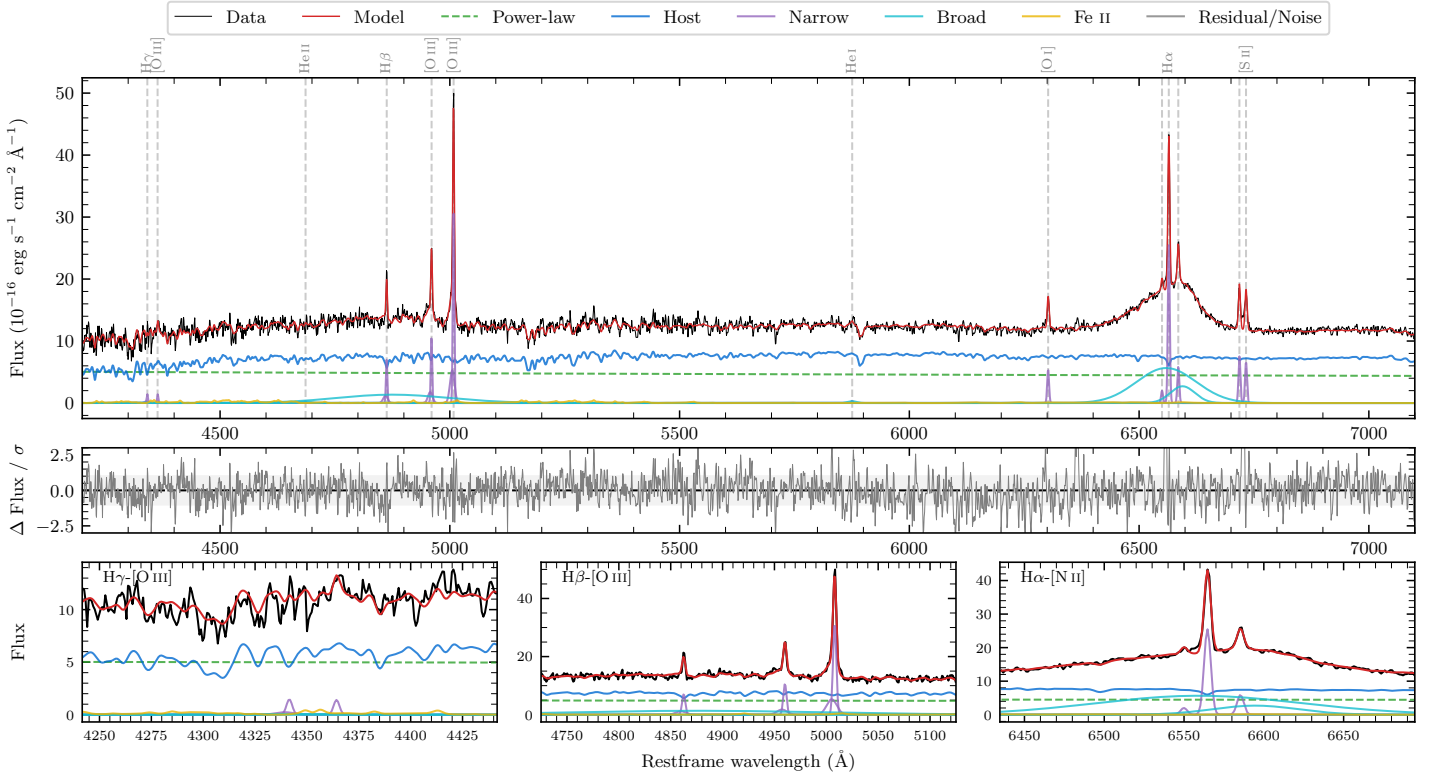
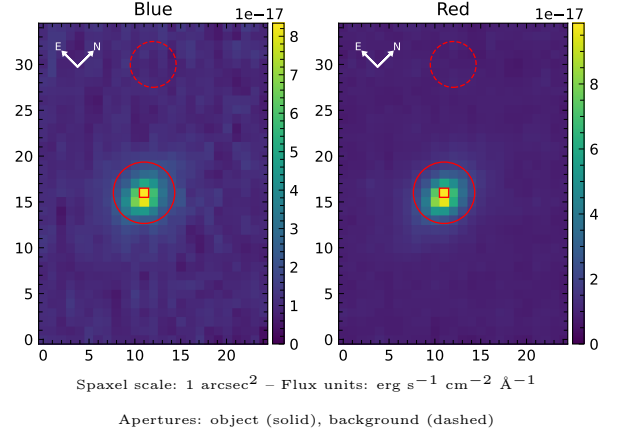


LEDA 161815

Spectrum ID	486962794_sp1	Spectrum type	Sy 1.8+
Alt name	g1958565-422230	Quality flag	good
z	0.0320	AGN reference	6dFGS
RA, Dec	299.7356, -42.3751	MW $E(B - V)$	0.066
MJD	60164.54	Power law α_ν	-1.73 ± 0.07
SNR/ \AA B/R	15.3/28.8	$\log L_{5100, \text{AGN}}$	42.76 ± 0.02
Obs airmass	1.02	$\log H\beta_{\text{Br}}/[\text{O III}]$	< -0.54
SMSS ID	486962794	$\log M_{L5100}/M_\odot$	—
Neighbour	5.2", 2696295810	$\log M_{\text{H}\alpha}/M_\odot$	7.71 ± 0.03
SMSS $\langle r_{6''}^{\text{ap}} \rangle$	15.75 ± 0.08	$\log M_{\text{H}\beta}/M_\odot$	—
2MASS K_{ext}	12.40 ± 0.07	$\log M_{[\text{O III}]} / M_\odot$	—



Emission Line Measurements

Line	$\log L$ (erg s $^{-1}$)	FWHM (km s $^{-1}$)	σ (km s $^{-1}$)	EW (Å)
H γ Narrow	39.28 ± 0.22	253 ± 63	205 ± 26	1.59 ± 0.68
Hγ Broad	—	—	—	—
[O III] 4364	39.08 ± 0.25	229 ± 62	96 ± 25	1.02 ± 0.36
He II Narrow	—	—	—	—
He II Broad	—	—	—	—
H β Narrow	40.01 ± 0.03	253 ± 63	205 ± 26	8.87 ± 0.52
Hβ Broad	< 40.13	—	—	—
[O III] 5007	40.67 ± 0.01	253 ± 63	205 ± 26	41.23 ± 0.56
He I Narrow	38.62 ± 0.37	229 ± 62	96 ± 25	0.38 ± 0.20
He I Broad	39.25 ± 0.22	1178 ± 62	500 ± 25	1.64 ± 0.45
[O I] 6300	39.83 ± 0.03	229 ± 62	96 ± 25	6.25 ± 0.23
H α Narrow	40.52 ± 0.01	229 ± 62	96 ± 25	30.99 ± 0.26
Hα Broad	41.43 ± 0.01	5963 ± 101	2408 ± 25	253.42 ± 1.30
[N II] 6585	39.88 ± 0.03	229 ± 62	96 ± 25	7.19 ± 0.24
[S II] 6718	40.00 ± 0.02	229 ± 62	96 ± 25	9.42 ± 0.25
[S II] 6732	39.94 ± 0.02	229 ± 62	96 ± 25	8.38 ± 0.24

Emission Summary

H α broad SNR	9.54
H β broad SNR	0.00
H γ broad SNR	0.00
AGN frac	0.41
Host frac	0.59
$\log L_{5100, \text{Host}}$	42.92
Fe II/H β	—
Fe II/[O III]	—

Quality Flags

spurious_hab/hbb	0/2
15100	1
balmer	2
balmer_snr	2
hb_width	2
balmer_width	2