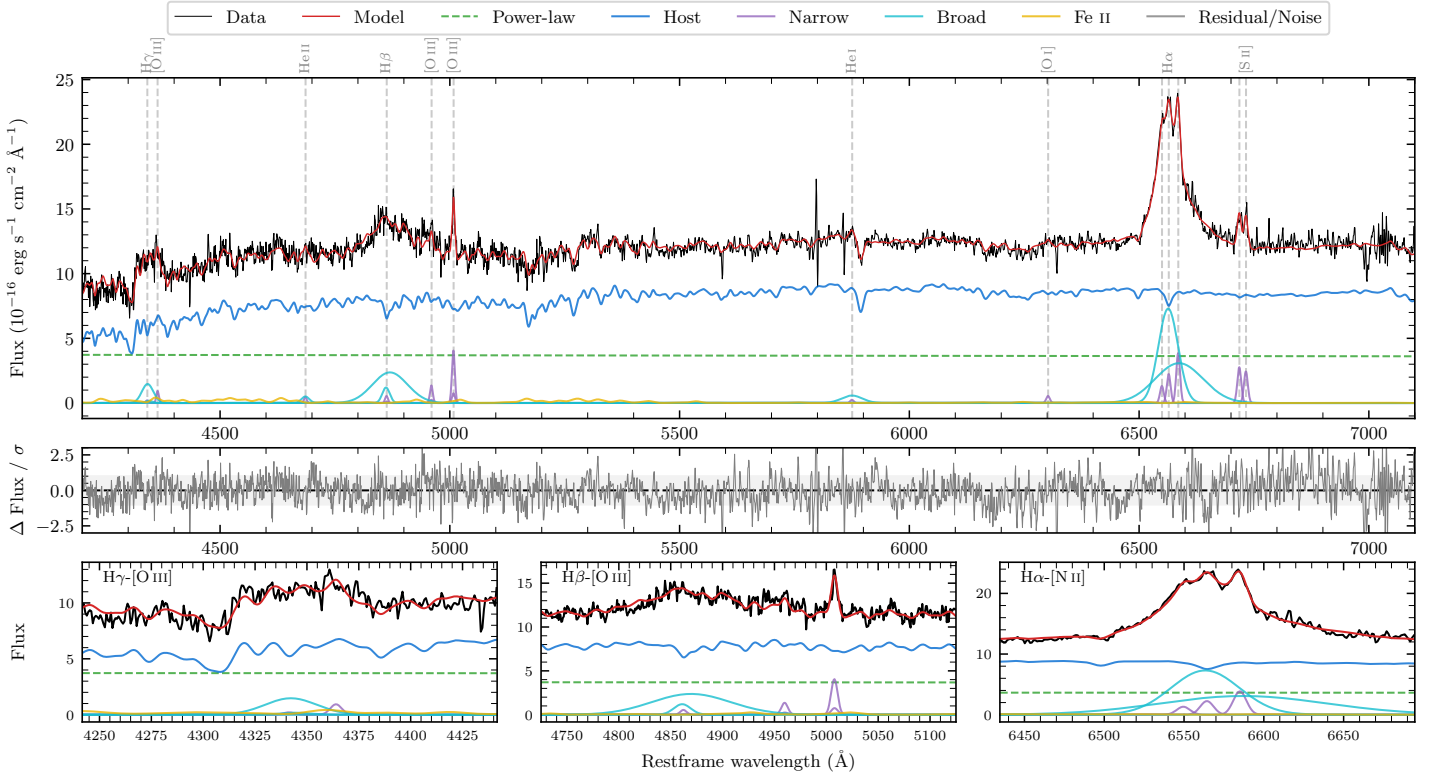
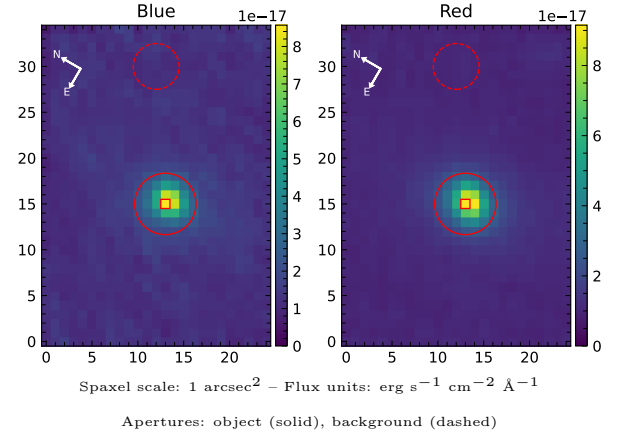


LEDA 164271

Spectrum ID	486696548_sp1	Spectrum type	Sy 1.0
Alt name	g2248428-644439	Quality flag	good
z	0.0867	AGN reference	6dFGS
RA, Dec	342.1785, -64.7440	MW $E(B - V)$	0.025
MJD	60112.81	Power law α_ν	-1.94 ± 0.05
SNR/ \AA B/R	18.2/30.7	$\log L_{5100, \text{AGN}}$	43.55 ± 0.03
Obs airmass	1.20	$\log H\beta_{\text{Br}}/[\text{O III}]$	0.81 ± 0.04
SMSS ID	486696548	$\log M_{L5100}/M_\odot$	7.85 ± 0.16
Neighbour	None $< 15''$	$\log M_{\text{H}\alpha}/M_\odot$	7.54 ± 0.03
SMSS $\langle r_6''_{\text{ap}} \rangle$	16.23 ± 0.04	$\log M_{\text{H}\beta}/M_\odot$	7.84 ± 0.16
2MASS K_{ext}	12.10 ± 0.08	$\log M_{[\text{O III}]} / M_\odot$	7.60 ± 0.16



Emission Line Measurements

Line	$\log L$ (erg s^{-1})	FWHM (km s^{-1})	σ (km s^{-1})	EW (\AA)
H γ Narrow	39.59 ± 0.48	444 ± 63	188 ± 25	0.51 ± 0.50
Hγ Broad	41.02 ± 0.07	1934 ± 155	729 ± 38	14.32 ± 1.12
[O III] 4364	40.12 ± 0.21	444 ± 63	188 ± 25	1.87 ± 0.51
He II Narrow	39.84 ± 0.39	444 ± 63	188 ± 25	0.98 ± 0.46
He II Broad	40.34 ± 0.24	1279 ± 65	543 ± 26	3.17 ± 0.80
H β Narrow	40.05 ± 0.32	444 ± 63	188 ± 25	1.45 ± 0.47
Hβ Broad	41.71 ± 0.02	3699 ± 675	1873 ± 41	73.68 ± 1.80
[O III] 5007	40.90 ± 0.03	444 ± 63	188 ± 25	11.17 ± 0.53
He I Narrow	39.68 ± 0.38	444 ± 63	188 ± 25	0.69 ± 0.40
He I Broad	40.82 ± 0.08	2700 ± 65	1147 ± 26	9.72 ± 0.98
[O I] 6300	40.05 ± 0.15	444 ± 63	188 ± 25	1.62 ± 0.39
H α Narrow	40.68 ± 0.08	444 ± 63	188 ± 25	6.95 ± 0.40
Hα Broad	42.21 ± 0.01	2839 ± 77	1399 ± 25	237.69 ± 1.48
[N II] 6585	40.91 ± 0.04	444 ± 63	188 ± 25	11.96 ± 0.41
[S II] 6718	40.78 ± 0.04	444 ± 63	188 ± 25	8.79 ± 0.47
[S II] 6732	40.73 ± 0.04	444 ± 63	188 ± 25	7.77 ± 0.45

Emission Summary

H α broad SNR	16.10
H β broad SNR	5.61
H γ broad SNR	2.77
AGN frac	0.33
Host frac	0.67
$\log L_{5100, \text{Host}}$	43.86
Fe II/H β	0.29
Fe II/[O III]	1.88

Quality Flags

spurious_hab/hbb	0/0
15100	1
balmer	0
balmer_snr	1
hb_width	1
balmer_width	0