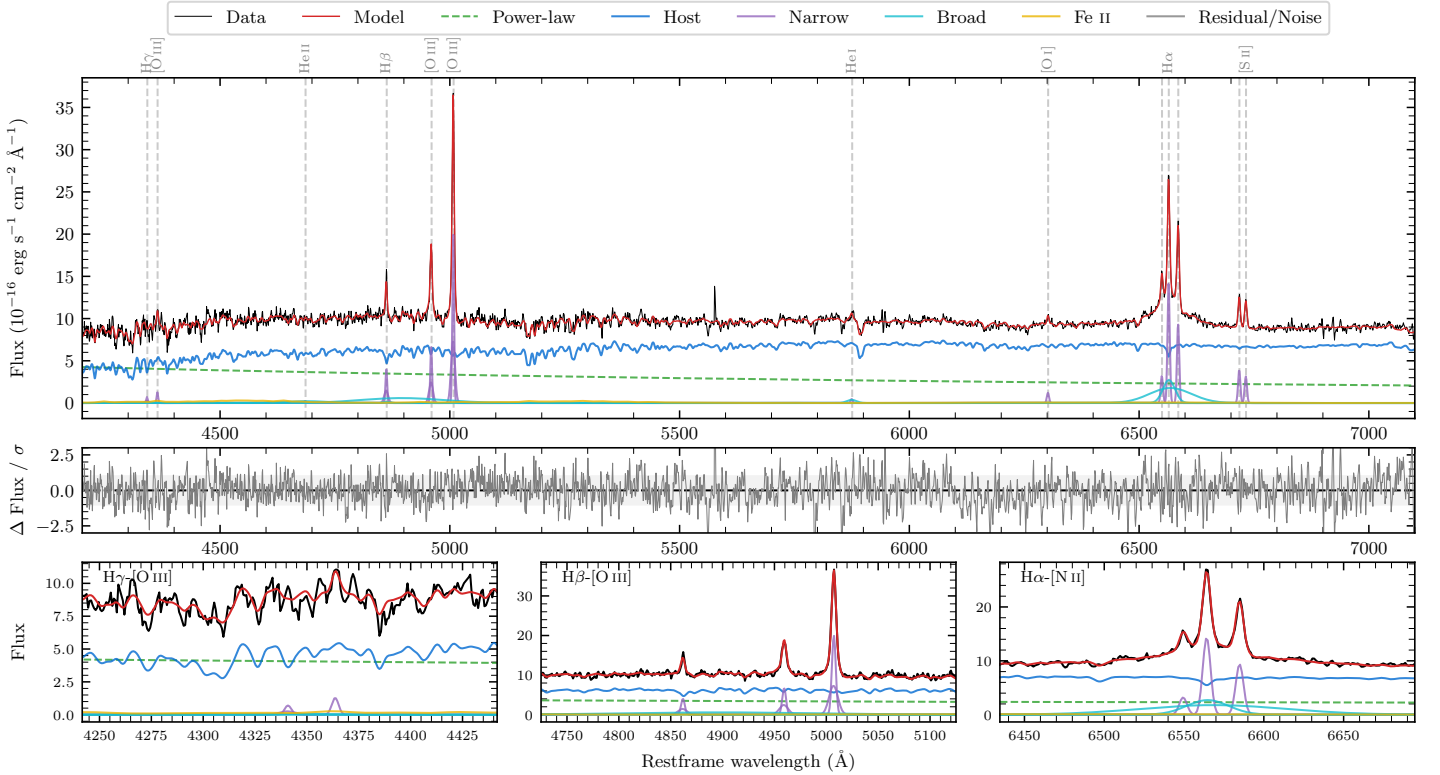
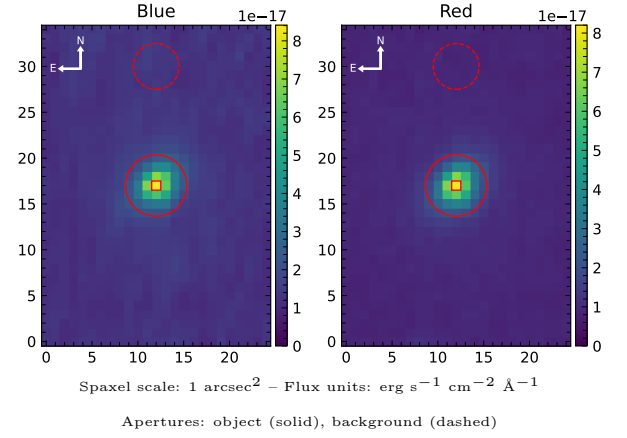


# LEDA 305475

Spectrum ID	486615388_sp1	Spectrum type	Sy 1.8+
Alt name	g2251208-662058	Quality flag	good
$z$	0.0604	AGN reference	6dFGS
RA, Dec	342.8368, -66.3494	MW $E(B-V)$	0.023
MJD	60176.58	Power law $\alpha_\nu$	$-0.63 \pm 0.19$
SNR/ $\text{\AA}$ B/R	19.4/34.0	$\log L_{5100, \text{AGN}}$	$43.17 \pm 0.03$
Obs airmass	1.24	$\log H\beta_{\text{Br}}/[\text{O III}]$	$< -0.92$
SMSS ID	486615388	$\log M_{L5100}/M_\odot$	—
Neighbour	None $< 15''$	$\log M_{\text{H}\alpha}/M_\odot$	$6.77 \pm 0.04$
SMSS $\langle r_6''_{\text{ap}} \rangle$	$16.27 \pm 0.06$	$\log M_{\text{H}\beta}/M_\odot$	—
2MASS $K_{\text{ext}}$	$12.36 \pm 0.12$	$\log M_{[\text{O III}]} / M_\odot$	—



## Emission Line Measurements

Line	$\log L$ (erg s <sup>-1</sup> )	FWHM (km s <sup>-1</sup> )	$\sigma$ (km s <sup>-1</sup> )	EW (Å)
H $\gamma$ Narrow	$39.69 \pm 0.20$	$314 \pm 63$	$192 \pm 25$	$1.36 \pm 0.42$
<b>H<math>\gamma</math> Broad</b>	—	—	—	—
[O III] 4364	$39.69 \pm 0.15$	$266 \pm 63$	$112 \pm 25$	$1.37 \pm 0.28$
He II Narrow	$38.97 \pm 0.45$	$266 \pm 63$	$112 \pm 25$	$0.29 \pm 0.28$
<b>He II Broad</b>	—	—	—	—
H $\beta$ Narrow	$40.50 \pm 0.03$	$314 \pm 63$	$192 \pm 25$	$10.21 \pm 0.46$
<b>H<math>\beta</math> Broad</b>	$< 40.29$	—	—	—
[O III] 5007	$41.21 \pm 0.01$	$314 \pm 63$	$192 \pm 25$	$54.41 \pm 0.52$
He I Narrow	$39.39 \pm 0.21$	$266 \pm 63$	$112 \pm 25$	$1.02 \pm 0.25$
<b>He I Broad</b>	<b><math>39.97 \pm 0.13</math></b>	<b><math>1246 \pm 63</math></b>	<b><math>529 \pm 25</math></b>	<b><math>3.87 \pm 0.53</math></b>
[O I] 6300	$39.82 \pm 0.06$	$266 \pm 63$	$112 \pm 25$	$3.09 \pm 0.25$
H $\alpha$ Narrow	$40.92 \pm 0.01$	$266 \pm 63$	$112 \pm 25$	$40.31 \pm 0.36$
<b>H<math>\alpha</math> Broad</b>	<b><math>41.44 \pm 0.01</math></b>	<b><math>2024 \pm 89</math></b>	<b><math>1328 \pm 26</math></b>	<b><math>134.56 \pm 1.35</math></b>
[N II] 6585	$40.73 \pm 0.01$	$266 \pm 63$	$112 \pm 25$	$26.52 \pm 0.34$
[S II] 6718	$40.36 \pm 0.02$	$266 \pm 63$	$112 \pm 25$	$11.62 \pm 0.30$
[S II] 6732	$40.27 \pm 0.02$	$266 \pm 63$	$112 \pm 25$	$9.35 \pm 0.31$

## Emission Summary

H $\alpha$ broad SNR	9.19
H $\beta$ broad SNR	0.28
H $\gamma$ broad SNR	0.00
AGN frac	0.36
Host frac	0.64
$\log L_{5100, \text{Host}}$	43.42
Fe II/H $\beta$	—
Fe II/[O III]	—

## Quality Flags

spurious_hab/hbb	0/2
15100	1
balmer	2
balmer_snr	2
hb_width	2
balmer_width	2