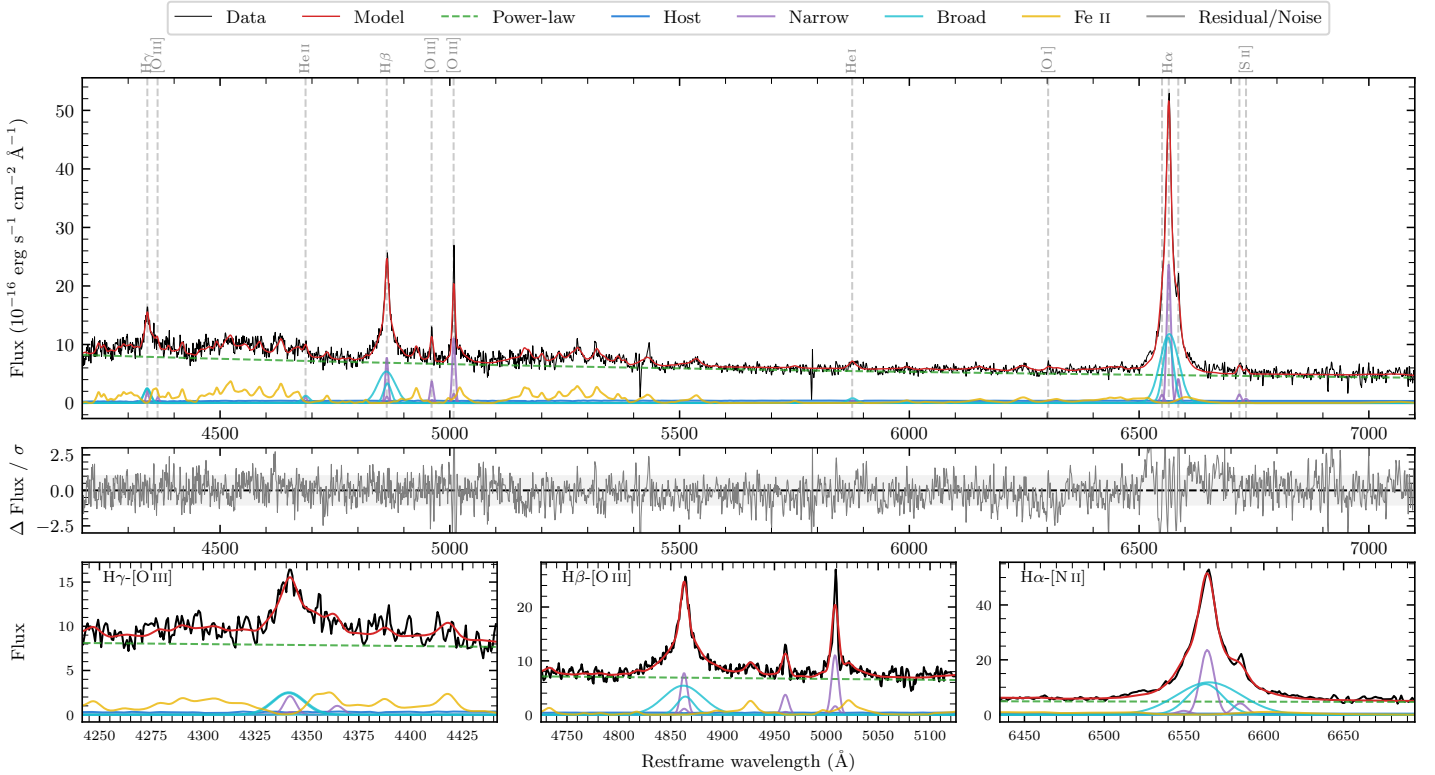
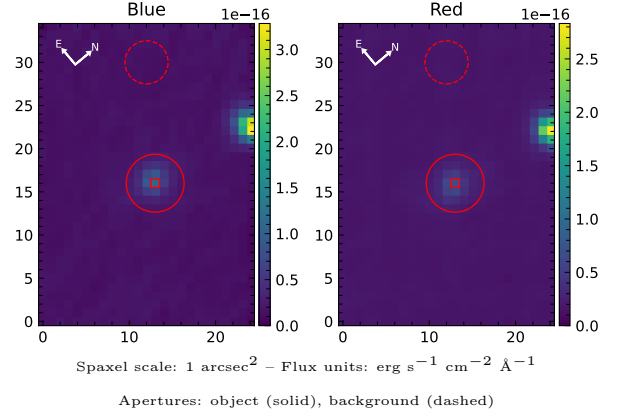


# 2MASS J21450570–6922309

Spectrum ID	486517428_sp1	Spectrum type	Sy 1.2
Alt name	g2145058–692231	Quality flag	good
$z$	0.0891	AGN reference	6dFGS
RA, Dec	326.2738, –69.3752	MW $E(B - V)$	0.030
MJD	60086.8	Power law $\alpha_\nu$	$-0.78 \pm 0.08$
SNR/ $\text{\AA}$ B/R	9.1/10.0	$\log L_{5100, \text{AGN}}$	$43.82 \pm 0.02$
Obs airmass	1.27	$\log H\beta_{\text{Br}}/[\text{O III}]$	$0.49 \pm 0.04$
SMSS ID	486517428	$\log M_{L5100}/M_\odot$	$7.40 \pm 0.11$
Neighbour	12.8", 486517398	$\log M_{\text{H}\alpha}/M_\odot$	$7.09 \pm 0.11$
SMSS $\langle r_6''_{\text{ap}} \rangle$	$16.68 \pm 0.12$	$\log M_{\text{H}\beta}/M_\odot$	$7.34 \pm 0.11$
2MASS $K_{\text{ext}}$	$13.13 \pm 0.06$	$\log M_{[\text{O III}]} / M_\odot$	$7.26 \pm 0.11$



## Emission Line Measurements

Line	$\log L$ ( $\text{erg s}^{-1}$ )	FWHM ( $\text{km s}^{-1}$ )	$\sigma$ ( $\text{km s}^{-1}$ )	EW ( $\text{\AA}$ )
H $\gamma$ Narrow	$40.58 \pm 0.19$	$473 \pm 83$	$201 \pm 34$	$2.42 \pm 0.39$
<b>H<math>\gamma</math> Broad</b>	<b><math>41.33 \pm 0.06</math></b>	<b><math>1235 \pm 72</math></b>	<b><math>469 \pm 26</math></b>	<b><math>13.07 \pm 0.64</math></b>
[O III] 4364	$40.19 \pm 0.26$	$473 \pm 83$	$200 \pm 35$	$1.02 \pm 0.37$
He II Narrow	$40.22 \pm 0.31$	$473 \pm 83$	$200 \pm 35$	$1.22 \pm 0.36$
<b>He II Broad</b>	<b><math>40.75 \pm 0.16</math></b>	<b><math>1235 \pm 72</math></b>	<b><math>524 \pm 29</math></b>	<b><math>3.88 \pm 0.59</math></b>
H $\beta$ Narrow	$41.21 \pm 0.11$	$473 \pm 83$	$201 \pm 34$	$11.43 \pm 0.42$
<b>H<math>\beta</math> Broad</b>	<b><math>41.85 \pm 0.02</math></b>	<b><math>1940 \pm 235</math></b>	<b><math>862 \pm 42</math></b>	<b><math>51.32 \pm 0.99</math></b>
[O III] 5007	$41.36 \pm 0.03$	$473 \pm 83$	$201 \pm 34$	$17.43 \pm 0.45$
He I Narrow	$39.97 \pm 0.35$	$473 \pm 83$	$200 \pm 35$	$0.91 \pm 0.38$
<b>He I Broad</b>	<b><math>40.66 \pm 0.13</math></b>	<b><math>1193 \pm 65</math></b>	<b><math>506 \pm 26</math></b>	<b><math>4.15 \pm 0.58</math></b>
[O I] 6300	$39.97 \pm 0.28$	$473 \pm 83$	$200 \pm 35$	$0.97 \pm 0.41$
H $\alpha$ Narrow	$41.75 \pm 0.10$	$473 \pm 83$	$200 \pm 35$	$59.27 \pm 0.51$
<b>H<math>\alpha</math> Broad</b>	<b><math>42.29 \pm 0.03</math></b>	<b><math>1590 \pm 196</math></b>	<b><math>662 \pm 29</math></b>	<b><math>206.78 \pm 1.02</math></b>
[N II] 6585	$40.98 \pm 0.07$	$473 \pm 83$	$200 \pm 35$	$10.39 \pm 0.48$
[S II] 6718	$40.53 \pm 0.11$	$473 \pm 83$	$200 \pm 35$	$3.86 \pm 0.54$
[S II] 6732	$40.24 \pm 0.17$	$473 \pm 83$	$200 \pm 35$	$1.97 \pm 0.56$

## Emission Summary

H $\alpha$ broad SNR	24.83
H $\beta$ broad SNR	9.51
H $\gamma$ broad SNR	5.62
AGN frac	0.95
Host frac	0.05
$\log L_{5100, \text{Host}}$	42.53
Fe II/H $\beta$	1.69
Fe II/[O III]	5.16

## Quality Flags

spurious_hab/hbb	0/0
15100	0
balmer	0
balmer_snr	0
hb_width	0
balmer_width	0