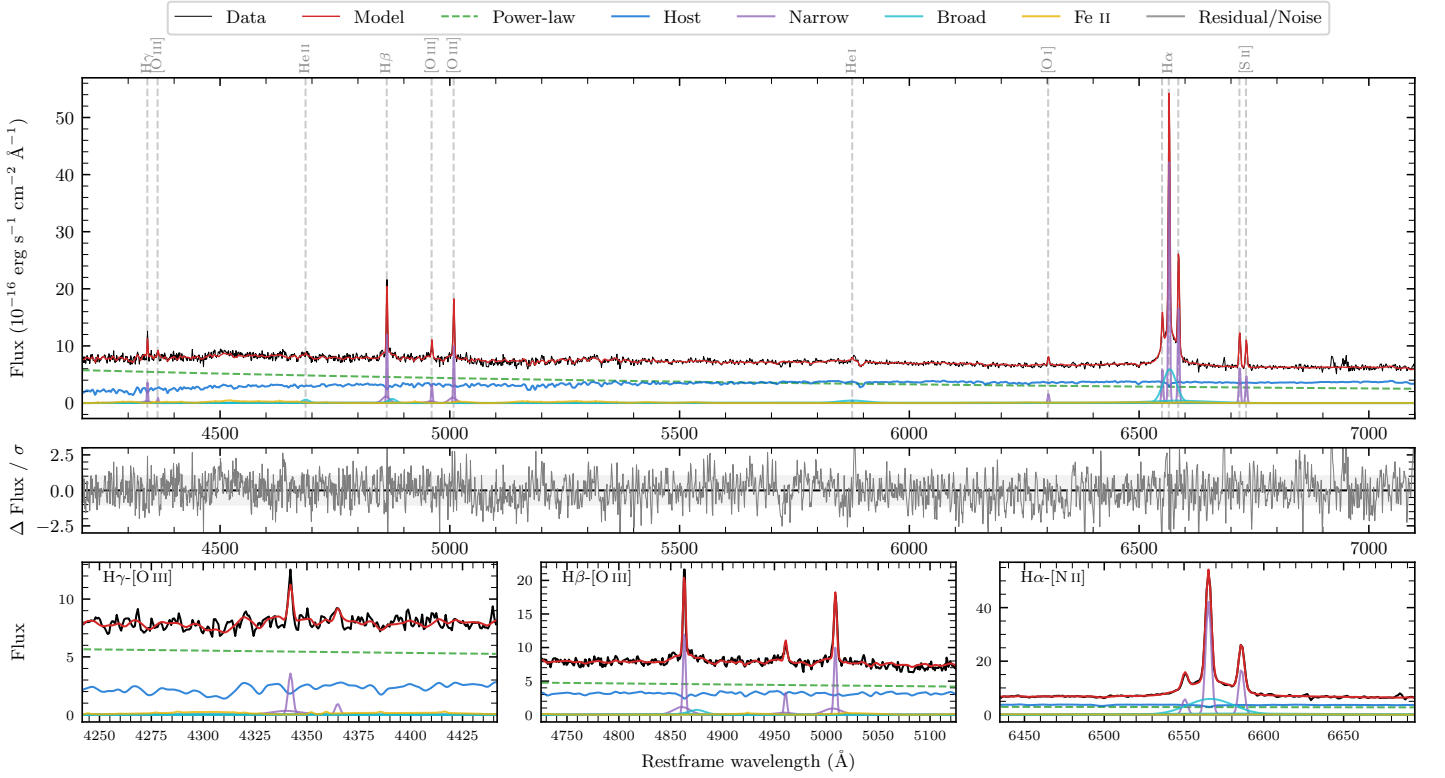
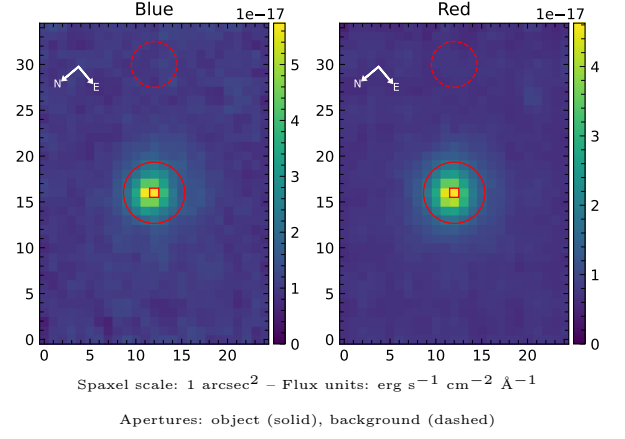


2MASS J22032032–6016458

Spectrum ID	486455205_sp1	Spectrum type	Sy 1.5
Alt name	g2203203–601646	Quality flag	good
z	0.0982	AGN reference	6dFGS
RA, Dec	330.8347, –60.2795	MW $E(B - V)$	0.034
MJD	60165.62	Power law α_ν	-0.41 ± 0.10
SNR/ \AA B/R	19.7/25.9	$\log L_{5100, \text{AGN}}$	43.72 ± 0.02
Obs airmass	1.14	$\log H\beta_{\text{Br}}/[\text{O III}]$	-0.43 ± 0.09
SMSS ID	486455205	$\log M_{L5100}/M_\odot$	7.01 ± 0.08
Neighbour	None $< 15''$	$\log M_{\text{H}\alpha}/M_\odot$	6.85 ± 0.04
SMSS $\langle r_6''_{\text{ap}} \rangle$	16.44 ± 0.03	$\log M_{\text{H}\beta}/M_\odot$	6.48 ± 0.10
2MASS K_{ext}	12.71 ± 0.13	$\log M_{[\text{O III}]} / M_\odot$	6.81 ± 0.08



Emission Line Measurements

Line	$\log L$ (erg s ⁻¹)	FWHM (km s ⁻¹)	σ (km s ⁻¹)	EW (Å)
H γ Narrow	40.64 ± 0.05	200 ± 62	319 ± 28	3.30 ± 0.35
Hγ Broad	—	—	—	—
[O III] 4364	39.86 ± 0.19	196 ± 62	80 ± 25	0.55 ± 0.14
He II Narrow	39.27 ± 0.45	196 ± 62	80 ± 25	0.16 ± 0.14
He II Broad	40.49 ± 0.11	1179 ± 62	500 ± 25	2.61 ± 0.39
H β Narrow	41.23 ± 0.02	200 ± 62	319 ± 28	15.20 ± 0.41
Hβ Broad	40.72 ± 0.09	1302 ± 111	491 ± 48	4.50 ± 0.45
[O III] 5007	41.15 ± 0.02	200 ± 62	319 ± 28	13.35 ± 0.47
He I Narrow	39.69 ± 0.17	196 ± 62	80 ± 25	0.59 ± 0.14
He I Broad	40.95 ± 0.05	3674 ± 70	1560 ± 28	10.98 ± 0.69
[O I] 6300	40.24 ± 0.05	196 ± 62	80 ± 25	2.37 ± 0.18
H α Narrow	41.69 ± 0.01	196 ± 62	80 ± 25	71.87 ± 0.27
Hα Broad	41.87 ± 0.01	1630 ± 65	788 ± 38	108.48 ± 1.17
[N II] 6585	41.30 ± 0.01	196 ± 62	80 ± 25	29.34 ± 0.24
[S II] 6718	40.88 ± 0.01	196 ± 62	80 ± 25	11.46 ± 0.24
[S II] 6732	40.75 ± 0.02	196 ± 62	80 ± 25	8.55 ± 0.21

Emission Summary

H α broad SNR	16.26
H β broad SNR	2.16
H γ broad SNR	0.00
AGN frac	0.59
Host frac	0.42
$\log L_{5100, \text{Host}}$	43.57
Fe II/H β	3.99
Fe II/[O III]	1.40

Quality Flags

spurious_hab/hbb	0/0
15100	0
balmer	1
balmer_snr	2
hb_width	0
balmer_width	2