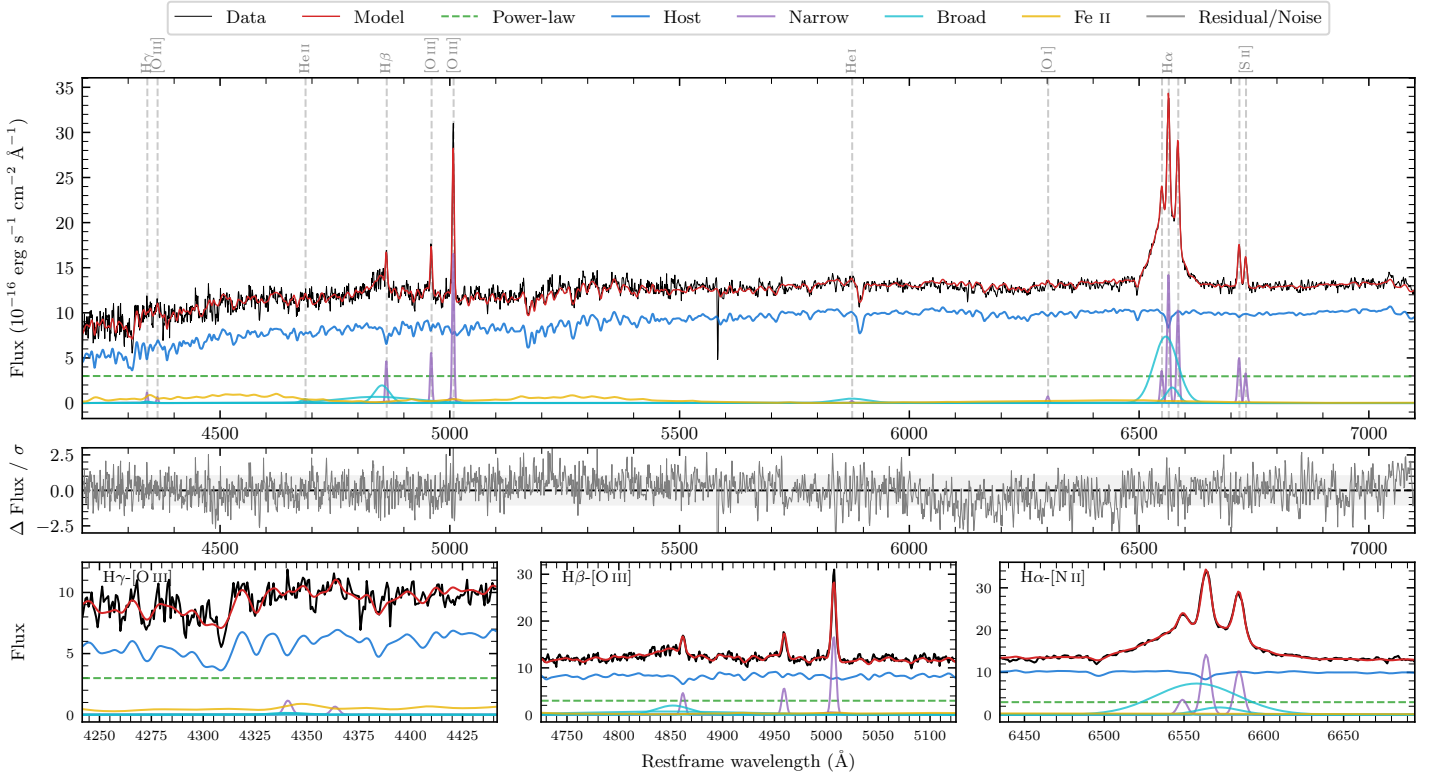
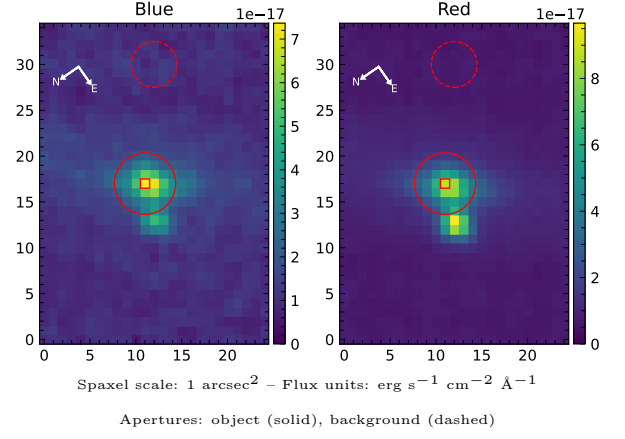


# LEDA 128189

Spectrum ID	486418548_sp1	Spectrum type	Sy 1.2
Alt name	g2132306-592355	Quality flag	good
$z$	0.0286	AGN reference	6dFGS
RA, Dec	323.1275, -59.3988	MW $E(B - V)$	0.030
MJD	60167.59	Power law $\alpha_\nu$	$-1.98 \pm 0.02$
SNR/ $\text{\AA}$ B/R	18.0/37.8	$\log L_{5100, \text{AGN}}$	$42.46 \pm 0.03$
Obs airmass	1.13	$\log H\beta_{\text{Br}}/[\text{O III}]$	$0.33 \pm 0.04$
SMSS ID	486418548	$\log M_{L5100}/M_\odot$	$7.20 \pm 0.06$
Neighbour	3.5", 486418552	$\log M_{H\alpha}/M_\odot$	$6.76 \pm 0.05$
SMSS $\langle r_6''_{\text{ap}} \rangle$	$15.69 \pm 0.09$	$\log M_{H\beta}/M_\odot$	$7.17 \pm 0.07$
2MASS $K_{\text{ext}}$	$11.56 \pm 0.07$	$\log M_{[\text{O III}]} / M_\odot$	$7.13 \pm 0.07$



## Emission Line Measurements

Line	$\log L$ ( $\text{erg s}^{-1}$ )	FWHM ( $\text{km s}^{-1}$ )	$\sigma$ ( $\text{km s}^{-1}$ )	EW ( $\text{\AA}$ )
H $\gamma$ Narrow	$39.09 \pm 0.24$	$316 \pm 63$	$249 \pm 43$	$2.15 \pm 1.15$
<b>H<math>\gamma</math> Broad</b>	—	—	—	—
[O III] 4364	$38.79 \pm 0.32$	$311 \pm 63$	$130 \pm 25$	$1.08 \pm 0.55$
He II Narrow	$38.63 \pm 0.41$	$311 \pm 63$	$130 \pm 25$	$0.75 \pm 0.48$
<b>He II Broad</b>	<b><math>39.28 \pm 0.25</math></b>	<b><math>1410 \pm 65</math></b>	<b><math>598 \pm 26</math></b>	<b><math>3.37 \pm 1.06</math></b>
H $\beta$ Narrow	$39.73 \pm 0.05$	$316 \pm 63$	$250 \pm 43$	$9.59 \pm 0.94$
<b>H<math>\beta</math> Broad</b>	<b><math>40.64 \pm 0.03</math></b>	<b><math>2995 \pm 157</math></b>	<b><math>2809 \pm 108</math></b>	<b><math>76.16 \pm 3.00</math></b>
[O III] 5007	$40.31 \pm 0.02$	$316 \pm 63$	$250 \pm 43$	$35.83 \pm 0.96$
He I Narrow	$38.48 \pm 0.34$	$311 \pm 63$	$130 \pm 25$	$0.53 \pm 0.28$
<b>He I Broad</b>	<b><math>39.94 \pm 0.06</math></b>	<b><math>4384 \pm 64</math></b>	<b><math>1862 \pm 26</math></b>	<b><math>15.35 \pm 1.27</math></b>
[O I] 6300	$39.00 \pm 0.12$	$311 \pm 63$	$130 \pm 25$	$1.76 \pm 0.29$
H $\alpha$ Narrow	$40.30 \pm 0.01$	$311 \pm 63$	$130 \pm 25$	$35.18 \pm 0.37$
<b>H<math>\alpha</math> Broad</b>	<b><math>41.02 \pm 0.01</math></b>	<b><math>2656 \pm 67</math></b>	<b><math>995 \pm 25</math></b>	<b><math>185.45 \pm 1.01</math></b>
[N II] 6585	$40.16 \pm 0.01$	$311 \pm 63$	$130 \pm 25$	$25.87 \pm 0.36$
[S II] 6718	$39.85 \pm 0.02$	$311 \pm 63$	$130 \pm 25$	$12.63 \pm 0.34$
[S II] 6732	$39.67 \pm 0.03$	$311 \pm 63$	$130 \pm 25$	$8.39 \pm 0.33$

## Emission Summary

H $\alpha$ broad SNR	13.21
H $\beta$ broad SNR	4.06
H $\gamma$ broad SNR	0.58
AGN frac	0.27
Host frac	0.73
$\log L_{5100, \text{Host}}$	42.89
Fe II/H $\beta$	1.12
Fe II/[O III]	2.37

## Quality Flags

spurious_hab/hbb	0/0
15100	1
balmer	0
balmer_snr	2
hb_width	2
balmer_width	0