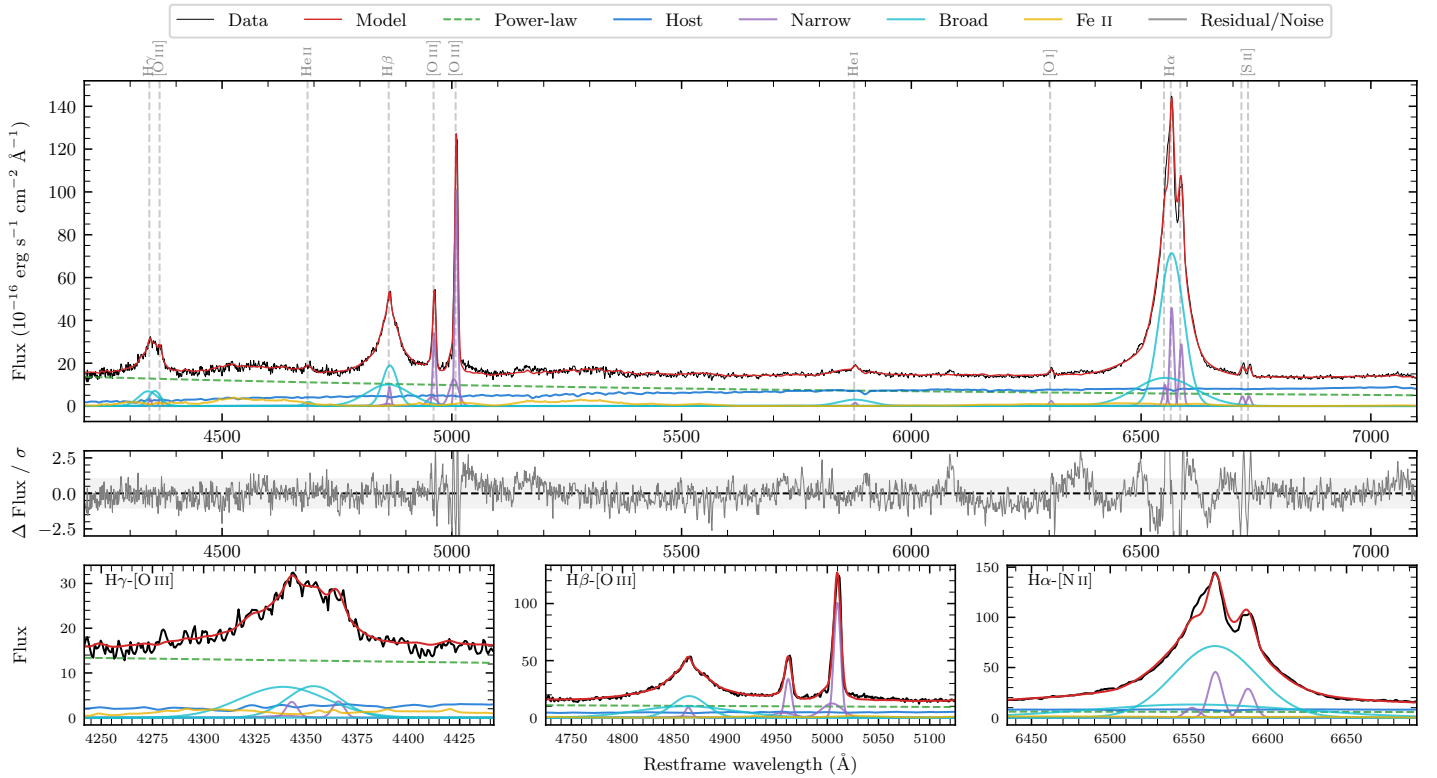
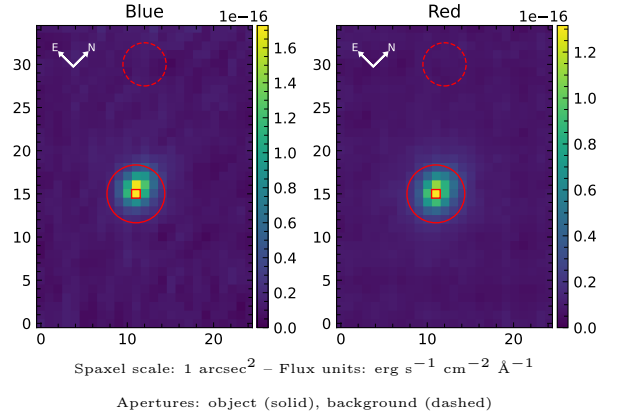


# LEDA 89176

Spectrum ID	486390513_sp1	Spectrum type	Sy 1.5
Alt name	g2136231-622401	Quality flag	good
$z$	0.0589	AGN reference	6dFGS
RA, Dec	324.0963, -62.4001	MW $E(B - V)$	0.031
MJD	60167.6	Power law $\alpha_\nu$	$-0.09 \pm 0.24$
SNR/ $\text{\AA}$ B/R	10.2/17.8	$\log L_{5100, \text{AGN}}$	$43.60 \pm 0.03$
Obs airmass	1.17	$\log H\beta_{\text{Br}}/[\text{O III}]$	$0.24 \pm 0.01$
SMSS ID	486390513	$\log M_{L5100}/M_\odot$	$7.72 \pm 0.03$
Neighbour	8.7", 2694776100	$\log M_{\text{H}\alpha}/M_\odot$	$7.96 \pm 0.04$
SMSS $\langle r_6''_{\text{ap}} \rangle$	$14.47 \pm 0.09$	$\log M_{\text{H}\beta}/M_\odot$	$7.93 \pm 0.03$
2MASS $K_{\text{ext}}$	$11.39 \pm 0.04$	$\log M_{[\text{O III}]} / M_\odot$	$8.00 \pm 0.03$



## Emission Line Measurements

Line	$\log L$ ( $\text{erg s}^{-1}$ )	FWHM ( $\text{km s}^{-1}$ )	$\sigma$ ( $\text{km s}^{-1}$ )	EW ( $\text{\AA}$ )
H $\gamma$ Narrow	$40.48 \pm 0.17$	$498 \pm 63$	$383 \pm 26$	$2.88 \pm 0.72$
<b>H<math>\gamma</math> Broad</b>	<b><math>41.72 \pm 0.02</math></b>	<b><math>2950 \pm 189</math></b>	<b><math>1168 \pm 44</math></b>	<b><math>49.39 \pm 1.20</math></b>
[O III] 4364	$40.36 \pm 0.16$	$465 \pm 63$	$196 \pm 25$	$2.19 \pm 0.43$
He II Narrow	$39.76 \pm 0.40$	$465 \pm 63$	$196 \pm 25$	$0.63 \pm 0.41$
<b>He II Broad</b>	<b><math>40.65 \pm 0.13</math></b>	<b><math>1487 \pm 215</math></b>	<b><math>631 \pm 91</math></b>	<b><math>4.62 \pm 0.77</math></b>
H $\beta$ Narrow	$40.94 \pm 0.06$	$498 \pm 63$	$383 \pm 26$	$10.16 \pm 0.84$
<b>H<math>\beta</math> Broad</b>	<b><math>42.24 \pm 0.01</math></b>	<b><math>3138 \pm 95</math></b>	<b><math>1733 \pm 46</math></b>	<b><math>202.35 \pm 1.86</math></b>
[O III] 5007	$42.00 \pm 0.01$	$498 \pm 63$	$383 \pm 26$	$124.60 \pm 0.93$
He I Narrow	$40.13 \pm 0.12$	$465 \pm 63$	$196 \pm 25$	$2.28 \pm 0.38$
<b>He I Broad</b>	<b><math>41.38 \pm 0.02</math></b>	<b><math>4410 \pm 168</math></b>	<b><math>1873 \pm 71</math></b>	<b><math>40.52 \pm 1.23</math></b>
[O I] 6300	$40.34 \pm 0.06$	$465 \pm 63$	$196 \pm 25$	$4.21 \pm 0.41$
H $\alpha$ Narrow	$41.63 \pm 0.01$	$465 \pm 63$	$196 \pm 25$	$89.89 \pm 1.04$
<b>H<math>\alpha</math> Broad</b>	<b><math>42.78 \pm 0.01</math></b>	<b><math>3100 \pm 65</math></b>	<b><math>1392 \pm 25</math></b>	<b><math>1245.26 \pm 2.35</math></b>
[N II] 6585	$41.44 \pm 0.02$	$465 \pm 63$	$196 \pm 25$	$57.42 \pm 0.94$
[S II] 6718	$40.63 \pm 0.03$	$465 \pm 63$	$196 \pm 25$	$9.35 \pm 0.55$
[S II] 6732	$40.64 \pm 0.03$	$465 \pm 63$	$196 \pm 25$	$9.62 \pm 0.51$

## Emission Summary

H $\alpha$ broad SNR	51.46
H $\beta$ broad SNR	17.70
H $\gamma$ broad SNR	7.82
AGN frac	0.65
Host frac	0.35
$\log L_{5100, \text{Host}}$	43.33
Fe II/H $\beta$	0.38
Fe II/[O III]	0.66

## Quality Flags

spurious_hab/hbb	0/0
15100	0
balmer	0
balmer_snr	0
hb_width	1
balmer_width	0