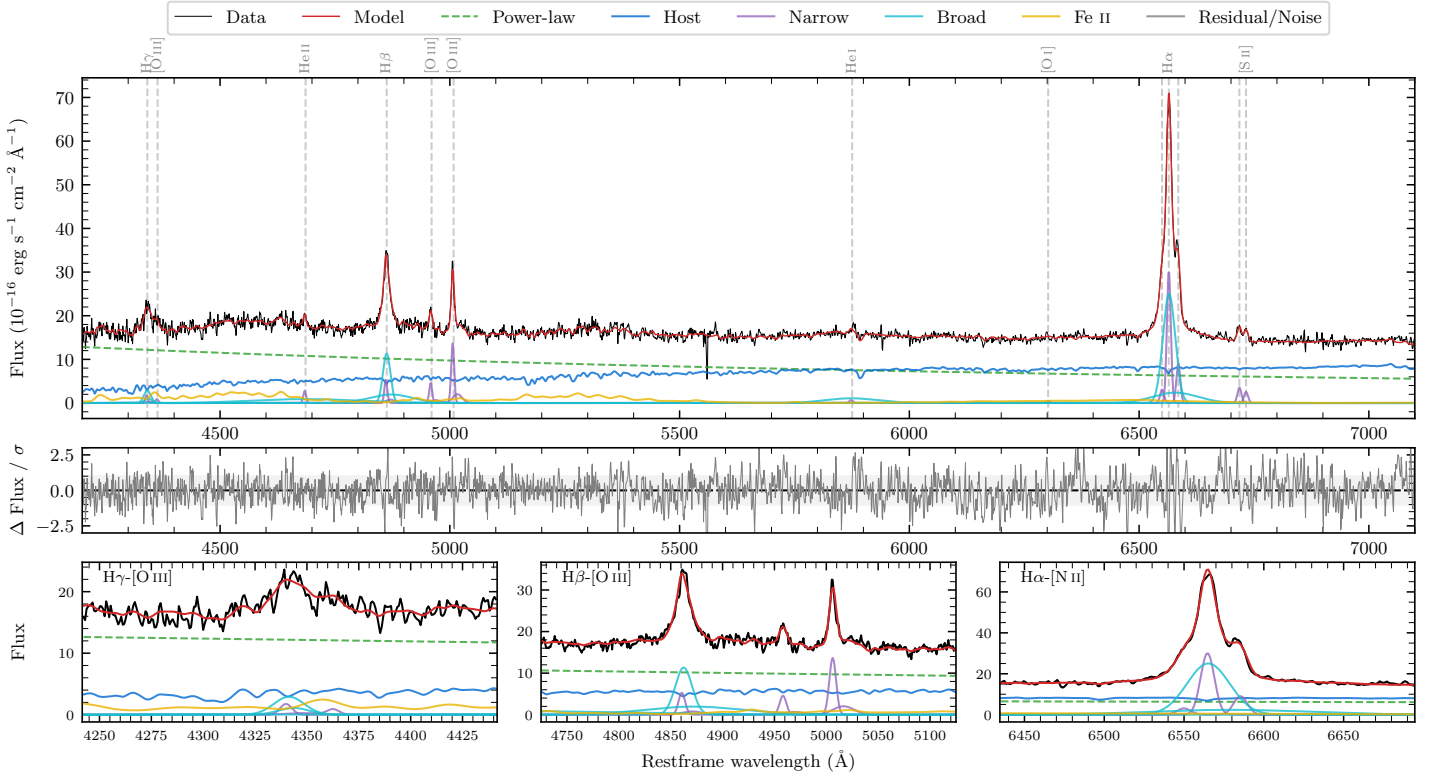
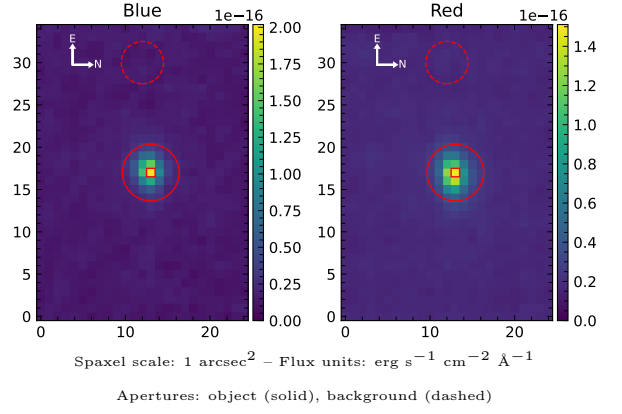


LEDA 343763

Spectrum ID	486387854_sp1	Spectrum type	Sy 1.2
Alt name	g2135295-623007	Quality flag	good
z	0.0605	AGN reference	6dFGS
RA, Dec	323.8729, -62.5020	MW $E(B - V)$	0.033
MJD	60080.8	Power law α_ν	-0.41 ± 0.15
SNR/ \AA B/R	17.2/25.9	$\log L_{5100, \text{AGN}}$	43.63 ± 0.02
Obs airmass	1.18	$\log H\beta_{\text{Br}}/[\text{O III}]$	0.45 ± 0.03
SMSS ID	486387854	$\log M_{L5100}/M_\odot$	6.99 ± 0.02
Neighbour	None $< 15''$	$\log M_{H\alpha}/M_\odot$	6.89 ± 0.04
SMSS $\langle r_6''_{\text{ap}} \rangle$	15.82 ± 0.04	$\log M_{H\beta}/M_\odot$	6.91 ± 0.03
2MASS K_{ext}	12.13 ± 0.06	$\log M_{[\text{O III}]} / M_\odot$	6.85 ± 0.03



Emission Line Measurements

Line	$\log L$ (erg s $^{-1}$)	FWHM (km s $^{-1}$)	σ (km s $^{-1}$)	EW (Angstrom)
H γ Narrow	40.23 ± 0.29	493 ± 63	471 ± 31	1.58 ± 0.43
Hγ Broad	40.87 ± 0.08	1197 ± 64	409 ± 25	6.42 ± 0.42
[O III] 4364	39.76 ± 0.29	462 ± 63	196 ± 25	0.53 ± 0.24
He II Narrow	40.31 ± 0.09	462 ± 63	196 ± 25	2.10 ± 0.25
He II Broad	41.40 ± 0.06	17659 ± 63	7499 ± 25	26.11 ± 1.64
H β Narrow	40.76 ± 0.09	493 ± 63	471 ± 31	6.42 ± 0.46
Hβ Broad	41.64 ± 0.02	1323 ± 32	1218 ± 45	47.94 ± 1.01
[O III] 5007	41.19 ± 0.02	493 ± 63	471 ± 31	17.82 ± 0.48
He I Narrow	39.80 ± 0.19	462 ± 63	196 ± 25	0.95 ± 0.25
He I Broad	41.16 ± 0.04	6693 ± 70	2842 ± 28	21.42 ± 1.01
[O I] 6300	39.69 ± 0.21	462 ± 63	196 ± 25	0.82 ± 0.25
H α Narrow	41.49 ± 0.01	462 ± 63	196 ± 25	54.35 ± 0.42
Hα Broad	42.03 ± 0.01	1527 ± 65	725 ± 25	190.77 ± 1.08
[N II] 6585	40.96 ± 0.02	462 ± 63	196 ± 25	16.48 ± 0.37
[S II] 6718	40.57 ± 0.03	462 ± 63	196 ± 25	6.79 ± 0.31
[S II] 6732	40.43 ± 0.04	462 ± 63	196 ± 25	4.95 ± 0.31

Emission Summary

H α broad SNR	27.88
H β broad SNR	13.52
H γ broad SNR	4.29
AGN frac	0.63
Host frac	0.37
$\log L_{5100, \text{Host}}$	43.39
Fe II/H β	1.29
Fe II/[O III]	3.62

Quality Flags

spurious_hab/hbb	0/0
15100	0
balmer	0
balmer_snr	0
hb_width	2
balmer_width	2