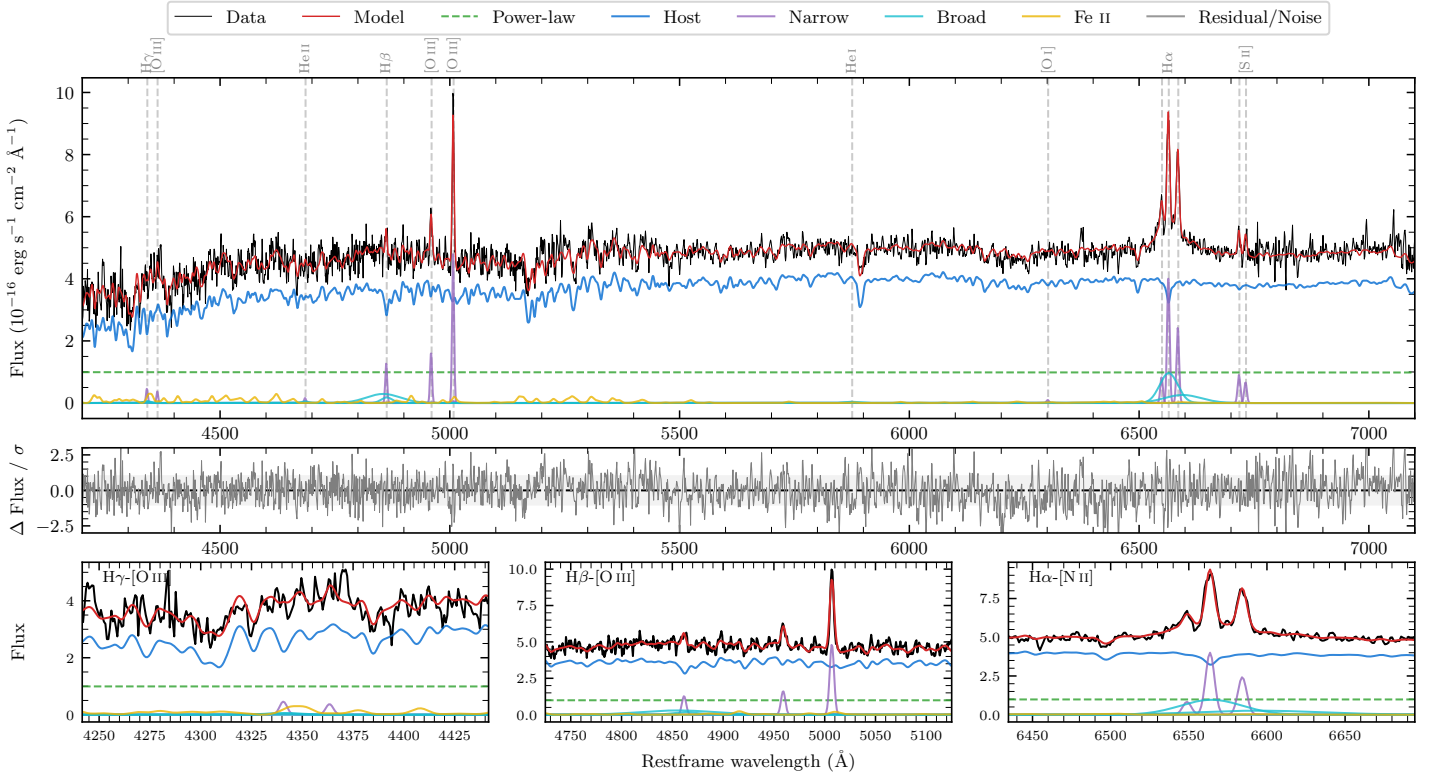
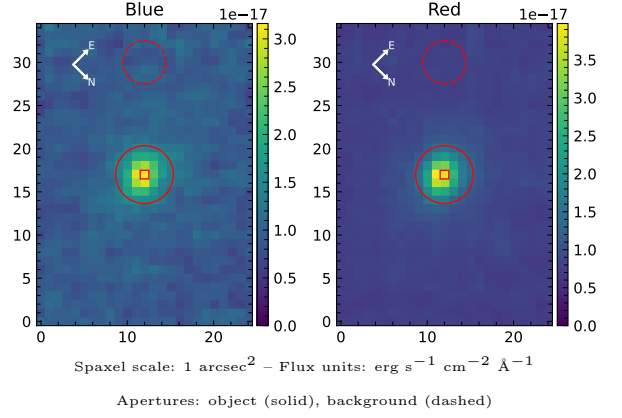


LEDA 327393

Spectrum ID	486017094_sp1	Spectrum type	Sy 1.5
Alt name	g2052301-635820	Quality flag	good
z	0.0768	AGN reference	6dFGS
RA, Dec	313.1255, -63.9721	MW $E(B - V)$	0.035
MJD	60164.57	Power law α_ν	-1.98 ± 0.02
SNR/ \AA B/R	13.8/25.1	$\log L_{5100, \text{AGN}}$	42.87 ± 0.04
Obs airmass	1.19	$\log H\beta_{\text{Br}}/[\text{O III}]$	0.09 ± 0.08
SMSS ID	486017094	$\log M_{L5100}/M_\odot$	7.51 ± 0.32
Neighbour	9.1", 486017082	$\log M_{\text{H}\alpha}/M_\odot$	6.70 ± 0.05
SMSS $\langle r_6''_{\text{ap}} \rangle$	16.74 ± 0.02	$\log M_{\text{H}\beta}/M_\odot$	7.34 ± 0.32
2MASS K_{ext}	13.05 ± 0.12	$\log M_{[\text{O III}]} / M_\odot$	7.42 ± 0.32



Emission Line Measurements

Line	$\log L$ (erg s $^{-1}$)	FWHM (km s $^{-1}$)	σ (km s $^{-1}$)	EW (Angstrom)
H γ Narrow	39.54 ± 0.27	307 ± 63	130 ± 25	2.37 ± 0.90
Hγ Broad	—	—	—	—
[O III] 4364	39.44 ± 0.29	303 ± 62	128 ± 25	1.88 ± 0.79
He II Narrow	39.10 ± 0.47	303 ± 62	128 ± 25	0.88 ± 0.77
He II Broad	—	—	—	—
H β Narrow	40.03 ± 0.08	307 ± 63	130 ± 25	7.38 ± 0.86
Hβ Broad	40.71 ± 0.07	3518 ± 1111	1727 ± 102	35.42 ± 3.21
[O III] 5007	40.62 ± 0.02	307 ± 63	130 ± 25	28.80 ± 0.97
He I Narrow	—	—	—	—
He I Broad	39.40 ± 0.43	1956 ± 62	830 ± 25	1.75 ± 1.42
[O I] 6300	39.02 ± 0.38	303 ± 62	128 ± 25	0.73 ± 0.45
H α Narrow	40.65 ± 0.02	303 ± 62	128 ± 25	30.82 ± 0.55
Hα Broad	41.06 ± 0.02	2408 ± 95	1061 ± 44	80.69 ± 2.20
[N II] 6585	40.43 ± 0.02	303 ± 62	128 ± 25	18.70 ± 0.55
[S II] 6718	40.01 ± 0.06	303 ± 62	128 ± 25	7.12 ± 0.70
[S II] 6732	39.88 ± 0.09	303 ± 62	128 ± 25	5.27 ± 0.79

Emission Summary

H α broad SNR	3.56
H β broad SNR	1.46
H γ broad SNR	0.43
AGN frac	0.23
Host frac	0.77
$\log L_{5100, \text{Host}}$	43.40
Fe II/H β	1.03
Fe II/[O III]	1.27

Quality Flags

spurious_hab/hbb	0/0
15100	1
balmer	1
balmer_snr	2
hb_width	0
balmer_width	0