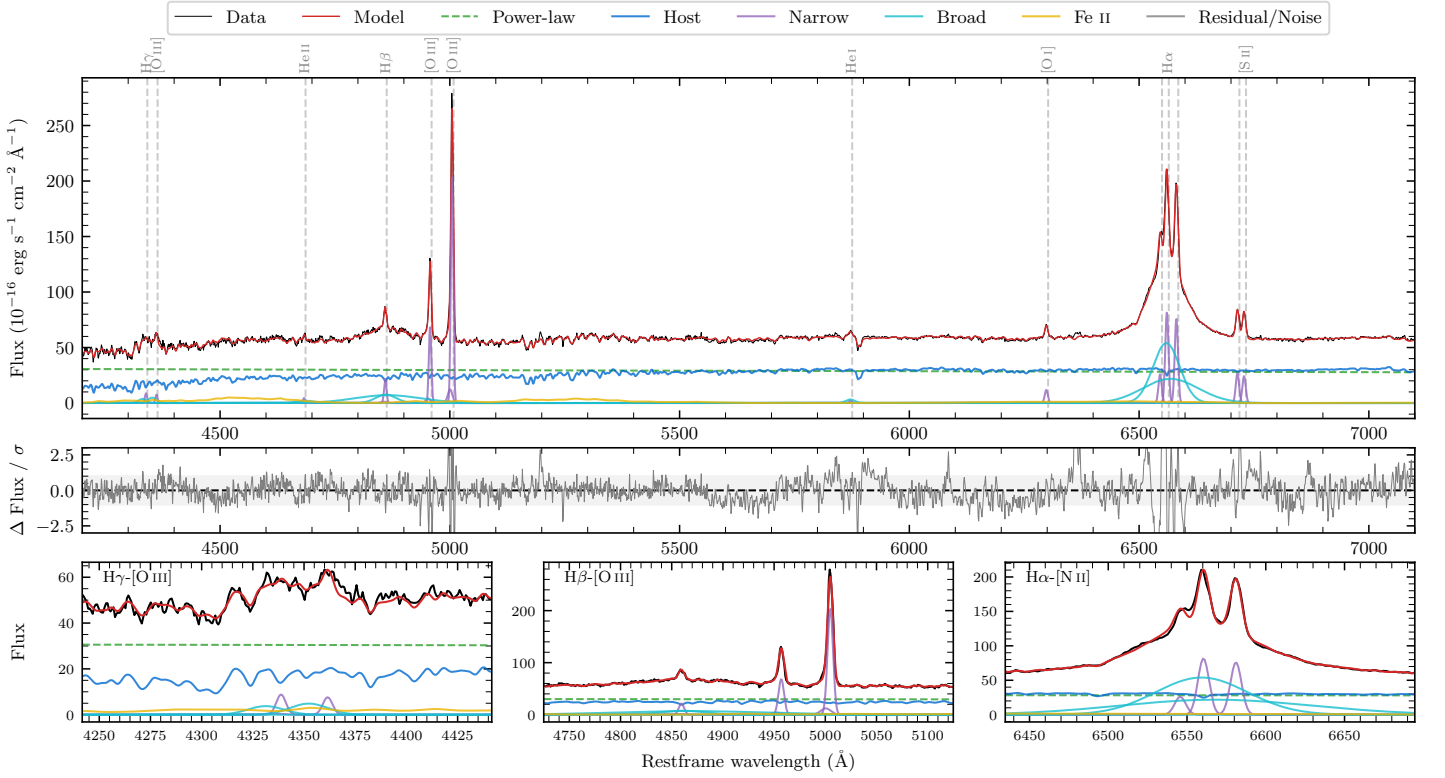
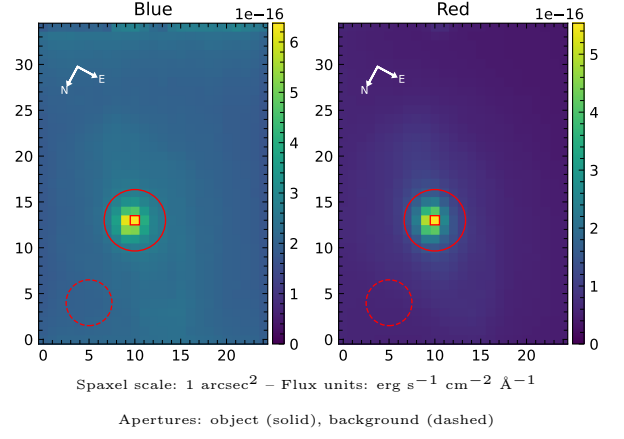


NGC 6860

Spectrum ID	485673774_sp5	Spectrum type	Sy 1.5
Alt name	g2008469-610560	Quality flag	good
z	0.0146	AGN reference	6dFGS
RA, Dec	302.1954, -61.0999	MW $E(B - V)$	0.036
MJD	59501.41	Power law α_ν	-1.81 ± 0.09
SNR/ \AA B/R	23.3/51.8	$\log L_{5100, \text{AGN}}$	42.90 ± 0.01
Obs airmass	1.18	$\log H\beta_{\text{Br}}/[\text{O III}]$	0.05 ± 0.02
SMSS ID	485673774	$\log M_{L5100}/M_\odot$	7.89 ± 0.09
Neighbour	None $< 15''$	$\log M_{\text{H}\alpha}/M_\odot$	7.39 ± 0.02
SMSS $\langle r_6'' \text{ ap} \rangle$	14.28 ± 0.06	$\log M_{\text{H}\beta}/M_\odot$	7.82 ± 0.10
2MASS K_{ext}	9.39 ± 0.02	$\log M_{[\text{O III}]} / M_\odot$	7.93 ± 0.10



Emission Line Measurements

Line	$\log L$ (erg s ⁻¹)	FWHM (km s ⁻¹)	σ (km s ⁻¹)	EW (Å)
H γ Narrow	39.48 ± 0.11	394 ± 63	198 ± 28	1.91 ± 0.32
Hγ Broad	40.09 ± 0.12	2685 ± 520	904 ± 168	6.40 ± 0.54
[O III] 4364	39.38 ± 0.15	382 ± 63	161 ± 25	1.50 ± 0.25
He II Narrow	39.19 ± 0.15	382 ± 63	161 ± 25	0.97 ± 0.20
He II Broad	39.80 ± 0.23	2684 ± 1094	1140 ± 464	3.33 ± 0.52
H β Narrow	39.92 ± 0.03	394 ± 63	198 ± 28	5.35 ± 0.25
Hβ Broad	40.96 ± 0.02	5382 ± 555	3066 ± 97	57.57 ± 1.02
[O III] 5007	40.91 ± 0.01	394 ± 63	198 ± 28	52.39 ± 0.27
He I Narrow	38.96 ± 0.18	382 ± 63	161 ± 25	0.60 ± 0.11
He I Broad	39.63 ± 0.07	1184 ± 63	503 ± 25	2.82 ± 0.20
[O I] 6300	39.73 ± 0.02	382 ± 63	161 ± 25	3.60 ± 0.12
H α Narrow	40.59 ± 0.01	382 ± 63	161 ± 25	26.07 ± 0.15
Hα Broad	41.59 ± 0.01	3695 ± 75	1640 ± 33	262.15 ± 0.53
[N II] 6585	40.56 ± 0.01	382 ± 63	161 ± 25	24.35 ± 0.15
[S II] 6718	40.12 ± 0.01	382 ± 63	161 ± 25	8.83 ± 0.12
[S II] 6732	40.07 ± 0.01	382 ± 63	161 ± 25	7.98 ± 0.13

Emission Summary

H α broad SNR	31.69
H β broad SNR	6.00
H γ broad SNR	2.43
AGN frac	0.55
Host frac	0.45
$\log L_{5100, \text{Host}}$	42.81
Fe II/H β	0.64
Fe II/[O III]	0.71

Quality Flags

spurious_hab/hbb	0/0
15100	0
balmer	0
balmer_snr	1
hb_width	1
balmer_width	0