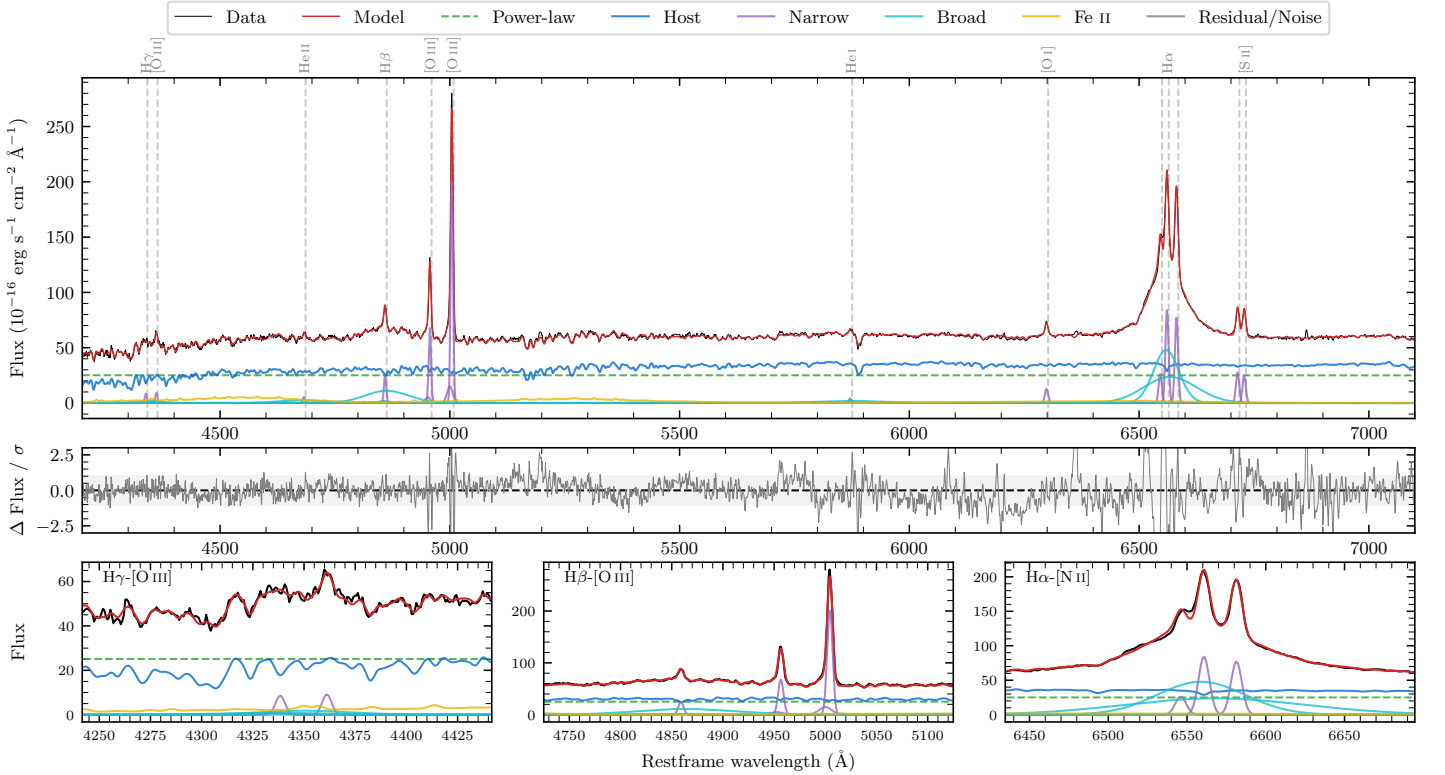
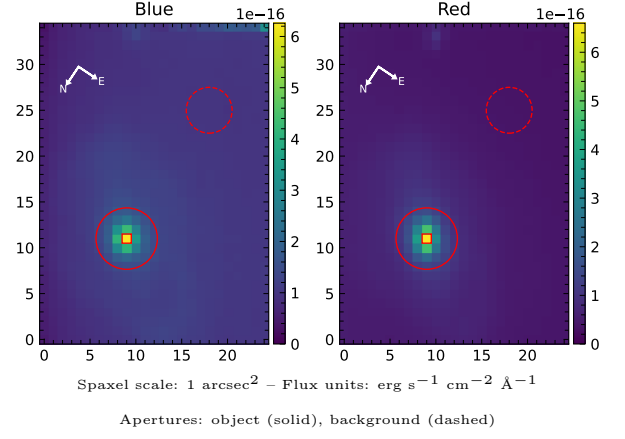


NGC 6860

Spectrum ID	485673774_sp4	Spectrum type	Sy 1.5
Alt name	g2008469-610560	Quality flag	good
z	0.0146	AGN reference	6dFGS
RA, Dec	302.1954, -61.0999	MW $E(B - V)$	0.036
MJD	59500.41	Power law α_ν	-1.99 ± 0.01
SNR/ \AA B/R	26.3/59.5	$\log L_{5100, \text{AGN}}$	42.83 ± 0.01
Obs airmass	1.17	$\log H\beta_{\text{Br}}/[\text{O III}]$	-0.06 ± 0.01
SMSS ID	485673774	$\log M_{L5100}/M_\odot$	8.00 ± 0.06
Neighbour	None $< 15''$	$\log M_{\text{H}\alpha}/M_\odot$	7.35 ± 0.02
SMSS $\langle r_6'' \text{ap} \rangle$	14.28 ± 0.06	$\log M_{\text{H}\beta}/M_\odot$	7.92 ± 0.07
2MASS K_{ext}	9.39 ± 0.02	$\log M_{[\text{O III}]} / M_\odot$	8.07 ± 0.06



Emission Line Measurements

Line	$\log L$ (erg s^{-1})	FWHM (km s^{-1})	σ (km s^{-1})	EW (\AA)
H γ Narrow	39.49 ± 0.10	389 ± 62	226 ± 26	2.33 ± 0.40
Hγ Broad	39.95 ± 0.12	3912 ± 351	1498 ± 113	6.41 ± 0.90
[O III] 4364	39.45 ± 0.10	375 ± 62	159 ± 25	2.13 ± 0.27
He II Narrow	39.25 ± 0.11	375 ± 62	159 ± 25	1.35 ± 0.21
He II Broad	40.26 ± 0.06	8312 ± 140	3530 ± 59	13.71 ± 1.01
H β Narrow	40.00 ± 0.03	389 ± 62	226 ± 26	7.59 ± 0.31
Hβ Broad	40.87 ± 0.01	6299 ± 358	2470 ± 53	55.80 ± 0.91
[O III] 5007	40.92 ± 0.01	389 ± 62	226 ± 26	63.66 ± 0.32
He I Narrow	39.24 ± 0.06	375 ± 62	159 ± 25	1.33 ± 0.12
He I Broad	40.28 ± 0.04	9103 ± 98	3865 ± 41	14.65 ± 0.66
[O I] 6300	39.76 ± 0.02	375 ± 62	159 ± 25	4.35 ± 0.12
H α Narrow	40.59 ± 0.01	375 ± 62	159 ± 25	29.77 ± 0.15
Hα Broad	41.55 ± 0.01	3635 ± 66	1600 ± 25	272.38 ± 0.52
[N II] 6585	40.56 ± 0.01	375 ± 62	159 ± 25	27.34 ± 0.15
[S II] 6718	40.12 ± 0.01	375 ± 62	159 ± 25	10.05 ± 0.12
[S II] 6732	40.07 ± 0.01	375 ± 62	159 ± 25	9.03 ± 0.13

Emission Summary

H α broad SNR	32.74
H β broad SNR	5.75
H γ broad SNR	1.27
AGN frac	0.46
Host frac	0.54
$\log L_{5100, \text{Host}}$	42.90
Fe II/H β	0.97
Fe II/[O III]	0.85

Quality Flags

spurious_hab/hbb	0/0
15100	1
balmer	0
balmer_snr	1
hb_width	0
balmer_width	0