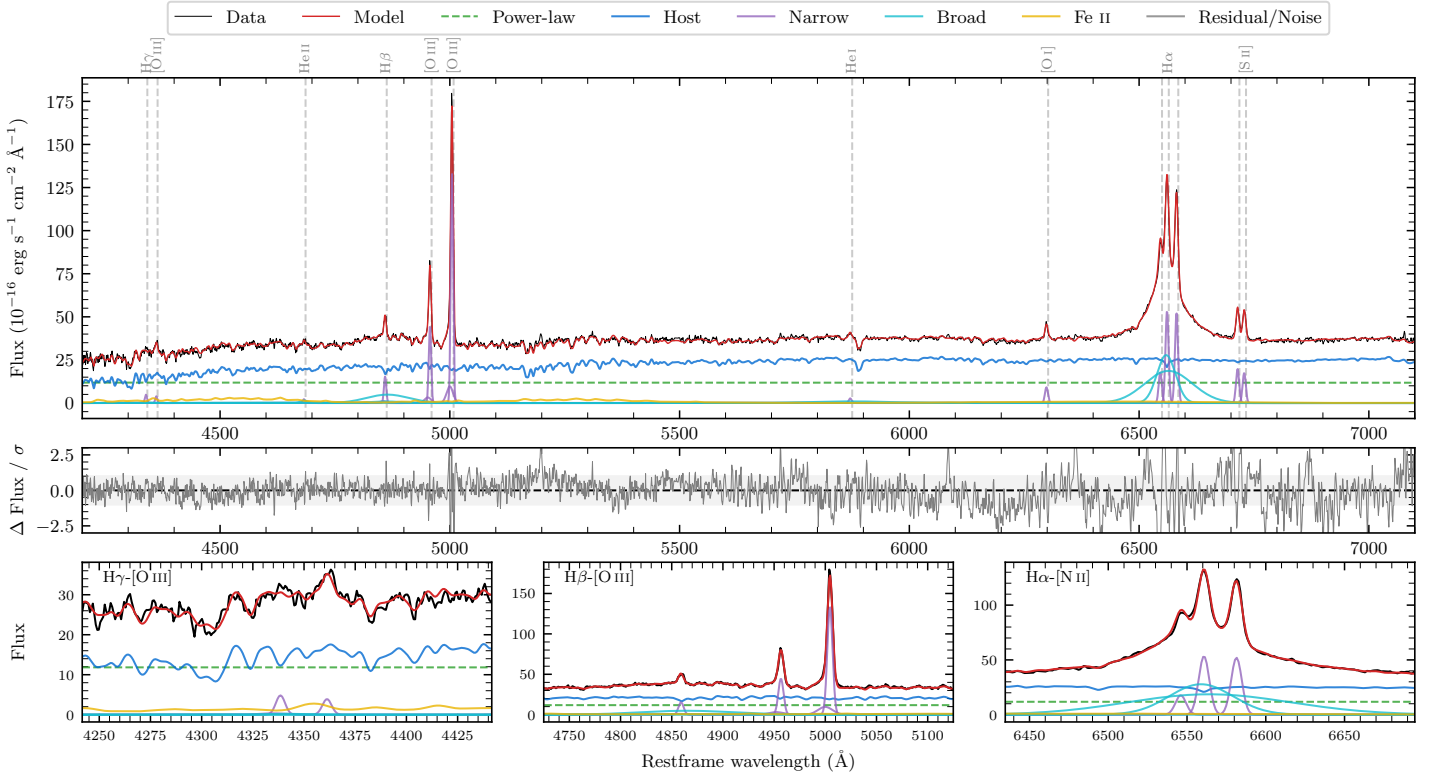
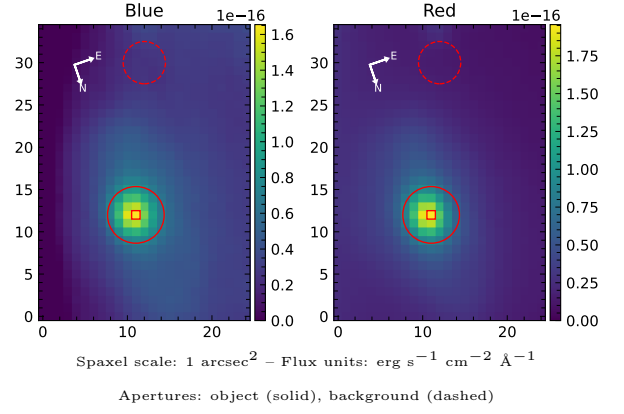


# NGC 6860

Spectrum ID	485673774_sp2	Spectrum type	Sy 1.5
Alt name	g2008469-610560	Quality flag	good
$z$	0.0146	AGN reference	6dFGS
RA, Dec	302.1954, -61.0999	MW $E(B - V)$	0.036
MJD	59486.53	Power law $\alpha_\nu$	$-1.99 \pm 0.01$
SNR/ $\text{\AA}$ B/R	20.3/52.5	$\log L_{5100, \text{AGN}}$	$42.50 \pm 0.02$
Obs airmass	1.35	$\log H\beta_{\text{Br}}/[\text{O III}]$	$-0.21 \pm 0.02$
SMSS ID	485673774	$\log M_{L5100}/M_\odot$	$7.87 \pm 0.05$
Neighbour	None $< 15''$	$\log M_{\text{H}\alpha}/M_\odot$	$7.02 \pm 0.03$
SMSS $\langle r_6'' \text{ap} \rangle$	$14.28 \pm 0.06$	$\log M_{\text{H}\beta}/M_\odot$	$7.78 \pm 0.06$
2MASS $K_{\text{ext}}$	$9.39 \pm 0.02$	$\log M_{[\text{O III}]} / M_\odot$	$8.00 \pm 0.05$



## Emission Line Measurements

Line	$\log L$ (erg s $^{-1}$ )	FWHM (km s $^{-1}$ )	$\sigma$ (km s $^{-1}$ )	EW ( $\text{\AA}$ )
H $\gamma$ Narrow	$39.24 \pm 0.14$	$379 \pm 62$	$245 \pm 26$	$2.78 \pm 0.70$
<b>H<math>\gamma</math> Broad</b>	—	—	—	—
[O III] 4364	$39.07 \pm 0.17$	$365 \pm 62$	$154 \pm 25$	$1.89 \pm 0.43$
He II Narrow	$38.86 \pm 0.27$	$365 \pm 62$	$154 \pm 25$	$1.16 \pm 0.34$
<b>He II Broad</b>	<b><math>39.20 \pm 0.23</math></b>	<b><math>1179 \pm 62</math></b>	<b><math>500 \pm 25</math></b>	<b><math>2.54 \pm 0.60</math></b>
H $\beta$ Narrow	$39.79 \pm 0.03$	$379 \pm 62$	$245 \pm 26$	$9.91 \pm 0.51$
<b>H<math>\beta</math> Broad</b>	<b><math>40.54 \pm 0.02</math></b>	<b><math>6385 \pm 234</math></b>	<b><math>2398 \pm 66</math></b>	<b><math>55.07 \pm 1.40</math></b>
[O III] 5007	$40.74 \pm 0.01$	$379 \pm 62$	$245 \pm 26$	$88.51 \pm 0.52$
He I Narrow	$39.04 \pm 0.07$	$365 \pm 62$	$154 \pm 25$	$1.77 \pm 0.17$
<b>He I Broad</b>	<b><math>40.04 \pm 0.05</math></b>	<b><math>10316 \pm 64</math></b>	<b><math>4381 \pm 26</math></b>	<b><math>17.86 \pm 1.16</math></b>
[O I] 6300	$39.60 \pm 0.02$	$365 \pm 62$	$154 \pm 25$	$6.44 \pm 0.17$
H $\alpha$ Narrow	$40.38 \pm 0.01$	$365 \pm 62$	$154 \pm 25$	$38.98 \pm 0.21$
<b>H<math>\alpha</math> Broad</b>	<b><math>41.31 \pm 0.01</math></b>	<b><math>2943 \pm 66</math></b>	<b><math>1520 \pm 25</math></b>	<b><math>329.91 \pm 0.72</math></b>
[N II] 6585	$40.37 \pm 0.01$	$365 \pm 62$	$154 \pm 25$	$38.09 \pm 0.20$
[S II] 6718	$39.96 \pm 0.01$	$365 \pm 62$	$154 \pm 25$	$14.73 \pm 0.18$
[S II] 6732	$39.91 \pm 0.01$	$365 \pm 62$	$154 \pm 25$	$13.06 \pm 0.18$

## Emission Summary

H $\alpha$ broad SNR	28.09
H $\beta$ broad SNR	3.53
H $\gamma$ broad SNR	0.00
AGN frac	0.37
Host frac	0.63
$\log L_{5100, \text{Host}}$	42.74
Fe II/H $\beta$	1.13
Fe II/[O III]	0.70

## Quality Flags

spurious_hab/hbb	0/0
15100	1
balmer	0
balmer_snr	2
hb_width	0
balmer_width	1